



SERVICE MANUAL

TYPE: PS210P

PS210P

WEB ACCESS: <http://www.yorkville.com>

WORLD HEADQUARTERS CANADA

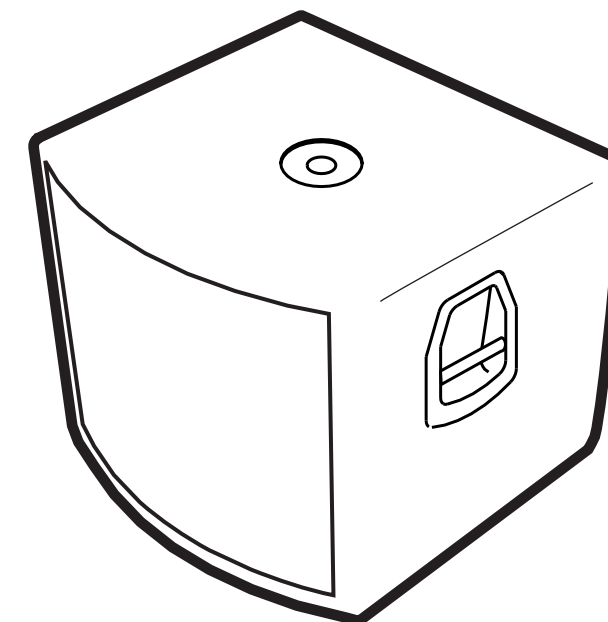
Yorkville Sound
550 Granite Court
Pickering, Ontario
L1W-3Y8 CANADA

Voice: (905) 837-8481
Fax: (905) 837-8746

U.S.A.

Yorkville Sound Inc.
4625 Witmer Industrial Estate
Niagara Falls, New York
14305 USA

Voice: (716) 297-2920
Fax: (716) 297-3689



Quality and Innovation Since 1963
Printed in Canada

IMPORTANT SAFETY INSTRUCTIONS



INSTRUCTIONS PERTAINING TO A RISK OF FIRE, ELECTRIC SHOCK, OR INJURY TO PERSONS.

INSTRUCTIONS RELATIVES AU RISQUE DE FEU, CHOC ÉLECTRIQUE, OU BLESSURES AUX PERSONNES.

CAUTION:

TO REDUCE THE RISK OF ELECTRIC SHOCK, DO NOT REMOVE COVER (OR BACK). NO USER SERVICEABLE PARTS INSIDE.

REFER SERVICING TO QUALIFIED SERVICE PERSONNEL.

AVIS:

AFIN DE REDUIRE LES RISQUE DE CHOC ELECTRIQUE, N'ENLEVEZ PAS LE COUVERT (OU LE PANNEAU ARRIERE). NE CONTIENT AUCUNE PIECE REPARABLE PAR L'UTILISATEUR.

CONSULTEZ UN TECHNICIEN QUALIFIE POUR L'ENTRETIEN.

Read Instructions:

The *Owner's Manual* should be read and understood before operation of your unit. Please, save these instructions for future reference.

Packaging:

Keep the box and packaging materials, in case the unit needs to be returned for service.

Warning:

When using electric products, basic precautions should always be followed, including the following:

Power Sources:

Your unit should be connected to a power source only of the voltage specified in the owners manual or as marked on the unit. This unit has a polarized plug. Do not use with an extension cord or receptacle unless the plug can be fully inserted. Precautions should be taken so that the grounding scheme on the unit is not defeated.

Hazards:

Do not place this product on an unstable cart, stand, tripod, bracket or table. The product may fall, causing serious personal injury and serious damage to the product. Use only with cart, stand, tripod, bracket, or table recommended by the manufacturer or sold with the product. Follow the manufacturer's instructions when installing the product and use mounting accessories recommended by the manufacturer.

The apparatus should not be exposed to dripping or splashing water; no objects filled with liquids should be placed on the apparatus.

Terminals marked with the "lightning bolt" are hazardous live; the external wiring connected to these terminals require installation by an instructed person or the use of ready made leads or cords.

No naked flame sources, such as lighted candles, should be placed on the apparatus.

Power Cord:

The AC supply cord should be routed so that it is unlikely that it will be damaged. If the AC supply cord is damaged **DO NOT OPERATE THE UNIT.**

Service:

The unit should be serviced only by qualified service personnel.

Veillez lire le manuel:

Il contient des informations qui devraient étre comprises avant l'opération de votre appareil. Conservez S.V.P. ces instructions pour consultations ultérieures

Emballage:

Conservez la boîte au cas ou l'appareil devait étre retourner pour réparation.

Attention:

Lors de l'utilisation de produits électrique, assurez-vous d'adhérer à des précautions de bases incluant celle qui suivent:

Alimentation:

L'appareil ne doit étre branché qu'à une source d'alimentation correspondant au voltage spécifié dans le manuel ou tel qu'indiqué sur l'appareil. Cet appareil est équipé d'une prise d'alimentation polarisée. Ne pas utiliser cet appareil avec un cordon de raccordement à moins qu'il soit possible d'insérer complètement les trois lames. Des précautions doivent étre prises afin d'éviter que le système de mise à la terre de l'appareil ne soit désengagé.

Risque:

Ne pas placer cet appareil sur un chariot, un support, un trépied ou une table instables. L'appareil pourrait tomber et blesser quelqu'un ou subir des dommages importants. Utiliser seulement un chariot, un support, un trépied ou une table recommandés par le fabricant ou vendus avec le produit. Suivre les instructions du fabricant pour installer l'appareil et utiliser les accessoires recommandés par le fabricant.

Il convient de ne pas placer sur l'appareil de sources de flammes nues, telles que des bougies allumées.

L'appareil ne doit pas étre exposé à des égouttements d'eau ou des éclaboussures et qu'aucun objet rempli de liquide tel que des vases ne doit étre placé sur l'appareil.

Les dispositifs marqués d'une symbole "d'éclair" sont des parties dangereuses au toucher et que les câblages extérieurs connectés à ces dispositifs de connection extérieure doivent étre effectués par un opérateur formé ou en utilisant des cordons déjà préparés.

Cordon d'alimentation:

Évitez d'endommager le cordon d'alimentation. **N'UTILISEZ PAS L'APPAREIL** si le cordon d'alimentation est endommagé.

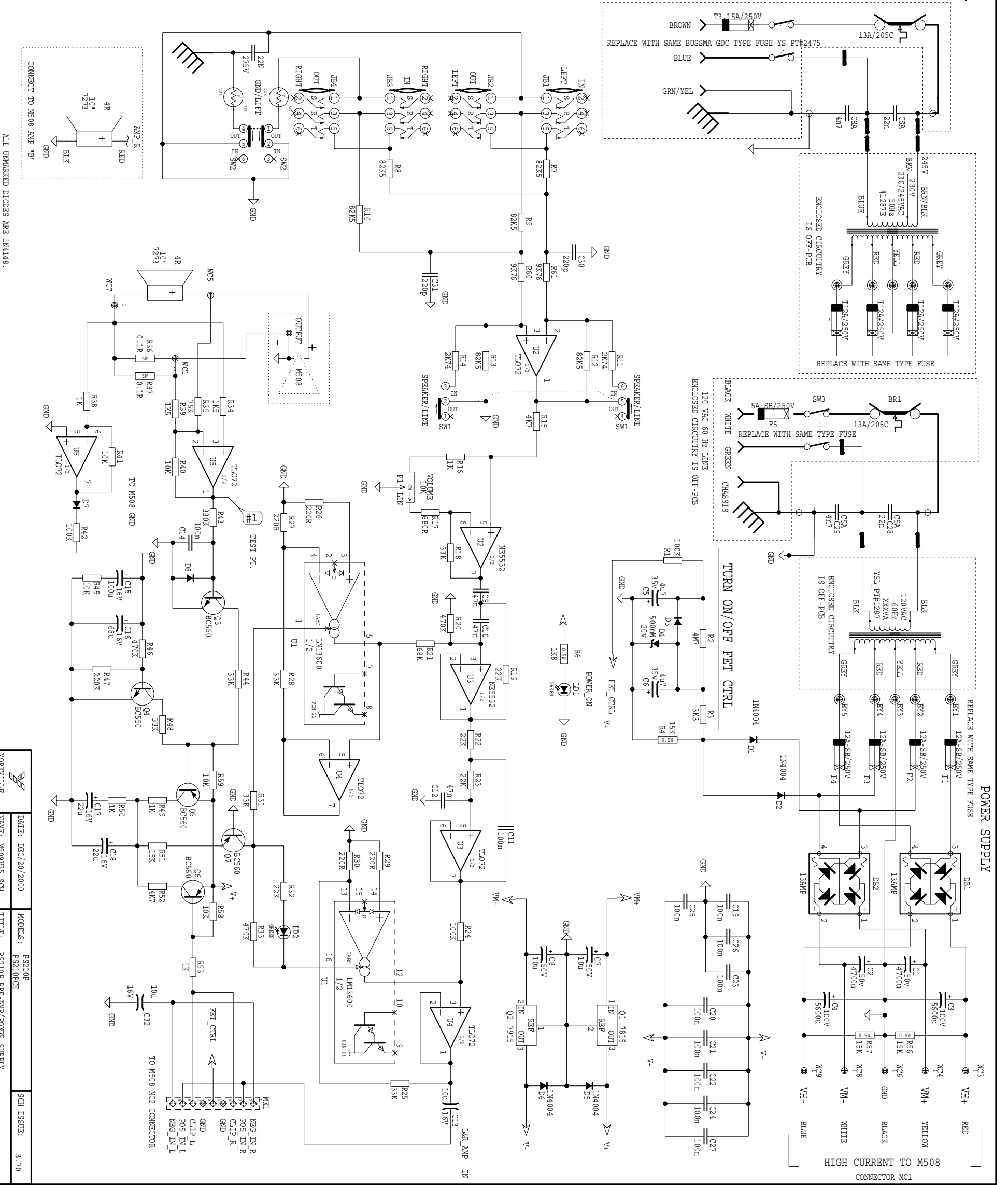
Service:

Consultez un technicien qualifié pour l'entretien de votre appareil.

PS210P Parts List 1/18/2005

YS #	Description	Qty.	YS #	Description	Qty.	YS #	Description	Qty.
6405	RED 3MM LED 1V7 5MA BRT	2	8245	PULSE SMALL LEXAN LABEL	1	8657	6-32 X 3/8" HEX SPACER ALUMINUM	4
6410	GRN 3MM LED 1V7 5MA CLEAR BRT	2	8242	"Y" LOGO PULSE SERIES SMALL	1	7273	10" 4R 300WPGM SPEAKER	2
6419	BRIDGE 35A 400V WIRE LEAD G13504	2	3521	SIDE ENTRY PCB CONN. 156 8POS	1	8818	3/4 OD X 3/8 ID X .080 THICK WASHER	1
6425	BAV21 200V 0A25 DIODE T&R	8	3607	SIDE ENTRY PCB CONN. 9 POS.	1	3511	#6 FLAT WASHER NYLON	2
6825	1N4148 75V 0A45 DIODE T&R	23	3674	9 CIR CABLE HOLDER .098	1	8485	#6 SPLIT WASHER ZINC	2
6438	1N4007 400V 1A0 DIODE T&R	16	8701	4-40 KEPS NUT ZINC	2	8820	#8 FLAT WASHER JS500	4
6479	MUR415 150V 4A0 DIODE FASREC	12	8800	6-32 KEPS NUT ZINC	14	8473	#10 BLACK CUPWASHER SWF-10BK	1
5121	MZ4615RL 2V0 W25 ZENER 5% T&R	2	8797	5/16-18 KEPS NUT JS500	1	3436	DPDT PUSH SW PCMT H BREAK B4 MAKE	2
6440	1N750ARL 4V7 0W5 ZENER 5% T&R	4	4597	22AWG STRAN TC WIR JMP	6	3585	DPDT ROKR SW QUIK 250" AC/PWR IEC65	1
6461	1N5240BRL 10V0 0W5 ZENER 5% T&R	6	4599	22AWG SOLID SC WIR T&R JMP	21	3399	THERMO/BRKR:N/CLOSED OPEN@96C	1
6450	1N5242B 12V0 0W5 ZENER 5% T&R	2	5299	24AWG SOLID SC WIR RAD JMP	22	8468	VELCRO STRAP 3/4"X22CM (VELSTRAP)	1
6465	1N5250B 20V0 0W5 ZENER 5% T&R	1	4745	5.0W 0R1 5% BLK RES	6	1287	PPW/EPW 120VAC 60HZ T'RD	1
6856	NJM7815FA TO220 P 15V0 REG IS V1	1	4688	1/2W 2R2 5% T&R RES	4			
6857	NJM7915FA TO220 N 15V0 REG IS V2	1	4748	2.0W 3R9 5% T&R	4			
5101	BC550C TO92 NPN TRAN T&R TB	10	4675	1/2W 10R 5% T&R RES	2			
5102	BC560C TO92 PNP TRANSISTOR T&R TB	5	2013	1/8W 22R1 1%FLAME PROOF T&R RES	2			
5109	MPSA43 TO92 NPN TRAN TA	10	2019	1/8W 100R0 1%FLAME PROOF T&R RES	2			
5114	MPSA92 TO92 PNP TRAN T&R TA	14	4921	1/4W 100R 5% .2"U T&R RES	6			
5119	2N5638 TO92 NCH JFET T&R TC	4	4909	1/4W 200R 5% T&R RES	2			
6928	IRFP250 TO247 NCH MFET TM	6	4932	1/4W 200R 5% .2"U T&R RES	8			
6991	MJL21193 TO3P PNP TRAN TK	2	4857	1/4W 220R 5% T&R RES	4			
6882	TL072CP IC FET DUAL OP AMP	3	2024	1/8W 249R 2%FLAME PROOF T&R RES	4			
6884	NE5532N IC DUAL OP AMP	1	2025	1/8W 274R 1%FLAME PROOF T&R RES	4			
6745	LM13600N IC XCONDUCTANCE AMP	1	2028	1/8W 475R 1%FLAME PROOF T&R RES	4			
6470	MAC15A6FP TO220 15A TRIAC 400V	2	4933	1/4W 470R 5% .2"U T&R RES	2			
6472	4K7 3% 0W0 THERMISTOR	2	2030	1/8W 681R 1%FLAME PROOF T&R RES	2			
6473	68K 3% 0W0 THERMISTOR	4	4923	1/4W 680R 5% .2"U T&R RES	3			
6482	115R 20% 0W0 PTC THERMISTOR	2	4758	1/4W 953R 1% T&R RES	8			
5405	.27P 200V 5%CAP T&R RAD CER.2"NPO	2	4823	1/4W 1K 5% T&R RES	4			
5199	100P 100V 2%CAP T&R RAD CER.2"NPO	4	4934	1/4W 1K 5% .2"U T&R RES	1			
5197	220P 100V 2%CAP T&R RAD CER.2"NPO	2	4824	1/4W 1K5 5% T&R RES	3			
5201	470P 100V 5%CAP T&R RAD CER.2"NPO	10	4936	1/4W 2K7 5% .2"U T&R RES	10			
5816	680P 100V 5%CAP T&R RAD CER.2"NPO	2	4764	1/4W 2K740 0.1% *** T&R RES	2			
5275	.3N3 100V 5%CAP T&R RAD .2"FLM	6	4826	1/4W 3K3 5% T&R RES	1			
5209	.4N7 250V 5%CAP T&R RAD .2"FLM	2	4827	1/4W 4K7 5% T&R RES	1			
6451	.4N7 250V 20%CAP BLK 'Y' 10MM AC	1	4943	1/4W 4K7 5% .2"U T&R RES	5			
5840	.22N 400V 10%CAP BLK RAD POLY FLM	1	4939	1/4W 5K1 5% .2"U T&R RES	2			
6435	.22N 275V 20%CAP BLK 'X2' 15MM AC	1	4685	1.0W 5K6 5% T&R RES	2			
5224	.47N 100V 10%CAP T&R RAD .2"FLM	3	4862	1/4W 5K6 5% T&R RES	8			
5228	100N 100V 5%CAP T&R RAD .2"FLM	15	4762	1/4W 9K760 0.1% *** T&R RES	2			
5231	220N 63V 10%CAP T&R RAD .2"FLM	7	4829	1/4W 10K 5% T&R RES	5			
5318	220N 50V 10%CAP T&R BEAD X7R	1	4940	1/4W 10K 5% .2"U T&R RES	8			
5259	.4U7 63V 20%CAP T&R RAD .2"EL	2	4630	1/2W 15K 5% T&R RES	3			
5281	.10U 16V 20%CAP T&R RAD .2"NP	4	4830	1/4W 15K 5% T&R RES	1			
5945	.10U 63V 20%CAP T&R RAD .2"EL	2	4832	1/4W 22K 5% T&R RES	6			
5260	.22U 50V 20%CAP T&R RAD .2"EL	6	4941	1/4W 30K 5% .2"U T&R RES	8			
5961	.33U 16V 20%CAP T&R RAD .2"NP	6	4917	1/4W 31K6 1% T&R RES	6			
5265	.68U 25V 20%CAP T&R RAD .2"EL	5	4840	1/4W 33K 5% T&R RES	4			
5267	100U 25V 20%CAP T&R RAD .2"EL	1	4947	1/4W 33K 5% .2"U T&R RES	2			
5914	100U 63V 20%CAP BLK 10X13MM EL	2	4878	1/4W 43K 5% T&R RES	2			
5621	470U 63V 20%CAP BLK 12X25MM EL	4	4835	1/4W 56K 5% T&R RES	2			
5859	4700U 50V 20%CAP BLK 25X36MM ELS	2	4836	1/4W 68K 5% T&R RES	1			
5890	5600U 100V 20%CAP RAD 35X50MM ELS	4	4760	1/4W 75K 5% T&R RES	1			
4403	.10K 5B LIN 16MM P14	1	4772	1/4W 82K5 1% T&R RES	6			
3819	.5UH COIL 18AWG R000 AIR CORE	2	4838	1/4W 100K 5% T&R RES	3			
3464	WIRE TO BOARD CRIMP 18-24 AWGT/LEAD	13	4841	1/4W 220K 5% T&R RES	5			
3489	CLIP 250X032 18-22AWG DISCO/INSL	1	4842	1/4W 330K 5% T&R RES	1			
3490	CLIP 250X032 14-16AWG DISCO/INSL	6	4843	1/4W 470K 5% T&R RES	3			
3491	CLIP 205/187X020 18-22AWG DISCO/INS	4	4844	1/4W 1M 5% T&R RES	4			
3601	RING TERMINAL 16AWG WIRE & #8 SCREW	1	4888	1/4W 4M7 5% T&R RES	1			
3682	250 MALE PCB TAB REEL	10	3608	10" 9C-24AWG RIBBON HITMP 0.1"	1			
3498	1/4" JCK PCB MT HORZ	4	8742	4-40 X 3/8 PAN PH TAPTITE JS500	16			
3451	EYELET SMALL 0.089 OD PLATED	37	8861	4-40 X 3/8 PAN PH MS JS500	2			
3412	LOWPROFILE FUSEHOLDER FOR .25X1.25	1	8799	#6 X 1/4 PAN PH TYPE B JS500	1			
3414	INTERNATIONAL PC MOUNT FUSEHOLDER	8	8832	6-32 X 1/4 PAN PH TAPTITE JS500	2			
2427	5.0 AMP SLO-BLO .25X1.25 FUSE	1	8801	6-32 X 3/8 PAN PH TAPTITE JS500	2			
2438	12.0 AMP SLO-BLO .25X1.25 FUSE	4	8823	6-32 X 1 PAN PH TAPTITE JS500	8			
8537	TEARDROP HANDLE 'YORKVILLE' BLUE	2	8998	6-32 X 1 FLAT PH MS ZINC CLEAR	4			
8604	10-32 T NUT	8	8803	8-32 X 3/8 PAN QUAD TAPTITE JS500	4			
3501	B52200F006 COMP WASH #4 SMALL	2	8785	#8 X 3/4 OVAL PH TYPE A BLACK OXIDE	1			
3556	XSISTOR HOLD SPRING-BAR (PLATED)	4	8815	8-32 X 3/4 PAN PH TAPTITE JS500	6			
3800	BELLY BUTTON #BB1 CORDS CANADA	8	8875	#8 X 1 1/2 PAN PH TYPE A JS500	4			
3862	SIL PAD 400 1.5X6.75	2	8749	10-32 X 1/2 QDX PH TAPTITE JS500	2			
3795	#8 GROUND LUG ZIERICH 505-169	1	8781	#10 X 7/8 FLAT PHIL TYPE A JS500BLK	22			
3803	NYLON SECUR-A-TACH MINI PLASTIC TIE	1	8727	#10 X 1" PAN PH TYPE A JS500 BLACK	16			
3810	4" NYLON CABLE TIE	11	8862	#10 X 1 1/2 PAN PH TYPE A JS500	8			
8661	BUTTON KNOB FLAT GREY	2	8751	10-32 X 2 PAN PH MS JS500	8			
8693	S ROTARY KNOB GREY	2	8777	#14 X 1FLAT PH TYPE A JS500 M6 HEAD	4			
3468	8' 3/16 SJT AC LINE CORD STRIP 17"	1	8740	5/16-18 X 3 GRD 5 HEX BOLT JS500	1			
3821	HEYCO #1200 STRAIN RELIEF	1	3741	.5 SPACER ID-.171 OD-.25 #912-500	6			

M509V37.PRN



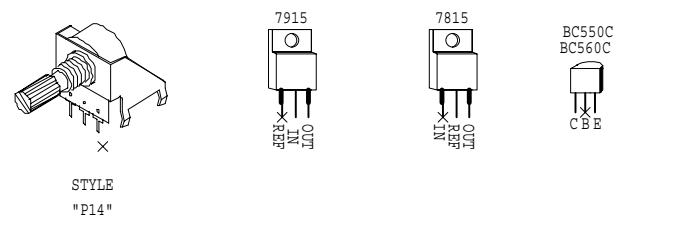
CONNECT TO M508 AMP "B"
ALL UNMARKED DIODES ARE 1N4148.

YORKVILLE	DATE: DEC/20/2000	MODELS: PS210P	SCH ISSUES: 3.70
	NAME: M509V35.SCH	PS210PCE	
		TITLE: PS210P_PRE-AMP/POWER_SUPPLY	

M509.SCH DATABASE HISTORY

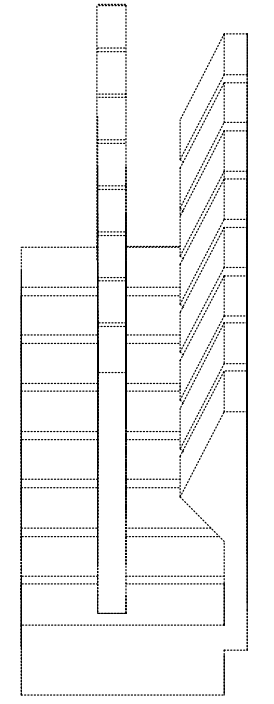
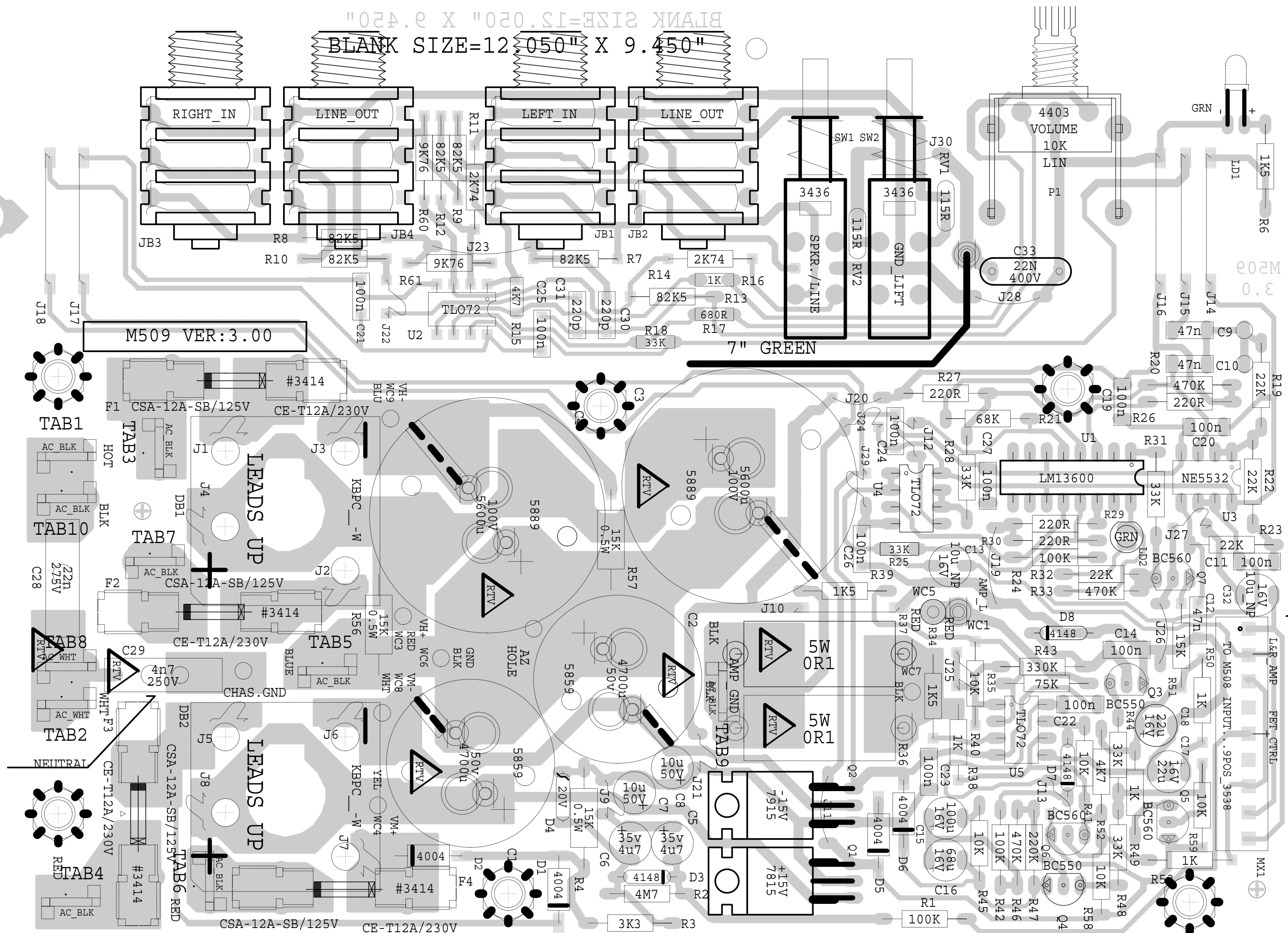
#	DATE	VER#	DESCRIPTION OF CHANGE
1	SEP/22/95		.PC#4881 UPDATE POWER SUPPLY
2	APR/03/96		.PC#5079 R16 2K7 TO 1K
3	MAR/26/97		PC#5340 U3 TL072-->NE5532
4	MAY/12/98	3.10	REDONE FOR PS210P
5	AUG/06/98	3.20	PC#5785 PRIMARY FUSE_CE_T5A->T2,5A
6			NA 8A-SB->5A-SB
7	SEP/15/98	3.30	REPLACE FUSE SYMBOLS
8	OCT/27/98	3.40	PC#5867 R51 33K->15K
9	JAN/25/99	3.50	CE XFMR WIRE COLOURS UPDATED
10	OCT/07/99	3.60	PC#6109 GRND_LIFT_SW_REDONE
11		3.70	
12		V	

PRODUCTION NOTES

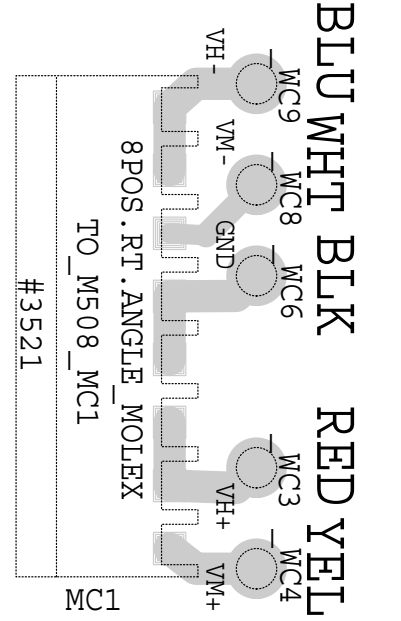




BLANK SIZE=12.050" X 9.450"



9 PIN MOLEX



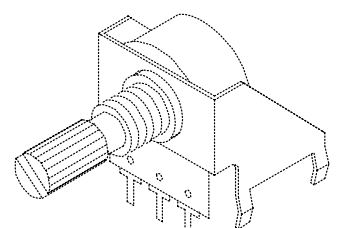
BLU WHT BLK RED YEL

MODEL(S) :- PS210P

#	DATE	VER#	DESCRIPTION OF CHANGE
1	JUN/26/95	2.20	PC#4832 REPLACE EYELETS FOR XFMR SECONDARY WIRES WITH TABS
2			
3	APR/03/96	2.21	PC#5079 RI6 2K7-->1K
4	MAR/26/97	2.22	PC#5340 U3 TL072-->NE5532
5	OCT/27/98	2.23	PC#5867 R5I 33K->15K
6	OCT/06/99	3.00	PC#5759 EYELETS FOR CAPS
7			PC#6130 MOVED R2 FROM R3
8			PC#6109 REDO GRND_LIFT_SWITCH
9			ADD_C33
10			

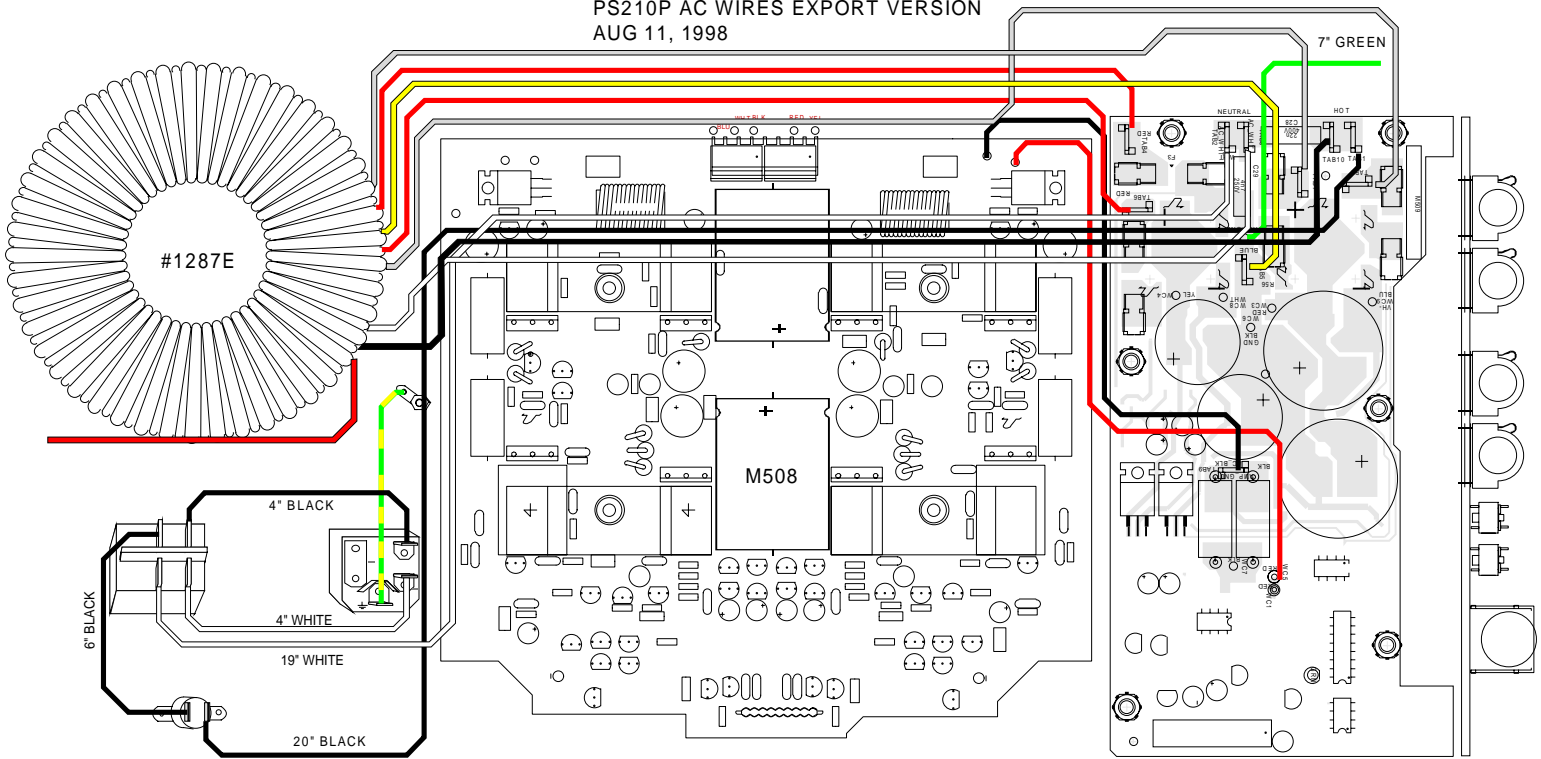
M509.PCB POT LIST

REF	FUNCTION	PART#	KNOB	AS OF
P1	VOLUME	#4403	#8693	DEC/99
R	F	P	K	N
R	F	P	K	N
R	F	P	K	N
R	F	P	K	N
R	F	P	K	N



STYLE "P14"

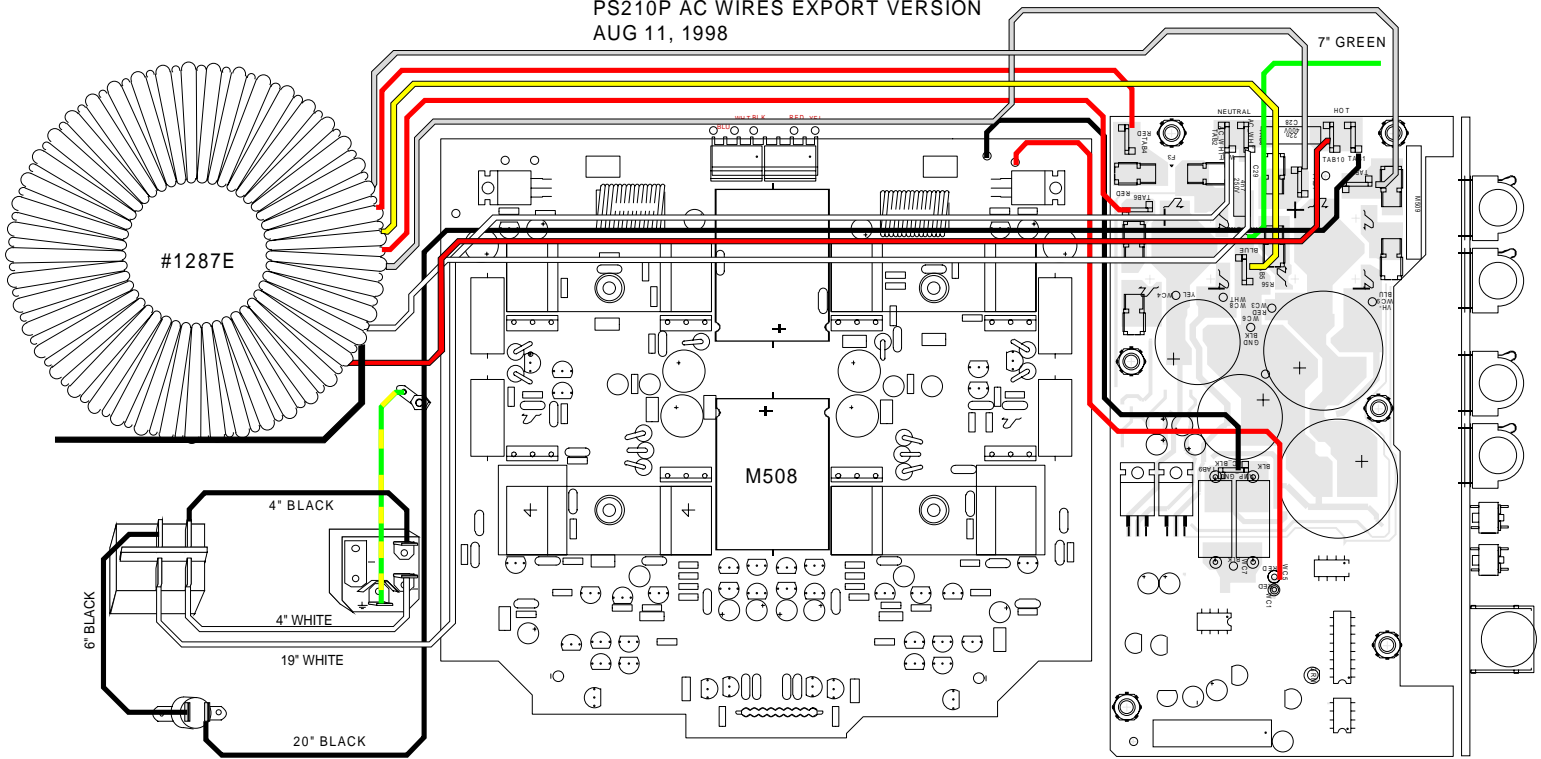
PS210P AC WIRES EXPORT VERSION
AUG 11, 1998



ON E4-PLUG WH & RED FOR 245
ON E2-PLUG WH 7 BL FOR 230
PUT 3487 CLIP ON UNUSED PIN

PUT CE LOGO ONLY ON 220 +CE SER#
NO CE ON 240 USE E4 SER#
SHOWN WIRED FOR 230V

PS210P AC WIRES EXPORT VERSION
 AUG 11, 1998



ON E4-PLUG WH & RED FOR 245
 ON E2-PLUG WH 7 BL FOR 230
 PUT 3487 CLIP ON UNUSED PIN

PUT CE LOGO ONLY ON 220 +CE SER#
 NO CE ON 240 USE E4 SER#
 SHOWN WIRED FOR 245V