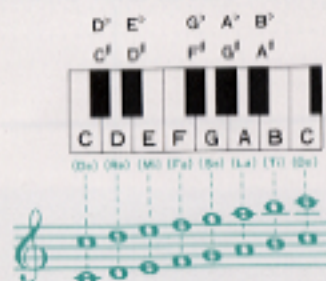


PART I: Before Starting to Play

Some Fundamentals of Music

Let us first look at the relationship between the conventional musical staff notation and the keys on the actual keyboard.

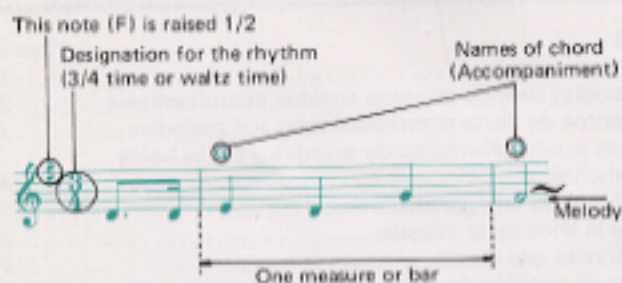


Next familiarize yourself with the notation for the length values of the notes and the rests.

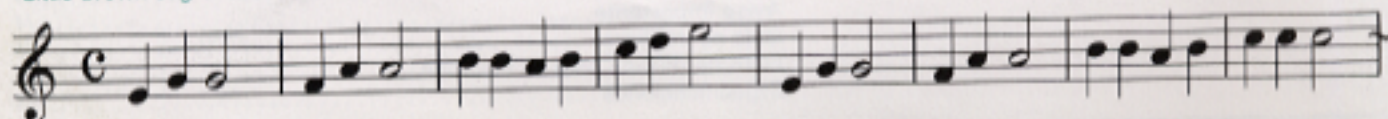
Symbol	Value in terms of quarter notes	
○	Whole note	$\uparrow + \uparrow + \uparrow + \uparrow$
⌒	Dotted half note	$\uparrow + \uparrow + \uparrow$
⌒	Half note	$\uparrow + \uparrow$
⌒	Dotted quarter note	$\uparrow + \uparrow$
⌒	Quarter note	\uparrow
♩	Dotted eighth note	$\uparrow + \uparrow$ ($\uparrow = \uparrow$)
♩	Eighth note	\uparrow ($\uparrow = \uparrow$)
♩	Sixteenth note	\uparrow ($\uparrow = \uparrow$)

Symbol	Rest values in terms of quarter rests	
—	Full rest	$\downarrow + \downarrow + \downarrow + \downarrow$
—	Dotted half rest	$\downarrow + \downarrow + \downarrow$
—	Half rest	$\downarrow + \downarrow$
⌒	Dotted quarter rest	$\downarrow + \downarrow$
⌒	Quarter rest	\downarrow
⌒	Dotted eighth rest	$\downarrow + \downarrow$ ($\downarrow = \downarrow$)
⌒	Eighth rest	\downarrow ($\downarrow = \downarrow$)
⌒	Sixteenth rest	\downarrow ($\downarrow = \downarrow$)

Now that you have a basic understanding of the relative values of the notes and rests, let's look at a segment of an actual score.



"Little Brown Jug"



Preliminary Settings for Sound Production

First of all, make sure that the plug is firmly inserted in the electrical outlet and then:

- 1) Turn the Power Switch to the 'ON' position. The power indicator lamp will light up.



- 2) Turn the Master Volume knob clockwise. This knob controls the volume for the entire instrument. The further you turn it clockwise, the greater the volume.



- 3) Depress the Expression Pedal. This pedal enables you to change the volume level while you are playing without taking your hands from the keyboards.



- 4) Select the desired Voice functions. (Refer to pages 2, 9 and 10 for instructions on setting these controls.)

PART II: Playing Melodies Using Various Instrumental Sounds



Special Presets

By pressing one of the voice selector buttons in the Special Presets switch bank, you can program the Electone to play with the sound quality and timbre of a variety of instruments. Let's use one of these instrumental voices to play a melody on the upper keyboard.

★ Please turn all other buttons and levers OFF.

- 1) Depress one of the seven voice selector buttons in the Special Presets switch bank.
- 2) Depress the yellow Special Presets tablet in the Preset Ensemble section.



- 3) Set the Special Presets Volume control to Max.
- 4) Pressing the keys of the upper keyboard will now produce the sound of the instrument you have selected.

★ Practice playing the melody on the previous page in a variety of different voices.

■ Symphonic

Now, if you depress the Symphonic button, the sound will be emitted from the two-channel built-in speakers, giving it a rich, expansive feel.

★ The Special Presets can also be used with the lower keyboard. Refer to page 11 for details.

Custom Voices

Like the Special Presets, the Custom Voices consist of an array of voices which can duplicate the sounds of a variety of instruments. Since the tone qualities and volumes of the voices in this array vary minutely, they produce a very realistic and natural sound.

- 1) Depress one of the eight (six on the C-405) voice selector buttons in the Custom Voices switch bank.
- 2) Depress the red Custom Voices tablet in the Preset Ensemble section.



- 3) Slide the Custom Voices Volume control lever to Max.
- 4) Pressing the keys of the upper keyboard will now produce the sound of the instrument you have chosen.

★ Practice using the following melody.

■ Bright Control (C-605 only)

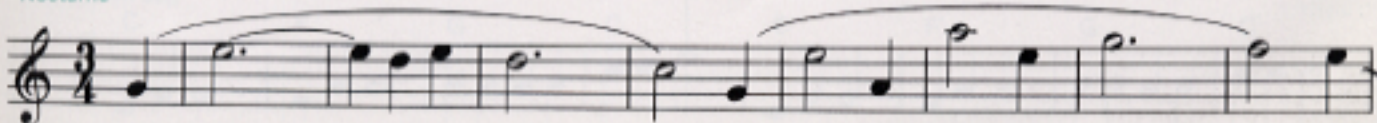
This slide lever allows you to make fine adjustments in the tone of the Custom Voices.

■ Tune Control (C-605 only)

This control allows you to fine tune the pitch of the Custom Voices, enabling you to achieve a three-dimensional effect in combination with other sounds.

★ The Custom Voices function can also be used with the lower keyboard and the pedals (C-605 only). Refer to page 11 for details.

"Nocturne"



PART III: Automatic Rhythm Accompaniments for Your Melodies



Auto Rhythm

This function automatically provides the clear, crisp rhythms of percussion instruments like cymbals, drums, bongos and the like. Why not add a little rhythmic background to your performance?

1) Choose one of the 16 Rhythm selector buttons and depress it.

You can also combine rhythms to achieve interesting and varied effects by pushing several buttons in any horizontal combination simultaneously. (However, it is not possible to obtain compound rhythms by pressing both buttons in any one vertical combination.)

2) Depress either one of the Start switches.

If you press the Start switch on the right the rhythm accompaniment will begin immediately.

If you press the Synchro Start switch on the left, the rhythmic accompaniment will cut in as soon as you depress either a key on the lower keyboard or one of the pedals.

3) The rhythm is regulated by a combination of the Tempo, Volume and Balance knobs.

TEMPO knob: The further this is turned clockwise, the faster the tempo of the rhythm.

VOLUME knob: (Inner control knob) Turn this clockwise to increase the volume.

BALANCE knob: (Outer control knob) Turn this clockwise to emphasize the rhythm's treble, and counter-clockwise to accentuate its bass.

■ Digital Tempo Display (C-605 only)

This digital display gives a reading of the tempo of the rhythm by indicating the number of quarter notes per minute. This allows you to ascertain the exact tempo of the rhythm at a glance.

■ Rhythm Variation

This function allows you to introduce a preselected one-bar rhythmic variation into the music every four or eight bars. Since the rhythms change at natural breaks in the musical phrasing, it provides an excellent way to enliven the music.

If you depress the ON button only, the new rhythm variation pattern will be introduced every four bars. To introduce the variation every eight bars you must depress both the ON and the 4 Bar/8 Bar buttons simultaneously.

■ Break Variation

To produce a break variation rhythm, simply press the ON switch. If you press this button while the normal rhythmic accompaniment is operating, it will light up and the rhythmic pattern will change to the fill-in pattern. When you remove your finger from the button the break variation rhythm will continue until the end of the bar and the original normal rhythmic pattern will be automatically restored from the beginning of the next bar.

★ This button also enables you to generate an intro rhythm automatically. If you press the ON switch before you depress the Rhythm Start switch, you will get a two-bar intro rhythm pattern before the rhythm starts.

★ When the Break Variation tablet is ON you can use the foot switch (located at the rear left of the Expression Pedal) to turn the break variation rhythm on and off. You thus have the convenience of being able to introduce the rhythm fill-in into the piece you are playing without taking your hands from the keyboard.

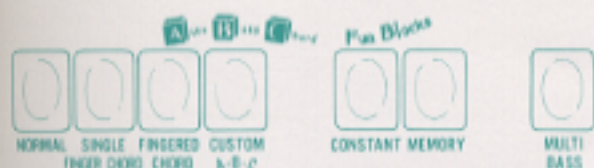


■ Rhythm Stop

If you depress this switch, you can use the foot switch (located at the rear left of the Expression Pedal) to stop the rhythm accompaniment whenever you wish without taking your hands from the keyboards.

★ Now, you can play the melodies shown on page 1 and 2 using your favorite rhythm.

PART IV: Automatic Chord and Bass Accompaniment



Auto Bass/Chord (Fun Blocks)

This function allows the introduction of lower keyboard chords and pedal bass notes into the rhythm accompaniment. You can thus play a wide variety of chords and bass notes automatically, determining the combination by selecting one of the function switches: Single Finger Chord, Fingered Chord, or Custom A-B-C. For added convenience and flexibility your Electone is also equipped with two more automatic functions - Memory and Multi Bass.

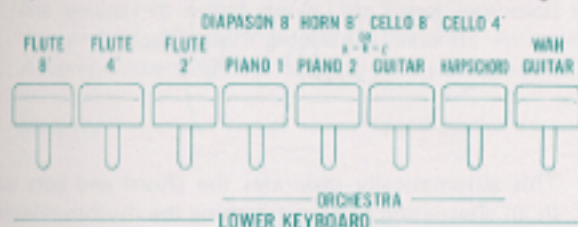
Automatic Chord Accompaniment at the Touch of a Finger

[Single Finger Chord]

1) Press the Start or Synchro Start switch in the Auto Rhythm switch bank.

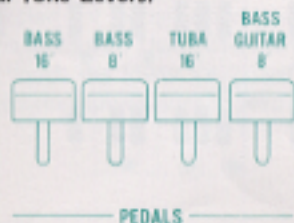
Depress the desired rhythm selector button and set the Tempo, Volume and Balance knobs.

2) Adjust the Lower Tone Levers to the desired settings.



When the Auto Bass/Chord switch is on, the four Orchestra voices of the Lower Tone Levers generate the tones of the instruments indicated in the lower line (Piano 1, Piano 2, Guitar, Harpsichord) and automatically produce a chord rhythm that matches the pattern produced by the Auto Rhythm section. The Flute tones will be constant.

3) Set the Pedal Tone Levers.



4) Depress the green Single Finger Chord button.



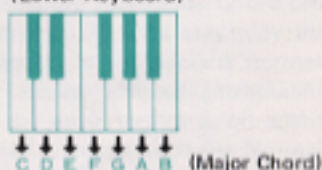
5) Now if you hold down one of the keys on the lower keyboard you will automatically introduce the chord and bass note into the established rhythm.



The chord produced at this time is the major chord whose fundamental is the note corresponding to the key played on the lower keyboard. Thus to produce a C major chord, just press the C key, press the F key to produce an F major chord and so forth.

Relation between key position on lower keyboard and the generated chord.

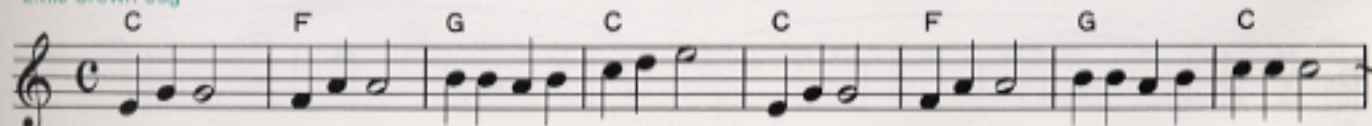
(Lower Keyboard)

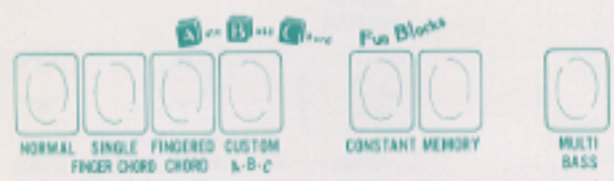


The bass note that is generated is also determined by the key played on the lower keyboard and will alternate with the chord automatically.

- ★ Try using this automatic program function while playing the selection given below. Play on the upper keyboard while you supply the accompaniment by simply pressing the key on the lower keyboard that corresponds to the fundamental of the chord you want.

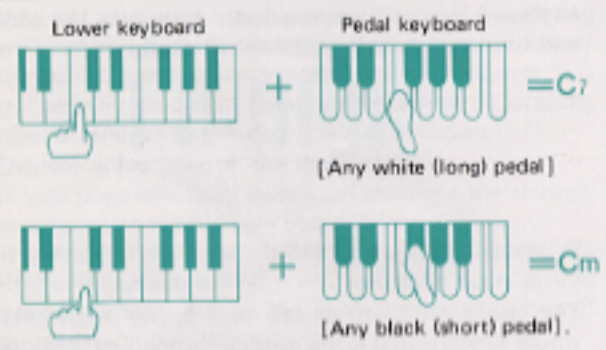
"Little Brown Jug"





■ Producing Minor and Seventh Chords

In addition to major chords, you can also use the Single Finger Chord function to produce automatic accompaniment with minor or seventh chords. To produce a seventh chord simply tread on any of the white (long) pedals on the pedalboard while holding down the appropriate key on the lower keyboard at the same time. To produce a minor chord, depress one of the black (short) pedals instead.



If you depress both a black and a white pedal while holding down a key on the lower keyboard the result will be a minor seventh chord.

★ Let's practice using this function while playing the melody below.

Producing an Automatic Chord Accompaniment by Fingering an Entire Chord

[Fingered Chord]

- 1) Turn on the Start or Synchro Start switch in the Auto Rhythm switch bank. Depress the desired rhythm selector button and set the Tempo, Volume and Balance knobs.
- 2) Adjust the Lower Tone Levers to the desired settings.
- 3) Adjust the Pedal Tone Levers to the desired settings.
- 4) Depress the red Fingered Chord button.

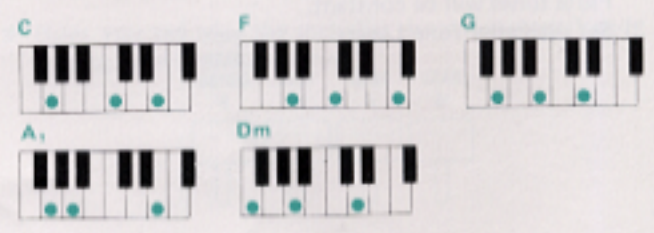


- 5) Finger and hold down a chord on the lower keyboard.



This automatically generates the chord and bass note in an alternating pattern matching the rhythm selected. The chord produced is the one fingered on the lower keyboard and the bass note is determined by this chord.

★ Play the accompaniment on the previous page using the fingered chord. This is the finger positioning for the lower keyboard:



"Nocturne"

Automatic Accompaniment Using Both Lower Keyboard and Pedals

[Custom A-B-C]

- 1) Turn on the Start or Synchro Start switch in the Auto Rhythm switch bank.

Depress the desired rhythm selector button and set the Tempo, Volume and Balance knobs.

- 2) Adjust the Lower Tone Levers to the desired settings.
- 3) Adjust the Pedal Tone Levers to the desired settings.
- 4) Switch on the white Custom A-B-C button.



- 5) Depress the pedals while holding down the chord on the lower keyboard.

The chord part of the Automatic Accompaniment will be the sound generated by the lower keyboard, while the bass note shall be based on the note depressed on the pedals. In other words, the lower keyboard and the pedals will each generate a separate Automatic Accompaniment, thus enhancing your performance.

■ Memory



This function allows you to store the Automatic Rhythm Accompaniment you have selected in a memory bank. If you press the Memory button together with the Single Finger Chord, the Fingered Chord or the Custom A-B-C button, the automatic rhythm accompaniment will continue even if you should remove your hand from the lower keyboard. (With the Custom A-B-C program the bass note selected for pedal accompaniment will also be retained in the memory.) Using this Memory function you have only to touch the lower keyboard to effect a chord change. A welcome convenience indeed!

■ Multi Bass



This function allows you to change the automatic bass accompaniment pattern. If you press the Multi Bass button together with the Single Finger Chord, the Fingered Chord or the Custom A-B-C button, the bass note will slip out of the former simple pattern of alternating with the chord into a number of other, more complex, patterns such as the 'walking style'. This permits you to use and enjoy a wide variety of automatic bass patterns in the pieces you play. The exact nature of the new pattern will vary according to the rhythm originally established.

■ Constant

This switch is used to disengage the automatic accompaniment from the auto-rhythm pattern. When the Constant button and the Single Finger or Fingered Chord button are pressed together, the automatic accompaniment will no longer match the auto-rhythm pattern. Instead, the chord and the bass note will be produced continuously, as if the respective keys were being held down. This function can also be coupled with the Memory function to allow greater flexibility.

■ Normal

This control cancels the Auto Bass/Chord program. When the Normal control is ON you may play the lower keyboard and the pedals to provide any normal accompaniment you may desire without introducing automatic patterns. When the auto-rhythm is on and the Memory button is depressed together with the Normal button, the last sound you played on the lower keyboard will be emitted continuously even if you take your hand off.

- ★ The Auto Bass/Chord function will not operate if the Break Variation program is on.
- ★ If you do not employ the Auto-Rhythm, the Auto Bass/Chord program will not function.