



USB MIDI INTERFACE
UM-2EX

Owner's Manual
Bedienungsanleitung
Mode d'emploi
Manuale d'uso
Manual del usuario

Thank you, and congratulations on your choice of the UM-2EX USB MIDI Interface.



Before using this unit, carefully read the sections entitled: "USING THE UNIT SAFELY" and "IMPORTANT NOTES" (p. 2; p. 4). These sections provide important information concerning the proper operation of the unit. Additionally, in order to feel assured that you have gained a good grasp of every feature provided by your new unit, Owner's manual should be read in its entirety. The manual should be saved and kept on hand as a convenient reference.

Copyright © 2005 ROLAND CORPORATION
All rights reserved. No part of this publication may be reproduced in any form
without the written permission of ROLAND CORPORATION.




USING THE UNIT SAFELY

INSTRUCTIONS FOR THE PREVENTION OF FIRE, ELECTRIC SHOCK, OR INJURY TO PERSONS

About ⚠ WARNING and ⚠ CAUTION Notices




 WARNING	Used for instructions intended to alert the user to the risk of death or severe injury should the unit be used improperly.
 CAUTION	Used for instructions intended to alert the user to the risk of injury or material damage should the unit be used improperly. * Material damage refers to damage or other adverse effects caused with respect to the home and all its furnishings, as well to domestic animals or pets.

About the Symbols



	The ⚠ symbol alerts the user to important instructions or warnings. The specific meaning of the symbol is determined by the design contained within the triangle. In the case of the symbol at left, it is used for general cautions, warnings, or alerts to danger.
	The ⚡ symbol alerts the user to items that must never be carried out (are forbidden). The specific thing that must not be done is indicated by the design contained within the circle. In the case of the symbol at left, it means that the unit must never be disassembled.
	The ⏻ symbol alerts the user to things that must be carried out. The specific thing that must be done is indicated by the design contained within the circle. In the case of the symbol at left, it means that the power cord plug must be unplugged from the outlet.

ALWAYS OBSERVE THE FOLLOWING


WARNING



- Before using this unit, make sure to read the instructions below, and the Owner's Manual. 
- Do not open (or modify in any way) the unit. 
- Do not attempt to repair the unit, or replace parts within it (except when this manual provides specific instructions directing you to do so). Refer all servicing to your retailer, the nearest Roland Service Center, or an authorized Roland distributor, as listed on the "Information" page. 


WARNING


- Never use or store the unit in places that are:
 - Subject to temperature extremes (e.g., direct sunlight in an enclosed vehicle, near a heating duct, on top of heat-generating equipment); or are
 - Damp (e.g., baths, washrooms, on wet floors); or are
 - Humid; or are
 - Exposed to rain; or are
 - Dusty; or are
 - Subject to high levels of vibration.



WARNING

- Make sure you always have the unit placed so it is level and sure to remain stable. Never place it on stands that could wobble, or on inclined surfaces. 


- Do not allow any objects (e.g., flammable material, coins, pins); or liquids of any kind (water, soft drinks, etc.) to penetrate the unit. 


- Immediately disconnect the USB cable, and request servicing by your retailer, the nearest Roland Service Center, or an authorized Roland distributor, as listed on the "Information" page when: 
 - If smoke or unusual odor occurs
 - Objects have fallen into, or liquid has been spilled onto the unit; or
 - The unit has been exposed to rain (or otherwise has become wet); or
 - The unit does not appear to operate normally or exhibits a marked change in performance.




- In households with small children, an adult should provide supervision until the child is capable of following all the rules essential for the safe operation of the unit. 

- Protect the unit from strong impact. (Do not drop it!) 

WARNING

- DO NOT play a CD-ROM disc on a conventional audio CD player. The resulting sound may be of a level that could cause permanent hearing loss. Damage to speakers or other system components may result. 

CAUTION

- Try to prevent cords and cables from becoming entangled. Also, all cords and cables should be placed so they are out of the reach of children. 
- Never climb on top of, nor place heavy objects on the unit. 
- Disconnect all cords coming from external devices before moving the unit. 

IMPORTANT NOTES

In addition to the items listed under “USING THE UNIT SAFELY” on pages 2 and 3, please read and observe the following:

Placement

- This device may interfere with radio and television reception. Do not use this device in the vicinity of such receivers.
- Noise may be produced if wireless communications devices, such as cell phones, are operated in the vicinity of this unit. Such noise could occur when receiving or initiating a call, or while conversing. Should you experience such problems, you should relocate such wireless devices so they are at a greater distance from this unit, or switch them off.
- Do not expose the unit to direct sunlight, place it near devices that radiate heat, leave it inside an enclosed vehicle, or otherwise subject it to temperature extremes. Excessive heat can deform or discolor the unit.
- When moved from one location to another where the temperature and/or humidity is very different, water droplets (condensation) may form inside the unit. Damage or malfunction may result if you attempt to use the unit in this condition. Therefore, before using the unit, you must allow it to stand for several hours, until the condensation has completely evaporated.

Maintenance

- For everyday cleaning wipe the unit with a soft, dry cloth or one that has been slightly dampened with water. To remove stubborn dirt, use a cloth impregnated with a mild, non-abrasive detergent. Afterwards, be sure to wipe the unit thoroughly with a soft, dry cloth.
- Never use benzene, thinners, alcohol or solvents of any kind, to avoid the possibility of discoloration and/or deformation.

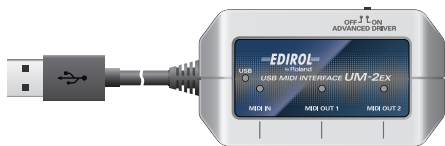
Additional Precautions

- Use a reasonable amount of care when using the unit's buttons, sliders, or other controls; and when using its jacks and connectors. Rough handling can lead to malfunctions.
- When connecting / disconnecting all cables, grasp the connector itself—never pull on the cable. This way you will avoid causing shorts, or damage to the cable's internal elements.
- To avoid disturbing your neighbors, try to keep the unit's volume at reasonable levels (especially when it is late at night).
- When you need to transport the unit, pack it in shock-absorbent material. Transporting the unit without doing so can cause it to become scratched or damaged, and could lead to malfunction.

Contents of the Package

The UM-2EX includes the following items. When you open the package, first make sure that all items are included. If any are missing, contact the dealer where you purchased the UM-2EX.

USB MIDI Interface UM-2EX



CD-ROM

This contains drivers for use with the UM-2EX.

Owner's Manual

This is the manual you are reading. Please keep it on hand for reference.

Contents

Names of Things and What They Do	9
Getting Connected and Installing Drivers (Windows)	11
About the Driver Modes	11
Installing the Driver.....	12
Windows XP/2000 users	12
Windows Me/98 users	17
Setting the Driver	18
Windows XP users	18
Windows 2000/Me users	19
Windows 98 users	20
Getting Connected and Installing Drivers (Macintosh)	21
About the Driver Modes	21
Driver Installation and Settings.....	21
Mac OS X users.....	22
Mac OS 9 users.....	26
Basic Use	33
Basic Connections and MIDI Flow	33
Transmitting MIDI messages from a MIDI keyboard or digital piano to the sequencer software	33
Transmitting MIDI Messages from the sequencer software to a MIDI sound module or digital piano.....	34
Appendices	35
About Standard Driver Mode	35
Installation of the standard driver	35
Standard driver settings	35
Troubleshooting	36
Main Specifications	44

Deutsch

Anschlüsse herstellen und Treiber installieren (Windows)	45
Treiber installieren.....	45
Windows XP/2000-Anwender	45
Anschlüsse herstellen und Treiber installieren (Macintosh)	48
Treiberinstallation und Einstellung	48
Mac OS X-Anwender	48

Français

Connexion et installation des pilotes (Windows)	52
Installation du pilote	52
Windows XP/2000	52
Installation des pilotes et connexions (Macintosh)	55
Installation et configuration du pilote	55
Mac OS X	55

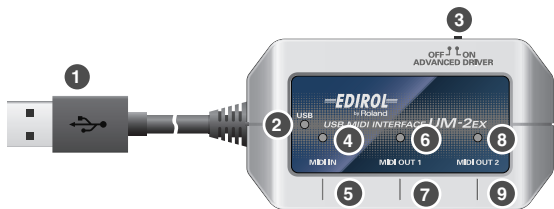
Italiano

Collegamento e installazione dei driver (Windows)	59
Installazione del driver	59
Utenti Windows XP/2000	59
Collegamento e installazione dei driver (Macintosh)	62
Installazione e configurazione dei driver	62
Utenti Mac OS X	62

Español

Conexión e instalación de los controladores (Windows)	66
Instalación del controlador	66
Usuarios de Windows XP/2000	66
Conexión e instalación de los controladores (Macintosh)	69
Instalación del controlador y ajustes.....	69
Usuarios de Mac OS X	69

Names of Things and What They Do



1 USB Cable

Use this when connecting the UM-2EX to your computer.

2 USB Indicator

This will light when you've connected the UM-2EX to your computer and your computer has detected the UM-2EX.

In order for your computer to detect the UM-2EX, you must install the driver and make settings. (→“Getting Connected and Installing Drivers” Windows (p. 11) / Macintosh (p. 21))

3 ADVANCED (mode select) Switch

This switches the operating mode.

* Standard driver mode supports only Windows XP SP2 or later, and Mac OS X.

If you are using Windows 98 / Me / 2000 / XP or XP SP1, or if you are using Mac OS 9, you must turn the ADVANCED (mode select) Switch ON before you connect the UM-2EX to your computer.

ON (Advanced mode)	This mode utilizes the UM-2EX's special, advanced MIDI driver. This advanced driver uses *FPT technology for rapid, high-performance MIDI transmissions. We recommend use of this mode.
OFF (Standard driver mode)	This mode uses the standard MIDI driver included with the OS. Use this if you do not have the special driver installed.

*FPT=Fast Processing Technology of MIDI Transmission

4 MIDI IN Indicator

This lights when MIDI messages are received from the device connected to MIDI IN.

5 MIDI IN Connector

Connect this to the MIDI OUT connector of the device (such as a MIDI keyboard) that will be transmitting MIDI messages to your computer.

6 MIDI OUT 1 Indicator

This lights when MIDI messages from the computer are transmitted.

7 MIDI OUT 1 Connector

Connect this to the MIDI IN connector of the device (such as a sound module) that is to be employed by your computer for playing music.

8 MIDI OUT 2 Indicator

This lights when MIDI messages from the computer are transmitted.

9 MIDI OUT 2 Connector

Connect this to the MIDI IN connector of the device (such as a sound module) that is to be employed by your computer for playing music.

Getting Connected and Installing Drivers (Windows)

About the Driver Modes

What is a driver?

A “driver” is software that transfers data between the UM-2EX and application software running on your computer, when your computer and the UM-2EX are connected. The driver sends data from your application to the UM-2EX, and from the UM-2EX to your application.

About the driver modes

The UM-2EX has two operating modes, **Advanced mode** and **Standard driver mode**, and a different driver is used by each mode.

* *Standard driver mode supports only Windows XP SP2 or later.*

If you are using Windows 98 / Me / 2000 / XP or XP SP1, you must turn the **ADVANCED (mode select) Switch ON before you connect the UM-2EX to your computer.**

ON (Advanced mode)	This mode utilizes the UM-2EX’s special, advanced MIDI driver. This advanced driver uses *FPT technology for rapid, high-performance MIDI transmissions. We recommend use of this mode. (→ “Installing the Driver” (p. 12))
OFF (Standard driver mode)	This mode uses the standard MIDI driver included with the OS. Use this if you do not have the special driver installed. (→ “Installation of the standard driver” (p. 35))

*FPT = Fast Processing Technology for MIDI Transmission

Installing the Driver

The installation procedure will differ depending on your system. Please proceed to one of the following sections, depending on the system you use.

- Windows XP/2000 users.....p. 12
- Windows Me/98 users.....p. 17

Steps to be performed on the UM-2EX itself are marked by a **Operation of the UM-2EX** symbol.

Windows XP/2000 users

1. With the UM-2EX left unconnected, start up Windows.
Do not connect the UM-2EX to the computer until you reach Step 13 (p. 14).
 - * *Disconnect all USB cables except for a USB keyboard and USB mouse (if used).*
 - * *Log onto Windows using a user name that has administrative privileges (such as Administrator).*
2. Open the **System Properties** dialog box.
Windows XP:
 1. Click the Windows **start** menu, and from the menu, select **Control Panel**.
 2. In **"Pick a category,"** click **"Performance and Maintenance."**
 3. In **"or pick a Control Panel icon,"** click the **System** icon.
Depending on your setup, the **System** icon may appear directly in the **Control Panel** (Classic view). If so, double-click the **System** icon.**Windows 2000:**
 1. Click the Windows **Start** menu, and from the menu that appears, select **Settings | Control Panel**.
 2. In **Control Panel**, double-click the **System** icon.
3. Click the **Hardware** tab, then click **[Driver Signing]**.
The **Driver Signing Options** dialog box will open.
4. In the **Driver Signing Options** dialog box, select **"Ignore,"** then click **[OK]**.
If the current setting is "Warn" or "Block," change this to **"Ignore."** Then, when you've finished installing the driver, change it back to the original setting.

5. Click **[OK]** to close the **System Properties** dialog box.
6. Exit all currently running software (applications).
Also close any currently open windows. If you are using virus checking or similar software, you must exit all of these programs as well.
7. Prepare the CD-ROM.
Insert the CD-ROM into your computer's CD-ROM drive.
** If the message **"Windows can perform the same action each time you insert a disk or connect a device with this kind of file"** appears, **[Cancel]**.*
8. From the Windows **start** menu, choose **Run...**
9. In the **Open** field of the **"Run..."** dialog box, type the following and click **[OK]**.
D: \Driver\XP2k\setup.exe
** The drive name is **"D:"** in the example shown here, but may be different on your system. Use the drive name for your CD-ROM drive.*
10. The **Driver Setup** dialog box will appear.
Click **[Next]**.
11. To begin the installation, click **[Next]** once again. Installation will begin.

Windows XP:

If **"Driver Signing Options"** in step 4 is set to anything other than **"Ignore,"** a dialog box with an **"I"** or **"x"** symbol will appear. If a **[Continue Anyway]** button is displayed, click **[Continue Anyway]** to proceed with the installation. If you are unable to continue, click **[OK]** and repeat the driver installation from step 1.

Windows 2000:

If **"Driver Signing Options"** in step 4 is set to anything other than **"Ignore,"** a dialog box indicating **"Digital Signature Not Found"** will appear. If a **[Yes]** button is displayed, click **[Yes]** to proceed with the installation. If you are unable to continue, click **[OK]** and repeat the driver installation from step 1.

The **"Setup is now ready to install the drivers"** dialog box will appear.
Now you are ready to install the driver.

12. **Operation of the UM-2EX** Set the UM-2EX's **ADVANCED (mode select) Switch** to **ON**.

** The driver cannot be installed by means of the following procedure if the switch is set to OFF.*

If you are using Windows 98 / Me / 2000 / XP or XP SP1, you must turn the ADVANCED (mode select) Switch ON before you connect the UM-2EX to your computer.

- 13. Operation of the UM-2EX** Connect the UM-2EX to your computer.

A message of “**Found New Hardware**” will appear. Please wait.

- * *This unit is equipped with a protection circuit. A brief interval (a few seconds) after connecting the UM-2EX is required before the unit will operate normally.*

Windows XP:

- 1. The Found New Hardware Wizard** dialog box will appear.

If the message “**Connect to Windows Update to search for software?**” appears, choose “**No**” and then click [**Next**].

- 2. Make sure that “EDIROL UM-2” is indicated. Then, choose “Install the software automatically (Recommended)” and click [Next].**

- * *If “**Driver Signing Options**” in step 4 is set to anything other than “**Ignore**,” a dialog box with an “!” symbol will appear. Click [**Continue Anyway**] to proceed with the installation.*

Windows 2000:

If “**Driver Signing Options**” in step 4 is set to anything other than “**Ignore**,” a dialog box indicating “**Digital Signature Not Found**” will appear. Click [**Yes**] to proceed with the installation.

- 14. The Completing the Found New Hardware Wizard** dialog box will appear.

Click [**Finish**].

- 15. In the Driver Setup** dialog box, click [**Close**].

This completes driver installation.

If the **Change System Settings** dialog box appears, click [**Yes**]. Windows will restart automatically.

- * *If you changed the “**Driver Signing Options**” setting (step 4 on p. 12), restore the original settings after Windows has restarted.*

Next, in order to ensure that MIDI processing occurs smoothly, you need to make settings so that Background Services is given priority.

(→ “**Giving priority to Background Services**” (p. 15))

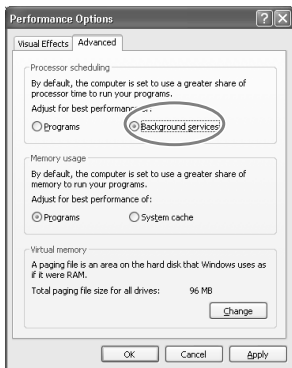
■ Giving priority to Background Services

To ensure that MIDI data is handled smoothly, proceed as follows to make this setting.

Windows XP:

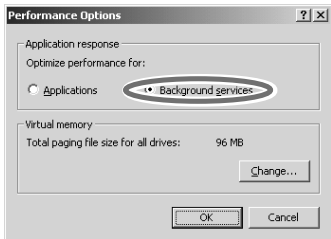
1. Open the **System Properties** dialog box.
 1. From the Windows **start** menu, choose **Control Panel**.
 2. In “**Pick a category,**” click “**Performance and Maintenance.**”
 3. In “**or Pick a Control Panel icon,**” click the **System** icon.
Depending on your setup, the **System** icon may appear directly in the **Control Panel** (Classic view). If so, double-click the **System** icon.
2. Click the **Advanced** tab.
3. In the right side of the **Performance** area, click [**Settings**].
The **Performance Options** dialog box will open.
4. Click the **Advanced** tab.
5. In the **Processor scheduling** area, choose “**Background services,**” and click [**OK**].
6. In the **System Properties** dialog box, click [**OK**].
The **System Properties** dialog box will close.

Next, you’ll make the driver settings. (→ “**Setting the Driver**” (p. 18))



Windows 2000:

1. Click the Windows **Start** button, and from the menu that appears, select **Settings | Control Panel**.
2. In **Control Panel**, double-click the **System** icon.
3. Click the **Advanced** tab.
4. At the right of the **Performance** field, click **[Performance Options]**.
The **Performance Options** dialog box will appear.
5. In the **Application response** field, choose **“Background services”** and click **[OK]**.



6. Click **[OK]** to close the **System Properties** dialog box.
The **System Properties** dialog box will close.

Next, you'll make the driver settings. (→ **“Setting the Driver”** (p. 18))

Windows Me/98 users

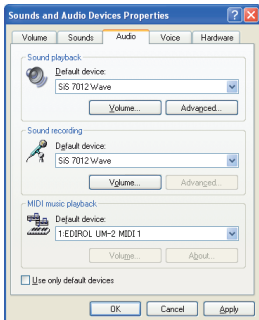
1. With the UM-2EX left unconnected, start up Windows.
Do not connect the UM-2EX to the computer until you reach Step 9.
2. Exit all currently running software.
Also close any open windows. If you are using virus checking or similar software, be sure to exit it as well.
3. Prepare the CD-ROM.
Insert the CD-ROM into the CD-ROM drive of your computer.
4. Click the Windows **Start** menu. From the menu that appears, select **Run...**
The “**Run...**” dialog box will appear.
5. In the dialog box that appears, input the following into the “**Open**” field, and click **[OK]**.
D:\Driver\Me98\Setup.exe
** The drive name is “D:” in the example shown here, but may be different on your system. Use the drive name for your CD-ROM drive.*
6. The **Driver Setup** dialog box will appear. Click **[Next]**.
7. To begin the installation, click **[Next]** once again. Installation will begin.
The “**Setup is now ready to install the drivers**” dialog box will appear.
Now you are ready to install the driver.
8. **Operation of the UM-2EX** Set the UM-2EX’s **ADVANCED (mode select) Switch** to the **ON** position.
** The driver cannot be installed by means of the following procedure if the switch is set to OFF.*
If you are using Windows 98 / Me / 2000 / XP or XP SP1, you must turn the ADVANCED (mode select) Switch ON before you connect the UM-2EX to your computer.
9. **Operation of the UM-2EX** Connect the UM-2EX to your computer.
A message of “**Found New Hardware**” will appear. Please wait.
** This unit is equipped with a protection circuit. A brief interval (a few seconds) after connecting the UM-2EX is required before the unit will operate normally.*
10. In the **Driver Setup** dialog box, click **[Close]**.
Next, you’ll make the driver settings. (→ “**Setting the Driver**” (p. 18))

Setting the Driver

The following describes the settings needed to use the UM-2EX with Media Player or other sequencer software using Windows standard device settings. If you are using sequencer software that does not utilize Windows standard device settings, make the device settings within the sequencer software.

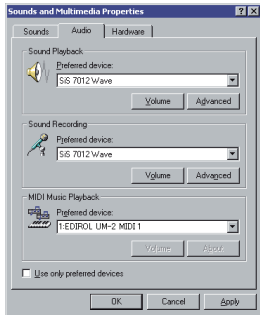
Windows XP users

1. Open the **Sounds and Audio Devices Properties** dialog box.
 1. From the Windows **start** menu, choose **Control Panel**.
 2. In “**Pick a category,**” click **Sound, Speech, and Audio Devices**.
 3. In “**or Pick a Control Panel icon,**” click the **Sounds and Audio Devices** icon.
Depending on your setup, the **Sounds and Audio Devices** icon may appear directly in the **Control Panel** (Classic view). If so, double-click the **Sounds and Audio Devices** icon.
2. Click the **Audio** tab.
3. For **MIDI music playback**, click the ▼ located at the right of [**Default device**], and select the MIDI device from the list that appears.
Selecting “**EDIROL UM-2 MIDI 1**” enables sounds to be played from the sound module connected to the UM-2EX’s MIDI OUT 1 connector with Media Player or other sequencer software utilizing Windows standard device settings.
4. Close the **Sounds and Audio Devices Properties** dialog box.
Click [**OK**] to complete the settings.



Windows 2000/Me users

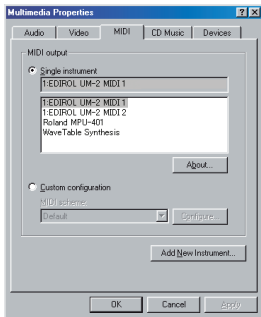
1. Open the **Sounds and Multimedia Properties** dialog box.
 1. Click the Windows **start** button, and from the menu that appears, select **Settings | Control Panel**.
 2. In **Control Panel**, double-click the **Sounds and Multimedia** icon.
If **Sounds and Multimedia** icon is not displayed, click “**Show all control panel options**” in the frame at the left.
2. Click the **Audio** tab.
3. Click ▼ in the **MIDI Music Playback [Preferred device]** menu and select the MIDI device from the list that appears.
Selecting “**EDIROL UM-2 MIDI 1**” enables sounds to be played from the sound module connected to the UM-2EX’s MIDI OUT 1 connector with Media Player or other sequencer software utilizing Windows standard device settings.
4. Close the **Sounds and Multimedia Properties** dialog box.
Click **[OK]** to complete the settings.



Windows 98 users

1. Open the **Multimedia Properties** dialog box.
 1. Click the Windows **Start** menu, and from the menu that appears, select **Settings | Control Panel**.
 2. In **Control Panel**, double-click the **Multimedia** icon.
 2. Click the **MIDI** tab.
3. Select **[Single instrument]**, and select the MIDI device from the list that appears.

If you want to use Media Player to play a sound module connected to the UM-2EX's MIDI OUT 1 connector, select **"EDIROL UM-2 MIDI 1."**
4. Close the **Multimedia Properties** dialog box. Click **[OK]** to complete the settings.



Getting Connected and Installing Drivers (Macintosh)

About the Driver Modes

What is a driver?

A “driver” is software that transfers data between the UM-2EX and application software running on your computer, when your computer and the UM-2EX are connected. The driver sends data from your application to the UM-2EX, and from the UM-2EX to your application.

About the driver modes

The UM-2EX has two operating modes, **Advanced mode** and **Standard driver mode**, and a different driver is used by each mode.

* *Standard driver mode supports only Mac OS X.*

If you're using OS 9, you must turn the ADVANCED (mode select) Switch ON before you connect the UM-2EX to your Macintosh.

ON (Advanced mode)	This mode utilizes the UM-2EX's special, advanced MIDI driver. This advanced driver uses *FPT technology for rapid, high-performance MIDI transmissions. We recommend use of this mode. (→ “Driver Installation and Settings” (p. 21))
OFF (Standard driver mode)	This mode uses the standard MIDI driver included with the OS. Use this if you do not have the special driver installed. (→ “Installation of the standard driver” (p. 35))

*FPT = Fast Processing Technology for MIDI Transmission

Driver Installation and Settings

The installation procedure will differ depending on your system. Please proceed to one of the following sections, depending on the system you use.

- Mac OS X users..... (p. 22)
- Mac OS 9 users (p. 26)

Steps to be performed on the UM-2EX itself are marked by a **Operation of the UM-2EX** symbol.

Mac OS X users

■ Installing the driver

* If the **“Authenticate”** dialog box appears during the installation, input the password and click **“OK.”**

* What you actually see on your Macintosh screen may be different, depending on your computing environment and the operating system you're using.

1. With the UM-2EX left unconnected, start up Macintosh.

* Disconnect all USB cables other than those for your keyboard and mouse, and restart your Macintosh.

2. Exit all currently running software (applications).

3. Prepare the CD-ROM.

Insert the CD-ROM into the CD-ROM drive of your Macintosh.

4. In the **Driver (Mac OS X)** folder of the CD-ROM, double-click **UM2USBDriver.pkg**.

A message such as **“This Installer package needs to...”** may appear.

Click **“Continue.”**

5. The display will indicate **“Welcome to the EDIROL UM-2Driver Installer.”** Click **[Continue]**.

6. The display will indicate **“Select a Destination.”**

Click the drive in which the operating system is installed to select it, and then click **[Continue]**.

* Select your startup disk as the drive.

7. The display will indicate **“Easy Install.”**

Click **[Install]** or **[Upgrade]**.

8. The display will indicate **“Installing this software requires you to restart your computer when the installation is done.”**

Click **[Continue Installation]**.

9. The display will indicate **“The software was successfully installed.”**

Click **[Restart]** to restart your Macintosh.

This completes installation of the UM-2 driver.

Next, make MIDI device settings. (→**“Setting the driver”** (p. 23))

■ Setting the driver

The following describes the settings enabling use of the UM-2EX with sequencer software using Macintosh standard device settings.

If you are using sequencer software that does not utilize Macintosh standard device settings, make the device settings within the sequencer software.

* What you actually see on your Macintosh screen may be different, depending on your computing environment and the operating system you're using.

1. **Operation of the UM-2EX** Set the UM-2EX's **ADVANCED (mode select) Switch** to the **ON** position.
2. **Operation of the UM-2EX** Connect the UM-2EX to your Macintosh.
 - * Connect the cable to the USB connector of the Macintosh itself, not to the USB connector of the keyboard.
 - * This unit is equipped with a protection circuit. A brief interval (a few seconds) after connecting the UM-2EX is required before the unit will operate normally.
3. Open the **Applications** folder of your Macintosh hard disk. In the **Utilities** folder, double-click **Audio MIDI Setup** to open the **Audio MIDI Setup** dialog box.



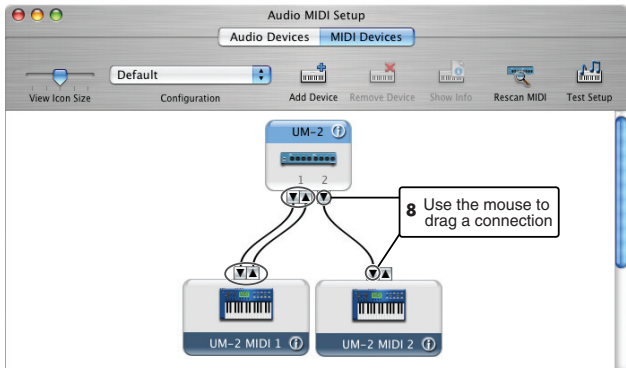
4. Click the **MIDI Devices** tab.
5. Confirm that **UM-2** appears in the **Audio MIDI Setup** dialog box.
 - * If **UM-2** does not appear or if it is grayed out, it means that the UM-2EX is not being recognized properly. Click **Rescan MIDI**. Also try disconnecting and reconnecting the UM-2EX.
 - * Previous settings from installation of a different version of the driver may still remain. If this is the case, click on the grayed **UM-2** or **EDIROL UM-2** to select it, then click **Remove Selected Device** to delete the settings.
6. Click **Add Device** twice.
Two **new external device** will appear.

7. Set the Device Name.

1. With the **new external device** selected, click **Show Info**.
2. Enter the name in the **Device Name** field.



- 8. Connect the ▼ and ▲ symbols (which signify the outputs and inputs) of the **UM-2** icon to those of the **new external device** icon by using the mouse to drag between them.**




- 9. If running Mac OS X v10.2 or earlier:**

Close the **Audio MIDI Setup** dialog box. The settings are completed.

If running Mac OS X v10.3 or later:

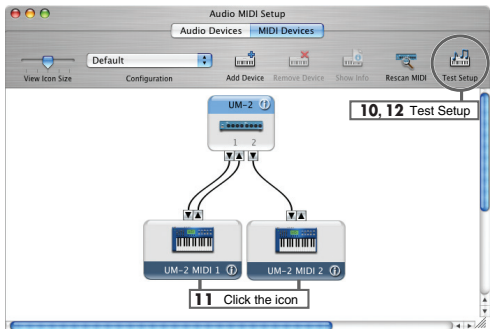
Confirm that MIDI is being transmitted and received correctly. Perform Steps 10–13 (p. 25).

10. Click **Test Setup.**

The shape of the mouse cursor changes .

11. Click the area shown in the illustration. If the corresponding MIDI OUT indicator of the UM-2EX blinks, the settings have been made correctly.

12. Click **Test Setup and complete the confirmation.**



13. Close the **Audio MIDI Setup dialog box.**

When using the UM-2EX with your sequencer software

Before using the UM-2EX with your sequencer software, please note the following points.

- Connect the UM-2EX to your Macintosh before you start up your sequencer software.
- Do not disconnect the UM-2EX from your Macintosh while your sequencer software is running. Quit your sequencer software before you disconnect the UM-2EX from your Macintosh.
- The UM-2EX will not operate in the Mac OS X Classic environment. Use the UM-2EX when the Classic environment is not running.

Mac OS 9 users

■ Installing the UM-2 driver

Use either OMS or FreeMIDI as the MIDI driver.

The included **UM-2 driver** is an add-on module for using the UM-2EX with OMS or FreeMIDI. OMS can be found in the **OMS 2.3.8 E** folder within the **OMS (Mac OS 9)** folder of the CD-ROM. If you would like to know more about OMS, refer to **OMS_2.3_Mac.pdf** which can be found in the same folder.

- * Either **OMS** or **FreeMIDI** must be installed in your Macintosh, as appropriate for the sequencer software you are using.
- * If you install OMS after installing the UM-2 driver, you must install the UM-2 driver once again.

If a UM-2EX is already connected to your Macintosh when you install the driver, a message like the following will appear when the Macintosh is started up. Perform the steps described below as appropriate for the message that is displayed.

If the screen indicates:

“Software needed for the USB device “UM-2” is not available. Would you like to look for the software on the Internet?” → click [**Cancel**].

Use the following procedure to install the UM-2EX driver.

1. With the UM-2EX left unconnected, start up Macintosh
 - * *Disconnect all USB cables other than those for your keyboard and mouse, and restart your Macintosh.*
2. Exit all currently running software (applications).
3. Prepare the CD-ROM. Insert the CD-ROM into the CD-ROM drive of your Macintosh.
4. Double-click the **UM-2 Driver-E Installer** icon (found in the **Driver E (Mac OS 9)** folder of the CD-ROM) to start up the installer.

5. Verify the **Install Location, and click **[Install]**.**

The installation location will be shown differently depending on your system. Make sure that you have selected the startup disk for the system you are currently using.

6. If a message like the following is displayed, click **[Continue].**

The other currently running software will exit, and installation will continue.



7. A dialog box will indicate **Installation was successful.**

Click **[Restart]** to restart your Macintosh.

Next, make the driver settings.

- OMS users p. 28
- FreeMIDI users p. 31

■ OMS settings

If you are using FreeMIDI, proceed to “FreeMIDI settings” (p. 31).

1. **Operation of the UM-2EX** Set the UM-2EX's **ADVANCED (mode select) Switch** to the **ON** position.
2. **Operation of the UM-2EX** Connect the UM-2EX to your Macintosh.
 - * *Connect the cable to the USB connector of the Macintosh itself, not to the USB connector of the keyboard.*
 - * *This unit is equipped with a protection circuit. A brief interval (a few seconds) after connecting the UM-2EX is required before the unit will operate normally.*
3. From the CD-ROM, drag the **Driver E (Mac OS 9) - OMS Setting** folder into the **Opcode - OMS Applications** folder on the hard disk of your Macintosh to copy it there.
4. In the **Opcode - OMS Applications** folder where you installed OMS, double-click **OMS Setup** to start it up.



OMS Setting



OMS Setup

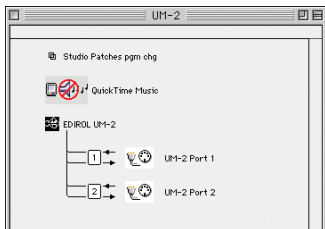
5. If a dialog box like the one shown here appears, click **[Turn It Off]**. A **confirmation** dialog box will then appear, so click **[OK]**.
 - * *We recommend that you **turn off AppleTalk**, by selecting **Chooser** from the **Apple** menu.*



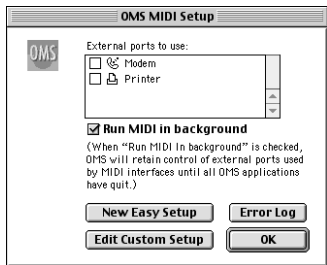
6. The **Create a New Studio Setup** dialog box will appear. Click **[Cancel]**.
If you accidentally clicked **[OK]**, click **[Cancel]** in the next screen.



7. Choose **“Open”** from the **File** menu.
From the **OMS Setting** folder that you copied in **step 3**, select the **UM-2** file, and click **[Open]**.
A screen like the one shown here will appear.

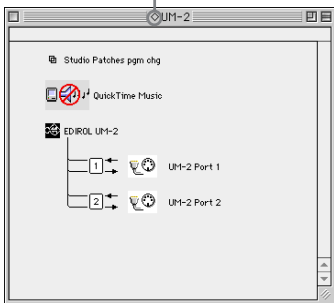


8. From the **Edit** menu, select **OMS MIDI Setup**.
In the **OMS MIDI Setup** dialog box that appears, check **Run MIDI in background**, and click **[OK]**.

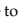


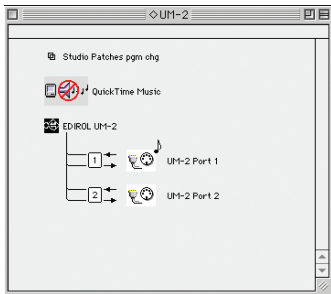
9. From the **File** menu, choose **Make Current**.
If you are unable to select **Make Current**, it has already been applied, and you may continue to the next step.

A diamond mark (◊) indicates the settings are enabled.



10. Verify that MIDI transmission and reception can be performed correctly.
From the **Studio** menu, choose **Test Studio**.

11. When you move the mouse cursor near the MIDI connector icon, the cursor will change to a  shape.
Click the MIDI connector icon shown in the illustration. If the corresponding MIDI OUT indicator of the UM-2EX blinks, the settings have been made correctly.

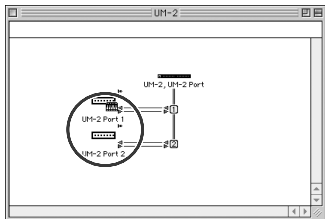


12. Exit **OMS Setup**.
From the **File** menu, choose **[Exit]**. If the **AppleTalk confirmation** dialog box appears, click **[OK]** to close the dialog box.

■ FreeMIDI settings

1. **Operation of the UM-2EX** Set the UM-2EX's **ADVANCED (mode select) Switch** to the **ON** position.
2. **Operation of the UM-2EX** Connect the UM-2EX to your Macintosh.
 - * *Connect the cable to the USB connector of the Macintosh itself, not to the USB connector of the keyboard.*
 - * *This unit is equipped with a protection circuit. A brief interval (a few seconds) after connecting the UM-2EX is required before the unit will operate normally.*
3. From the CD-ROM, drag the **Driver E (Mac OS 9) - FreeMIDI Setting** folder into the **FreeMIDI Applications** folder on the hard disk of your Macintosh to copy it there.
4. Open the **FreeMIDI Applications** folder from the location into which you installed **FreeMIDI**, and double-click the **FreeMIDI Setup** icon to start it up.
When "**OMS is installed on this computer...**" appears, click [**FreeMIDI**].
5. The first time you start up, use the following procedure.
 1. A dialog box saying "**Welcome to FreeMIDI!**" will appear.
Click [**Continue**].
 2. The **FreeMIDI Preferences** dialog box will appear.
Click [**Cancel**].
 3. The **About Quick Setup** dialog box will appear.
Click [**Cancel**].
6. From the **File** menu, choose **Open**.
If you are unable to select **Open**, return to step 4 and continue the procedure.
 1. From the **File** menu, choose **FreeMIDI Preference**.
 2. Uncheck "**Use OMS when available.**"
 3. Close FreeMIDI.
7. Select **UM-2** from the **FreeMIDI Setting** folder you copied in **step 3**, and click [**Open**].
8. Verify that MIDI transmission and reception occur correctly.
From the **MIDI** menu, choose **Check Connections**.

9. The mouse cursor will change to the shape of a keyboard. Click the icon shown in the illustration. If the corresponding MIDI OUT indicator of the UM-2EX blinks, the settings have been made correctly.



10. Once again choose the **MIDI** menu command **Check Connections** to end the test.
11. From the **File** menu, choose **Quit** to exit **FreeMIDI Setup**.

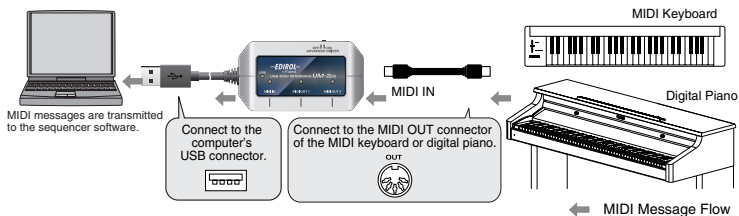
Basic Use

This chapter describes different basic methods of connecting the UM-2EX according to how the UM-2EX is to be used.

Basic Connections and MIDI Flow

Transmitting MIDI messages from a MIDI keyboard or digital piano to the sequencer software

To transmit MIDI messages from a MIDI keyboard or digital piano to the sequencer software or make a MIDI recording of a keyboard performance or other performance using sequencer software on your computer, make the following connections and settings.



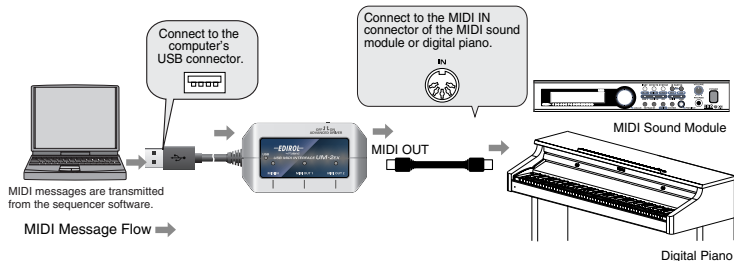
MIDI device setting

Specify **UM-2 MIDI 1** for **MIDI IN**.

* Make the device settings within the sequencer software.

Transmitting MIDI Messages from the sequencer software to a MIDI sound module or digital piano

If transmitting MIDI messages from the sequencer software to a MIDI sound module or digital piano, or if using a MIDI sound module's or digital piano's sound generator to play the sounds from the playback of sequencer software on the computer, make the following connections and settings.



MIDI device setting

If you connected your device to the MIDI OUT 1 connector, specify **UM-2 MIDI 1** for **MIDI OUT**.

If you connected your device to the MIDI OUT 2 connector, specify **UM-2 MIDI 2**.

For more on how to make the settings, refer to “**Getting Connected and Installing Drivers**” (Windows: p. 11 / Macintosh: p. 21).

* If you are using sequencer software that does not utilize Windows or Macintosh standard device settings, make the device settings within the sequencer software.

Appendices

About Standard Driver Mode

Use this mode when using the standard MIDI driver provided with the operating system.

* *Standard driver mode supports only Windows XP SP2 or later, and Mac OS X.*

If you are using Windows 98/Me/2000/XP or XP SP1, or if you are using Mac OS 9, you must turn the ADVANCED (mode select) Switch ON before you connect the UM-2EX to your computer.

Installation of the standard driver

1. With the UM-2EX left unconnected, start up your computer.

* *Disconnect all USB cables other than those for your keyboard and mouse, and restart your Macintosh.*

2. Exit all currently running software (applications).

3. Set the UM-2EX's **ADVANCE DRIVER switch (mode switch)** to **OFF**.

4. Connect the UM-2EX to the computer.

The driver is automatically installed.

* *This unit is equipped with a protection circuit. A brief interval (a few seconds) after connecting the UM-2EX is required before the unit will operate normally.*

Standard driver settings

These settings enable use of the UM-2EX with sequencer software that uses Windows or Macintosh standard device settings.

If using sequencer software that does not utilize Windows standard device settings, make the device settings within the sequencer software. For instructions on the device settings for your particular sequencer software, refer to the owner's manual that was supplied with it.

When using Windows XP

1. In accordance with Step 1 in “**Windows XP users**” (p. 18), open the **Audio** tab in the **Sounds and Audio Devices Properties** dialog box.

2. Click the ▼ for [**Default device**] in the **MIDI music playback** menu and select the **USB audio device** from the list that appears.

Depending on your computing environment, “(2)” or some other number may be added at the end of the port name.

When using Macintosh (Mac OS X)

The procedure is the same as for Advanced mode. Refer to “**Setting the driver**” (p. 23).

Troubleshooting

If you experience problems, read this chapter first. It contains tips for solving most problems.

* For details on operating your Windows or Macintosh computer, refer to the owner's manual of the computer and operating system you are using.

Problems Related to the USB Driver

Cannot install the driver correctly

Install the UM-2 driver once again as described in **Getting Connected and Installing Drivers (Windows)** (p. 11) or **Getting Connected and Installing Drivers (Macintosh)** (p. 21).

Is the UM-2EX connected correctly?

Make sure that the USB connector of your computer is connected to the UM-2EX.

Could any other USB device be connected?

Before you install, disconnect all USB devices except for your mouse and keyboard.

Could other software or resident software (such as antivirus programs) be running?

Installation may not be successful if other programs are running.

Be sure to close all other programs before installation.

Is the CD-ROM correctly inserted into your CD-ROM drive?

Installation is not possible unless the CD-ROM included with the UM-2EX is inserted in your CD-ROM drive. Make sure that the CD-ROM is correctly inserted into your CD-ROM drive.

Are you attempting to install from a networked CD-ROM drive?

You cannot install from a networked CD-ROM drive.

Is the CD-ROM or the lens of the CD-ROM drive dirty?

If the CD-ROM or the lens of the CD-ROM drive is dirty, the installer may not work correctly.

Clean the disc and/or lens using a commercially-available CD cleaner or lens cleaner.

Is your computer's power-conservation mode turned off?

If power-conservation settings are enabled on your computer, please disable any such settings. For the procedure, refer to the owner's manual of your computer.

Is there sufficient free space on your hard disk?

Delete unneeded files to increase the amount of free space. After deleting the unneeded files, empty the recycling bin.

Could the UM-2EX's ADVANCED (mode select) Switch be OFF?

Turn the UM-2EX's ADVANCED (mode select) Switch ON, restart Windows, and re-install the driver.

Does your computer or USB hub have sufficient power supply capacity?

The UM-2EX cannot be connected if insufficient power is supplied to it. Check whether one of the following cases apply.

- If you are using the UM-2EX with a notebook computer that is running on its battery, operation may be unreliable with some models of computer. If this is the case, connect the AC adaptor to your notebook computer.
- The power conservation mode of your computer may limit the power that is supplied to USB. Check the settings of your computer.
- In some cases, the UM-2EX cannot be used with a bus-powered hub (a hub that does not contain a power supply). Please use a self-powered hub (a hub that contains a power supply).

Is USB enabled on your computer?

Refer to the operation manual for your computer, and make sure that USB is enabled.

Does your computer meet the USB specifications?

If you are using a computer that does not fulfill the electrical requirements of the USB specifications, operation may be unstable. In this case, you may be able to solve the problem by connecting a USB hub.

In the Device Manager, do you see "Other device," "Unknown device," or a device for which "?", "!" or "x" is displayed? (Windows)

If the driver installation could not be successfully completed, the installed driver may remain in an incomplete state.

Re-install the driver. (→"Installing the Driver" (p. 12))

Is OMS or FreeMIDI installed? (Mac OS 9)

The UM-2 driver cannot be installed unless OMS or FreeMIDI are installed. Please install OMS or FreeMIDI.

Windows XP/2000 displays a “Hardware Installation” or “Digital Signature Not Found” dialog box

Did you make “Driver Signing Options”?

In order to install/re-install the driver, you must make the settings described in “Driver Signing Options” (p. 12).

You are asked to install the driver file even though you installed the driver (Windows)

Did you connect the UM-2EX to a different USB connector than the one you used when installing the driver?

If your computer or USB hub has two or more USB connectors, and you connect the UM-2EX to a different USB connector, you may be asked for the driver file even though the driver has already been installed in your computer. (Such a response does not indicate a malfunction.) Proceed as follows to install the driver.

1. Connect the UM-2EX to the computer.

Windows XP:

1. The **Found New Hardware Wizard** dialog box will appear.

If the message “**Connect to Windows Update to search for software?**” appears, choose “**No**” and then click [**Next**].

2. Choose “**Search for the best driver in these locations**” and click [**Next**].

If a dialog box with an “**I**” or “**x**” symbol will appear, click [**Continue Anyway**] to proceed with the installation. If you are unable to continue, click [**OK**] and repeat the driver installation.

(→“**Installing the Driver**” (p. 12))

Windows 2000:

If a dialog box indicating “**Digital Signature Not Found**” will appear, click [**Yes**] to proceed with the installation. If you are unable to continue, click [**OK**] and repeat the driver installation.

(→“**Installing the Driver**” (p. 12))

2. The **Completing the Found New Hardware Wizard** dialog box will appear.

Click [**Finish**].

3. If the **Change System Settings** dialog box appears, click [**Yes**]. Windows will restart automatically.

If you are unable to complete driver installation using the above method, repeat the driver installation. (→“**Installing the Driver**” (p. 12))

“Find new hardware wizard” does not execute automatically
“Find new hardware wizard” ends before the process is completed
“Found unknown device” appears even though you installed the driver (Windows)

Is the USB cable connected correctly?

Make sure that the UM-2EX's USB cable and your computer are correctly connected. It may take about 15seconds (or more) after the USB cable is connected.

Does your computer or USB hub have sufficient power supply capacity?

The UM-2EX cannot be connected if insufficient power is supplied to it. Check whether one of the following cases apply.

- If you are using the UM-2EX with a notebook computer that is running on its battery, operation may be unreliable with some models of computer. If this is the case, connect the AC adaptor to your notebook computer.
- The power conservation mode of your computer may limit the power that is supplied to USB. Check the settings of your computer.
- In some cases, the UM-2EX cannot be used with a bus-powered hub (a hub that does not contain a power supply). Please use a self-powered hub (a hub that contains a power supply).

Is USB enabled on your computer?

Refer to the operation manual for your computer, and make sure that USB is enabled.

Does your computer meet the USB specifications?

If you are using a computer that does not fulfill the electrical requirements of the USB specifications, operation may be unstable. In this case, you may be able to solve the problem by connecting a USB hub.

UM-2EX is not detected when making OMS or FreeMIDI settings (Mac OS 9 users)

Is the UM-2EX detected?

- Reconnect the UM-2EX.
- If other USB devices are connected, connect only the UM-2EX.
- It is possible that the Macintosh did not correctly detect and initialize the UM-2EX. Leave the UM-2EX connected, and restart your Macintosh. If it is still not detected, shut down your Macintosh, and then restart it.
- In some cases, the UM-2EX will not be detected if you have connected it to the USB connector located on the keyboard of the Macintosh. Please connect it to a USB connector on the Macintosh itself.

Deleting the Driver

If you were unable to install the driver according to the procedure given, the UM-2EX may not be recognized correctly by the computer. In this case, use the following procedure to delete the driver, and then follow the procedure to install the driver once again.

Windows users

1. Start up Windows with the UM-2EX disconnected.
Disconnect all USB cables other than a USB keyboard or USB mouse.

* *If you are using Windows XP Professional/2000, log on as a user that has administrative privileges (e.g., Administrator).*

2. Insert the CD-ROM into the CD-ROM drive of your computer.
3. From the Windows **Start** menu, choose "**Run....**"
In the Run dialog box, input the following into the **Open** field, and click **[OK]**.

Windows XP/2000 users: **D:\Driver\XP2k\Uninstal.exe**
Windows Me/98 users: **D:\Driver\Me98\Uninstal.exe**

* *The drive name is "D:" in the example shown here, but may be different on your system. Use the drive name for your CD-ROM drive.*

4. Follow the on-screen instructions to uninstall the driver.

Macintosh (Mac OS X) users

1. Start up Macintosh with the UM-2EX disconnected.
Disconnect all USB cables other than a USB keyboard or USB mouse.
2. Prepare the CD-ROM.
Insert the CD-ROM into the CD-ROM drive of your Macintosh.
3. In the **Driver (Mac OS X)** folder of the CD-ROM, double-click “**UM2_Uninstaller.**”
4. The display will indicate “**This uninstalls EDIROL UM-2 driver from this Macintosh.**”; click [**Uninstall**].
If any other message appears, proceed as directed by that message.
5. The display will indicate “**Are you sure to uninstall the driver?**”; click [**OK**].
6. The “**Authenticate**” dialog box will appear; enter the password and click [**OK**].
7. The display will indicate “**Uninstllation is completed.**”; click [**Restart**]. Your Macintosh will then restart.

Macintosh (Mac OS 9) users

1. Start up Macintosh with the UM-2EX disconnected.
Disconnect all USB cables other than a USB keyboard or USB mouse.
2. From the **system extensions folder** inside the **System folder**, drag “**USB UM-2 Driver**” into the trash to delete it.
3. Delete **UM-2** from the **OMS Folder** inside the **System folder**, or drag **UM-2 Driver** from the **FreeMIDI Folder** inside the **System folder** to the trash.
4. Restart the Macintosh.

Problems When Using the UM-2EX

Sound is interrupted during MIDI playback

In Windows, did you make the setting described in “Giving priority to background services”?

In order to ensure that MIDI processing occurs smoothly, make the setting described in **Giving priority to Background Services**. (→Windows XP (p. 15) / Windows 2000 (p. 16))

Did you plug in the USB cable, or unplug it while a software was running?

Exit all software that are using the UM-2EX, and re-connect the UM-2EX.

Is your computer in Suspend or Sleep mode?

If so, get your computer to resume normal operation, then exit all software that are using the UM-2EX. Next re-connect the UM-2EX.

Are you running multiple software?

If multiple software are running simultaneously, an error message may appear. If this occurs, click **[OK]** and exit the other software.

Even if an software window is closed, it is still running if it appears in the taskbar. Be sure to exit unneeded software displayed.

Playback or recording halts midway through, and then becomes impossible

Was a heavy processing load experienced while using the UM-2EX, such as accessing the CD-ROM drive or a network?

If an operation involving a heavy processing load is performed while the UM-2EX is in use, it may not operate correctly. If this occurs, stop playback/recording, and then try resuming playback/recording. If you are still unable to play back/record, exit all software that use the UM-2EX, disconnect the UM-2EX from the computer and then reconnect it.

Operating system becomes unstable

Operation becomes unstable when the computer is started up with the UM-2EX already connected

Please start up your computer with the UM-2EX disconnected, and then connect the UM-2EX. On a computer that uses a USB keyboard, starting up the computer with the UM-2EX already connected may cause operation to become unstable. In this case, start up the computer with the UM-2EX disconnected, and then connect the UM-2EX.

Main Specifications

■ UM-2EX: USB MIDI Interface

Controllers

ADVANCED switch

Connectors

MIDI IN Cable x 1 (16 MIDI Channels)
MIDI OUT Cable x 2 (16 MIDI Channels x 2)
USB Cable

Power Supply

Supplied from the computer

Current Draw

70 mA

Dimensions

81 (W) x 47 (D) x 28 (H) mm
3-3/16 (W) x 1-7/8 (D) x 1-1/8 (H) inches

Weight

110 g / 4 oz

Accessories

Owner's Manual
CD-ROM

** In the interest of product improvement, the specifications, appearance, and/or contents of this unit are subject to change without prior notice.*

Treiber installieren

Schritte, die am UM-2EX selbst durchgeführt werden müssen, sind mit einem **Operation of the UM-2EX** Symbol gekennzeichnet.

Windows XP/2000-Anwender

1. Starten Sie Windows, das UM-2EX ist dabei nicht angeschlossen. Schließen Sie das UM-2EX erst an den Computer an, wenn Sie Schritt 13 erreicht haben (S. 47).
 - * Entfernen Sie sämtliche USB-Kabel außer denen der USB-Tastatur und der USB-Maus (falls vorhanden).
 - * Melden Sie sich in Windows mit einem Benutzernamen an, der über Administrationsrechte verfügt (beispielsweise Administrator).
2. Öffnen Sie das Dialogfeld **Systemeigenschaften**.

Windows XP:

1. Klicken Sie auf das Windows-**Start**-Menü und wählen Sie im Folgemenu **Systemsteuerung**.
2. Klicken Sie in **“Wählen Sie eine Kategorie”** auf **“Leistung und Wartung”**.
3. Klicken Sie in **“oder wählen Sie ein Systemsteuerungssymbol”** auf das Symbol **System**. Je nach Einstellung wird das Symbol **System** manchmal direkt in der klassischen Ansicht der **Systemsteuerung** angezeigt. Wenn das der Fall ist, klicken Sie auf das Symbol **System**.

Windows 2000:

1. Klicken Sie auf das Windows-**Start**-Menü und wählen Sie im Folgemenu **Systemsteuerung**.
2. Doppelklicken Sie auf das **System**-Symbol in **Systemsteuerung**.
3. Klicken Sie auf den Reiter **Hardware** und dann auf **[Treibersignatur]**. Daraufhin werden die **Treibersignaturoptionen** angezeigt.
4. Wählen Sie im Dialogfeld **Treibersignaturoptionen** die Option **“Ignorieren”**, und klicken Sie danach auf **[OK]**. Wenn aktuell **“Warnen”** oder **“Sperrern”** gewählt ist, ändern Sie diese Einstellung auf **“Ignorieren”**. Stellen Sie nach der Installation des Treibers die ursprüngliche Einstellung wieder her.
5. Klicken Sie auf **[OK]** zum Schließen des Dialogfelds **Systemeigenschaften**.
6. Beenden Sie alle aktuell ausgeführten Programme (Anwendungen). Schließen Sie außerdem alle noch geöffneten Programmfenster. Wenn Sie eine Anti-Virus- oder ähnliche Software benutzen, müssen Sie diese Programme ebenfalls beenden.

7. Halten Sie die CD-ROM bereit und legen Sie sie in das CD-ROM-Laufwerk ein.

* Wenn die Meldung **“Windows kann jedes Mal, wenn Sie eine Diskette einlegen oder ein Gerät mit dieser Dateart anschließen, die gleiche Aktion ausführen”** angezeigt wird, klicken Sie auf **[Abbrechen]**.

8. Wählen Sie **“Ausführen...”** aus dem Windows-**Start**-Menü.

9. Geben Sie Folgendes in das **Öffnen**-Feld des Dialogfeldes **“Ausführen...”** ein und klicken Sie auf **[OK]**.

D: \Driver\XP2k\setup.exe

* Der Name des Laufwerks ist **“D:”** in dem hier gezeigten Beispiel, er kann aber auf Ihrem System anders lauten. Geben Sie den Laufwerknamen Ihres CD-ROM-Laufwerks an.

10. Daraufhin wird die Dialogbox **Treiber-Setup** angezeigt.

Klicken Sie auf **[Weiter]**.

11. Um die Installation zu beginnen, klicken Sie noch einmal auf **[Weiter]**. Die Installation beginnt dann.

Windows XP:

Wenn die **“Treibersignaturoptionen”** in Schritt 4 auf etwas anderes als **“Ignorieren”** eingestellt wurden, erscheint ein **“!**” oder ein **“x”** Symbol. Wenn **[Installation fortsetzen]** angezeigt wird, klicken Sie auf **[Installation fortsetzen]**. Wenn Sie die Installation nicht fortsetzen können, klicken Sie auf **[OK]** und wiederholen die Treiberinstallation ab Schritt 1.

Windows 2000:

Wenn die **“Treibersignaturoptionen”** in Schritt 4 auf etwas anderes als **“Ignorieren”** eingestellt wurden, erscheint die Meldung **“Digitale Signatur nicht gefunden”**. Wenn **[Ja]** angezeigt wird, klicken Sie auf **[Ja]**, um die Installation fortzusetzen. Wenn Sie die Installation nicht fortsetzen können, klicken Sie auf **[OK]** und wiederholen die Treiberinstallation ab Schritt 1.

Das Dialogfeld **“Setup is now ready to install the drivers”** erscheint.
Jetzt kann der Treiber installiert werden.

12. **Operation of the UM-2EX:** Stellen Sie den **ADVANCED (mode select) Switch** des UM-2EX in die Position **ON**.

* Der Treiber kann gemäß der folgenden Anleitung nicht installiert werden, wenn der Schalter auf **OFF** steht.

Wenn Sie Windows 98 / Me / 2000 / XP oder XP SP1 verwenden, müssen Sie den Auswahlschalter **ADVANCED (mode select) auf **ON** stellen, bevor Sie das UM-2EX an Ihren Computer anschließen.**

13. Operation of the UM-2EX Schließen Sie das UM-2EX an Ihren Computer an.

Die Meldung **“Neue Hardware gefunden”** wird angezeigt. Bitte warten Sie.

- * *Dieses Gerät ist mit einem Schutzschaltkreis ausgestattet. Nach dem Anschluss benötigt das UM-2EX eine kurze Zeitspanne von einigen Sekunden, bis es den normalen Betrieb aufnimmt.*

Windows XP:

1. Der **Assistent Neue Hardware gefunden** erscheint. Wenn die Meldung **“Mit Windows Update verbinden, um neue Software zu suchen?”** erscheint, wählen Sie **“Nein”** und klicken dann auf **[Weiter]**.
2. Stellen Sie sicher, dass **“EDIROL UM-2”** angezeigt wird. Wählen Sie danach **“Nach dem besten Treiber für diese Quelle suchen”** und klicken Sie auf **[Weiter]**.

- * *Wenn die **“Treibersignaturoptionen”** in Schritt 4 auf etwas anderes als **“Ignorieren”** eingestellt wurden, erscheint ein **“!** Symbol. Klicken Sie auf **[Installation fortsetzen]**, um die Installation fortzusetzen.*

Windows 2000:

Wenn die **“Treibersignaturoptionen”** in Schritt 4 auf etwas anderes als **“Ignorieren”** eingestellt wurden, erscheint die Meldung **“Digitale Signatur nicht gefunden”**. Klicken Sie auf **[Ja]**, um die Installation fortzusetzen.

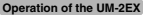
14. Es erscheint die Dialogbox **Abschließen der Installation neuer Hardware**.
Klicken Sie auf **[Fertig stellen]**.
15. Klicken Sie in der Dialogbox **Treiber-Setup** auf **[Schließen]**.
Dies schließt die Treiberinstallation ab.

Wenn die Dialogbox **Systemeigenschaften ändern** erscheint, klicken Sie auf **[Ja]**. Windows startet automatisch neu.

- * *Wenn Sie die Einstellungen der **“Treibersignaturoptionen”** geändert haben (Schritt 4 auf S. 45), stellen Sie wieder die ursprünglichen Einstellungen her, nachdem Windows neu gestartet hat.*

Anschlüsse herstellen und Treiber installieren (Macintosh)

Treiberinstallation und Einstellung

Schritte, die am UM-2EX selbst durchgeführt werden müssen, sind mit einem  Symbol gekennzeichnet.

Mac OS X-Anwender

■ Installation des Treibers

- * Geben Sie in das eventuell erscheinende Dialogfeld **“Authenticate”** (Authentifizierung) das Kennwort ein und klicken Sie auf **[OK]**.
- * Die aktuelle Anzeige auf Ihrem Macintosh-Bildschirm kann anders aussehen und hängt davon ab, welchen Computer und welches Betriebssystem Sie nutzen.
- 1. Starten Sie Ihren Macintosh, das UM-2EX ist dabei nicht angeschlossen.
- * Lösen Sie alle USB-Kabel außer der USB-Tastatur und der USB-Maus von Ihrem Computer und starten Sie den Macintosh neu.
- 2. Beenden Sie alle aktuell ausgeführten Programme (Anwendungen).
- 3. Halten Sie die CD-ROM bereit und legen Sie sie in das CD-ROM-Laufwerk Ihres Macintosh ein.
- 4. Doppelklicken Sie im Ordner **Driver (Mac OS X)** auf der CD-ROM auf **UM2USBDriver.pkg**. Es kann eine Mitteilung wie **“This Installer package needs to...”** erscheinen. Klicken Sie auf **“Continue”**.
- 5. In der Anzeige erscheint **“Welcome to the EDIROL UM-2Driver Installer”**. Klicken Sie auf **[Continue]**.
- 6. In der Anzeige erscheint **“Select a Destination”**. Wählen Sie mit einem Mausklick das Laufwerk aus, auf dem das Betriebssystem installiert ist, und klicken Sie dann auf **[Continue]**.
 - * Wählen Sie Ihre Bootfestplatte als Laufwerk.
- 7. In der Anzeige erscheint **“Easy Install”**. Klicken Sie auf **[Install]** oder **[Upgrade]**.
- 8. In der Anzeige erscheint **“Installing this software requires you to restart your computer when the installation is done”** (Neustart nach Installation erforderlich). Klicken Sie auf **[Continue Installation]**.
- 9. In der Anzeige erscheint **“The software was successfully installed”** (Die Software wurde erfolgreich installiert). Klicken Sie auf **[Restart]**, um Ihren Macintosh neu zu starten.

Damit ist die Installation des UM-2-Treibers abgeschlossen. Als nächstes nehmen Sie MIDI-Geräteeinstellungen vor. (**“Konfiguration des Treibers”** (S. 49))

■ Konfiguration des Treibers

Im Folgenden werden die Einstellungen beschrieben, mit denen das UM-2EX mit Sequenzer-Software auf Basis der Macintosh Standardgeräteeinstellungen betrieben werden kann. Wenn Sie eine Sequenzer-Software nutzen, die keine Macintosh Standardgeräteeinstellungen unterstützt, nehmen Sie die Geräteeinstellungen in der Sequenzer-Software vor.

* Die aktuelle Anzeige auf Ihrem Macintosh-Bildschirm kann anders aussehen und hängt davon ab, welchen Computer und welches Betriebssystem Sie nutzen.

1. Operation of the UM-2EX Bringen Sie den **ADVANCED (mode select) Switch** des UM-2EX in die Position **ON**.

2. Operation of the UM-2EX Schließen Sie das UM-2EX an Ihren Macintosh an.

* Verbinden Sie das Kabel mit dem **USB-Anschluss** direkt mit dem Macintosh, nicht mit der USB-Buchse der Tastatur.

* Dieses Gerät ist mit einem **Schutzschaltkreis** ausgestattet. Nach dem Anschluss benötigt das UM-2EX eine kurze Zeitspanne von einigen Sekunden, bis es den normalen Betrieb aufnimmt.

3. Öffnen Sie den Ordner **Applications** (Anwendungen) auf der Festplatte Ihres Macintosh. Doppelklicken Sie **Audio MIDI Setup** im Ordner **Utilities** (Dienstprogramme) um die Dialogbox **Audio MIDI Setup** zu öffnen.



4. Klicken Sie auf die Registerkarte **MIDI-Devices**.

5. Stellen sie sicher, dass **UM-2** in der Dialogbox **Audio MIDI Setup** erscheint.

* Wenn **UM-2** nicht oder grau erscheint, wurde das UM-2EX nicht korrekt erkannt. Klicken Sie auf **Rescan MIDI**. Trennen Sie das UM-2EX und schließen Sie es erneut an, um den Fehler zu beheben.

* Frühere Einstellungen zur Installation einer anderen Treiberversion können noch vorhanden sein. Sollte dies der Fall sein, klicken Sie auf das graue **UM-2** oder **EDIROL UM-2**, um es auszuwählen und klicken danach auf **Remove Selected Device**, um die Einstellungen zu löschen.

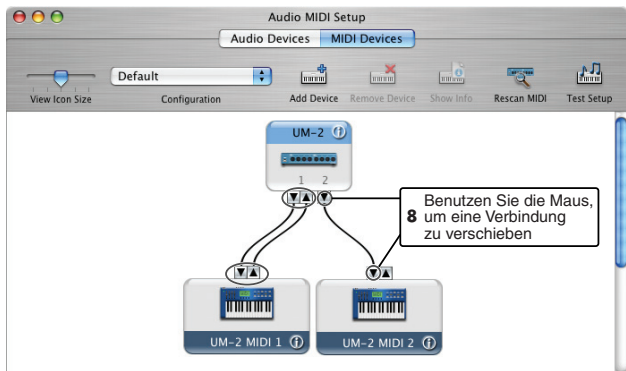
6. Doppelklicken sie auf **Add Device**.
Zwei **new external device** erscheint.

7. Geben Sie **Device Name** ein.

1. Wenn **new external device** gewählt ist, klicken Sie auf **Show Info**.
2. Geben Sie den Namen in dem Feld **Device Name** ein.



8. Verbinden Sie die Symbole für die Aus- und Eingänge ▼ und ▲ des **UM-2**-Symbols mit denen des Symbols **new external device** durch Ziehen (Drag) mit der Maus.



9. Bei Betriebssystem **Mac OS X v10.2 oder früher:**

Schließen Sie die Dialogbox **Audio MIDI Setup**. Die Einstellungen sind damit abgeschlossen. Bei Betriebssystem **Mac OS X v10.3 oder später:**

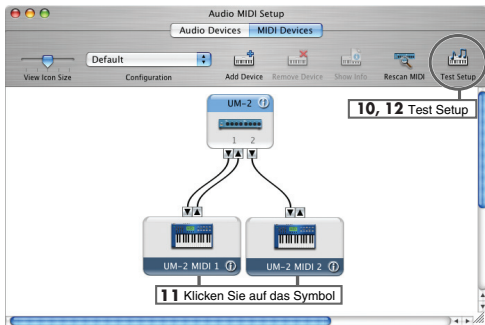
Bestätigen Sie, dass MIDI übertragen und korrekt empfangen wurde. Schritte 10 - 13 (S. 51) durchführen.

10. Klicken Sie auf Test Setup.

Die Form des Maus-Cursors ändert sich 🎵.

11. Klicken Sie auf den in der Illustration dargestellten Bereich.
Wenn die entsprechende MIDI OUT-Anzeige des UM-2EX blinkt, wurden die Einstellungen korrekt vorgenommen.

12. Klicken Sie auf Test Setup und schließen Sie die Bestätigung ab.



13. Schließen Sie die Dialogbox Audio MIDI Setup.

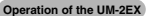
Bei Verwendung des UM-2EX mit Ihrer Sequenzer-Software

Bitte lesen Sie die folgenden Punkte, bevor Sie das UM-2EX mit Ihrer Sequenzer-Software verwenden.

- Schließen Sie das UM-2EX an Ihren Macintosh an, bevor Sie Ihre Sequenzer-Software starten.
- Trennen Sie das UM-2EX während des laufenden Betriebs Ihrer Sequenzer-Software nicht von Ihrem Macintosh. Beenden Sie Ihre Sequenzer-Software, bevor Sie das UM-2EX von Ihrem Macintosh trennen.
- Das UM-2EX funktioniert nicht in der Mac OS X Classic-Umgebung. Verwenden Sie das UM-2EX, wenn die Classic-Umgebung nicht ausgeführt wird.

Connexion et installation des pilotes (Windows)

Installation du pilote

Les opérations à effectuer sur l'UM-2EX sont signalées par le symbole  .

Windows XP/2000

1. L'UM-2EX étant déconnecté, démarrer Windows.

Ne pas brancher l'UM-2EX sur l'ordinateur avant le point 13 (p. 54).

* *Débrancher tous les câbles USB, à l'exception de ceux du clavier et de la souris (le cas échéant).*

* *Ouvrir une session Windows en tant qu'utilisateur doté de droits d'administration (Administrateur, par exemple).*

2. Ouvrir la boîte de dialogue **Propriétés système**.

Windows XP:

1. Cliquer sur le bouton **Démarrer (Start)** de Windows et sélectionner **Panneau de configuration** dans le menu.
2. Dans "**Choisissez une catégorie**", cliquer sur "**Performances et maintenance**".
3. Dans "**ou choisissez une icône du Panneau de configuration**", cliquer sur l'icône **Système**. Selon la configuration de l'ordinateur, l'icône **Système** peut s'afficher directement dans le **Panneau de configuration** (Vue classique). Dans ce cas, double-cliquer sur l'icône **Système**.

Windows 2000:

1. Cliquer sur le menu **Démarrer** de Windows et sélectionner **Paramètres | Panneau de configuration** dans le menu qui s'affiche.
2. Dans le **Panneau de configuration**, double-cliquer sur l'icône **Système**.
3. Cliquer sur l'onglet **Matériel**, puis cliquer sur **[Signature du pilote]**. La boîte de dialogue **Options de signature du pilote** s'affiche.
4. Dans la boîte de dialogue **Options de signature du pilote**, sélectionner "**Ignorer**" et cliquer sur **[OK]**.
Si le paramètre actuel est "Avertir" ou "Bloquer", le remplacer par "**Ignorer**". Rétablir le paramètre précédent après installation du pilote.
5. Cliquer sur **[OK]** pour fermer la boîte de dialogue **Propriétés système**.
6. Fermer tous les logiciels (applications) actifs.
Fermer également toutes les fenêtres éventuellement ouvertes. Tout programme de type antivirus, etc., en cours d'exécution doit être fermé également.

7. Prendre le CD-ROM et l'introduire dans le lecteur de l'ordinateur.
- * Si le message **"Windows peut effectuer la même action à chaque fois que vous insérez un disque ou connectez un périphérique avec ce type de fichier"** s'affiche, cliquer sur **[Annuler]**.
8. Cliquer sur le bouton **Démarrer** de Windows et sélectionner l'option **Exécuter...**
9. Dans le champ **Ouvrir** de la boîte de dialogue **"Exécuter..."**, saisir le chemin d'accès suivant et cliquer sur **[OK]**.
D: \Driver\XP2k\setup.exe
- * Dans notre exemple, il s'agit de la lettre **"D:"**, mais le nom du lecteur peut varier d'un système à l'autre. Saisir la lettre affectée au lecteur utilisé.
10. La boîte de dialogue **Driver setup** (paramétrage du pilote) s'affiche.
Cliquer sur **[Suivant]**.
11. Cliquer une nouvelle fois sur **[Suivant]** pour lancer l'installation. L'installation commence.

Windows XP:

Si le paramètre **"Options de signature du pilote"** (point 4) est autre que **"Ignorer"**, une boîte de dialogue comportant le symbole **"I"** ou **"X"** s'affiche. Si le bouton **[Continuer]** est présent, il suffit de cliquer sur celui-ci pour poursuivre l'installation. Dans le cas contraire, cliquer sur **[OK]** et reprendre l'installation du pilote à partir du point 1.

Windows 2000:

Si le paramètre **"Options de signature du pilote"** (point 4) est autre que **"Ignorer"**, une boîte de dialogue comportant le message **"Signature numérique introuvable"** s'affiche. Si le bouton **[Yes]** est présent, cliquer sur celui-ci pour poursuivre l'installation. Dans le cas contraire, cliquer sur **[OK]** et reprendre l'installation du pilote à partir du point 1.

La boîte de dialogue **"Setup is now ready to install the drivers"** (installation des pilotes prête à démarrer) s'affiche.
Le moment est venu d'installer le pilote.

12. **Operation of the UM-2EX:** Mettre le commutateur **ADVANCED (mode select) Switch** de l'UM-2EX sur **ON**.
- * L'installation du pilote selon la marche à suivre ci-après est impossible si le commutateur est en position **"OFF"**.

Si le système d'exploitation utilisé est Windows 98 / Me / 2000 / XP ou XP SP1, il faut impérativement mettre le commutateur "ADVANCED (mode select)" sur la position "ON" avant de brancher le UM-2EX sur l'ordinateur.

13. Operation of the UM-2EX Raccorder l'UM-2EX à l'ordinateur.

Le message "**Nouveau matériel détecté**" s'affiche. Veuillez patienter.

- * *Cet appareil est équipé d'un circuit de protection. Une fois l'UM-2EX raccordé à l'ordinateur, laissez s'écouler quelques secondes avant de l'utiliser.*

Windows XP:

1. La boîte de dialogue **Nouveau matériel détecté** s'affiche.

Si le message "**Connect to Windows Update to search for software?**" s'affiche, sélectionner "**No**" et cliquer sur **[Suivant]**.

2. S'assurer que la mention "**EDIROL UM-2**" est présente. Sélectionner alors l'option "**Search for the best driver in these locations**" et cliquer sur **[Next]**.

- * *Si le paramètre "**Options de signature du pilote**" (point 4) est autre que "**Ignorer**", une boîte de dialogue comportant le symbole "**!**" s'affiche. Cliquer sur **[Continuer]** pour poursuivre l'installation.*

Windows 2000:

Si le paramètre "**Options de signature du pilote**" (point 4) est autre que "**Ignorer**", une boîte de dialogue comportant le message "**Signature numérique introuvable**" s'affiche. Cliquer sur **[Yes]** pour poursuivre l'installation.

14. La boîte de dialogue **Completing the found new hardware wizard** (fin Assistant nouveau matériel) s'affiche.

Cliquer sur **[Terminer]**.


15. Dans la boîte de dialogue **Driver setup** (paramétrage du pilote), cliquer sur **[Close]**.

L'installation du pilote est alors terminée.

Si la boîte de dialogue "**Change System Settings**" (modification des paramètres système) s'affiche, cliquer sur **[Yes]**. Windows redémarre automatiquement.

- * *Si l'on a modifié les **options de signature du pilote** ("**Driver Signing Options**") (point 4, p. 52), rétablir la configuration d'origine après redémarrage de Windows.*

Installation et configuration du pilote

Les opérations à effectuer sur l'UM-2EX sont signalées par le symbole  .

Mac OS X

■ Installation du pilote

- * Si la boîte de dialogue **“Authenticate”** s'affiche pendant l'installation, introduire le mot de passe et cliquer sur **“OK”**.
- * Les données affichées à l'écran peuvent varier selon les types d'ordinateur et de système d'exploitation utilisés.
- 1. L'UM-2EX étant déconnecté, démarrer Windows.
 - * Débrancher tous les câbles USB, à l'exception de ceux du clavier et de la souris, puis redémarrer l'ordinateur.
- 2. Fermer tous les logiciels (applications) actifs.
- 3. Prendre le CD-ROM et l'introduire dans le lecteur de l'ordinateur.
- 4. Dans le dossier **Driver (Mac OS X)** du CD-ROM, double-cliquer sur **UM2USBDriver.pkg**. Un message du genre **“This installer package needs to...”** s'affiche éventuellement. Cliquer sur **“Continue”**.
- 5. Le message **“Welcome to the EDIROL UM-2Driver Installer”** s'affiche. Cliquer sur **[Continue]**.
- 6. Le message **“Select a Destination”** (sélectionner l'emplacement d'installation) s'affiche. Sélectionner le disque dur sur lequel est installé le système d'exploitation, puis cliquer sur **[Continue]**.
 - * (Le disque à sélectionner est le disque de démarrage.)
- 7. Le message **“Easy Install”** s'affiche. Cliquer sur **[Install]** ou **[Upgrade]**.
- 8. Le message **“Installing this software requires you to restart your computer when the installation is done”** (redémarrer l'ordinateur à la fin de l'installation) s'affiche. Cliquer sur **[Continue installation]**.
- 9. Le message **“The software was successfully installed”** (installation terminée) s'affiche. Cliquer sur **[Restart]** pour redémarrer l'ordinateur.

L'installation du pilote l'UM-2 est terminée.

Procéder ensuite au paramétrage du périphérique MIDI. (→ **“Configuration du pilote”** (p. 56))

■ Configuration du pilote

Configuration de l'UM-2EX pour une utilisation avec un séquenceur logiciel et un paramétrage Macintosh standard.

Si le séquenceur n'exploite pas les paramètres Macintosh standard, le paramétrage doit être fait dans le séquenceur.

* Les données affichées à l'écran peuvent varier selon les types d'ordinateur et de système d'exploitation utilisés.

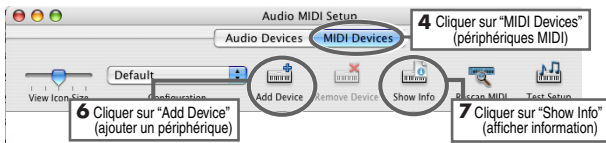
1. **Operation of the UM-2EX** Mettre le commutateur **ADVANCED (mode select) Switch** de l'UM-2EX sur la position **ON**.

2. **Operation of the UM-2EX** Raccorder l'UM-2EX à l'ordinateur.

* Brancher le câble sur le connecteur USB du Macintosh lui-même, et non sur celui du clavier.

* Cet appareil est équipé d'un circuit de protection. Une fois l'UM-2EX raccordé à l'ordinateur, laisser s'écouler quelques secondes avant de l'utiliser.

3. Ouvrir le dossier **Applications** du disque dur du Macintosh. Dans le dossier **Utilities**, double-cliquer sur **Audio MIDI Setup** pour ouvrir la boîte de dialogue **Audio MIDI Setup**.



4. Cliquer sur l'onglet **MIDI Devices**.

5. S'assurer que la mention **UM-2** figure dans la boîte de dialogue **Audio MIDI Setup**.

* Dans le cas contraire (mention **UM-2** non présente ou apparaissant en grisé), l'UM-2EX n'est pas correctement reconnu par l'ordinateur. Cliquer sur **Rescan MIDI**. On peut aussi débrancher, puis rebrancher l'UM-2EX sur l'ordinateur.

* Un paramétrage remontant à l'installation d'une version différente du pilote peut demeurer. Si c'est le cas, sélectionner la mention **UM-2** ou **EDIROL UM-2** apparaissant en grisé, puis cliquer sur **Remove Selected Device** pour supprimer ce paramétrage.

6. Double-cliquer sur **Add Device**.

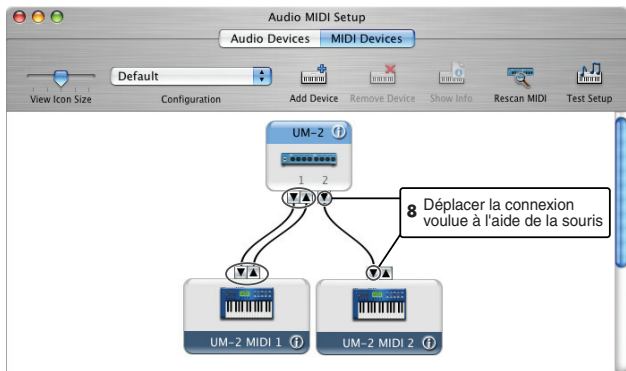
Deux icônes **new external device** s'affichent.

7. Paramétrage système.


1. **new external device** étant sélectionné, cliquer sur **Show Info**.
2. Saisir l'intitulé dans le champ **Device Name**.



8. À l'aide de la souris, relier les symboles ▼ et ▲ (qui correspondent aux sorties et entrées) de l'icône **UM-2** aux symboles correspondants de l'icône **new External Device**.

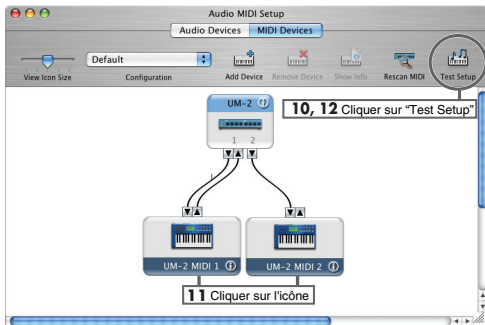


9. Si le système d'exploitation utilisé est **Mac OS X v10.2 ou une version antérieure**: Fermer la boîte de dialogue **Audio MIDI Setup**. Le paramétrage est terminé.
Si le système d'exploitation est **Mac OS X v10.3 ou une version ultérieure**: S'assurer que l'émission et la réception des signaux MIDI se fait correctement. Exécuter les étapes 10 à 13 (p. 58).

10. Cliquer sur **Test Setup**.
Le curseur de la souris change de forme .

11. Cliquer sur la zone indiquée dans l'illustration. Si le témoin MIDI OUT correspondant de l'UM-2EX clignote, cela veut dire que le paramétrage est correct.

12. Cliquer sur **Test Setup** et terminer la confirmation.



13. Fermer la boîte de dialogue **Audio MIDI Setup**.

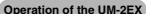
Utilisation de l'UM-2EX avec le séquenceur logiciel

Avant d'utiliser l'UM-2EX avec un séquenceur logiciel, prendre en compte les points suivants.

- Raccorder l'UM-2EX à l'ordinateur avant de lancer le logiciel.
- Ne pas déconnecter l'UM-2EX pendant que le logiciel fonctionne. Fermer le logiciel avant de déconnecter l'UM-2EX.
- L'UM-2EX ne fonctionne pas sous l'environnement "Classic" de Mac OS X. Il convient donc de ne l'utiliser que lorsque l'environnement "Classic" est inactif.

Collegamento e installazione dei driver (Windows)

Installazione del driver

I passi da eseguire sull'UM-2EX stesso sono indicati con il simbolo  .

Utenti Windows XP/2000

1. Avviare Windows con l'UM-2EX scollegato.
Non collegare l'UM-2EX al computer fino al passo 13 (p. 61).
** Scollegare tutti i cavi USB, ad eccezione della tastiera e del mouse USB, se utilizzati.*
** Accedere a Windows utilizzando un nome utente con privilegi amministrativi, ad esempio Administrator.*
2. Aprire la finestra di dialogo **Proprietà del sistema**.

Windows XP:

1. Dal menu di **avvio** di Windows scegliere **Pannello di controllo**.
2. In **"Scegliere una categoria"** fare clic su **"Prestazioni e manutenzione"**.
3. In **"o un'icona del Pannello di controllo"** fare clic sull'icona **Sistema**.
A seconda della configurazione del sistema, l'icona **Sistema** potrebbe essere visualizzata direttamente nel **Pannello di controllo** (visualizzazione classica). In questo caso, fare doppio clic sull'icona **Sistema**.

Windows 2000:

1. Dal menu di **avvio** di Windows scegliere **Impostazioni** | **Pannello di controllo**.
2. In **Pannello di controllo** fare doppio clic sull'icona **Sistema**.
3. Fare clic sulla scheda **Hardware** e quindi su **[Firma driver]**.
Verrà visualizzata la finestra di dialogo **Opzioni firma driver**.
4. Nella finestra di dialogo **Opzioni firma driver**, selezionare l'opzione **"Ignora"**, poi fare clic su **[OK]**.
Se l'impostazione corrente è "Avvisa" o "Blocca," modificarla su **"Ignora"**. Al termine dell'installazione del driver, ripristinare l'impostazione originale.
5. Fare clic su **[OK]** per chiudere la finestra di dialogo **Proprietà del sistema**.
6. Chiudere tutti i programmi in esecuzione.
Chiudere inoltre tutte le finestre aperte. Se si utilizza un antivirus o un programma simile, chiuderlo.

7. Preparare il CD-ROM.

Inserire il CD-ROM nell'apposita unità del computer.

* *Se viene visualizzato il messaggio “È possibile eseguire la stessa operazione ogni volta che si inserisce un disco o che si connette una periferica con il seguente tipo di file” fare clic su [Annulla].*

8. Scegliere **Esegui...** dal menu di **avvio** di Windows.

9. Nel campo **Apri** della finestra di dialogo “**Esegui...**” immettere la seguente stringa e quindi fare clic su **[OK]**.

D: \Driver\XP2k\setup.exe

* *L'identificativo dell'unità è “D:” nell'esempio riportato qui, ma potrebbe essere diverso sul sistema utilizzato. Utilizzare la lettera corrispondente all'unità CD-ROM in uso.*

10. Verrà visualizzata la finestra di dialogo **Installazione driver**.

Fare clic su **[Avanti]**.

11. Per avviare l'installazione, fare di nuovo clic su **[Avanti]** L'installazione avrà inizio.

Windows XP:

Se “**Opzioni firma driver**” al passo 4 è impostato su “**Ignora**” verrà visualizzata una finestra di dialogo con il simbolo “**I**” o “**X**” Se viene visualizzato un pulsante **[Continua]**, fare clic su **[Continua]** per procedere con l'installazione. Se non è possibile continuare, fare clic su **[OK]** e ripetere l'installazione del driver dal passo 1.

Windows 2000:

Se “**Opzioni firma driver**” al passo 4 è impostato su “**Ignora**” verrà visualizzata la finestra di dialogo “**Firma digitale non trovata**”. Se viene visualizzato un pulsante **[Sì]**, fare clic su **[Sì]** per procedere con l'installazione. Se non è possibile continuare, fare clic su **[OK]** e ripetere l'installazione del driver dal passo 1.

Verrà visualizzata la finestra di dialogo “**Setup is now ready to install the drivers**”.

Ora è possibile installare il driver.

12. **Operation of the UM-2EX** Spostare l'**ADVANCED (mode select) Switch** dell'UM-2EX sulla posizione **ON**.

* *Il driver non può essere installato seguendo la procedura sotto indicata se l'interruttore è impostato su OFF.*

Se si utilizza Windows 98/Me/2000/XP o XP SP1, è necessario impostare l'interruttore **ADVANCED** (selezione del modo) in posizione **ON** prima di collegare l'UM-2EX al computer.

13. Operation of the UM-2EX Collegare l'UM-2EX al computer.

Viene visualizzato il messaggio “**Installazione guidata nuovo hardware**”. Attendere qualche minuto.

* *Questo apparecchio è provvisto di un circuito di protezione. È necessario attendere qualche secondo dopo aver collegato l'UM-2EX prima che l'apparecchio funzioni normalmente.*

Windows XP:**1.** Appare la finestra di dialogo **Installazione guidata nuovo hardware**.

Se viene visualizzato il messaggio “**Consentire la connessione a Windows Update per la ricerca di software?**”, scegliere “**No**” e quindi fare clic su **[Avanti]**.

2. Verificare che “**EDIROL UM-2**” sia visualizzato, quindi scegliere “**Ricerca il miglior driver disponibile in questi percorsi**” e fare clic su **[Avanti]**.

* Se “**Opzioni firma driver**” al passo 4 è impostato su “**Ignora**” verrà visualizzata una finestra di dialogo con il simbolo “**!**”. Fare clic su **[Continua]** per procedere con l'installazione.

Windows 2000:

Se “**Opzioni firma driver**” al passo 4 è impostato su “**Ignora**” verrà visualizzata la finestra di dialogo “**Firma digitale non trovata**”. Fare clic su **[Sì]** per procedere con l'installazione.

14. Verrà visualizzata la finestra di dialogo **Completamento dell'Installazione guidata nuovo hardware in corso**.

Fare clic su **[Fine]**.

15. Nella finestra di dialogo **Installazione driver** fare clic su **[Chiudi]**.

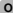
L'installazione del driver è completata.

Se viene visualizzata la finestra di dialogo **Modifica delle impostazioni di sistema**, scegliere **[Sì]**. Windows verrà riavviato automaticamente.

* *Se è stata modificata l'impostazione nella finestra “**Opzioni firma driver**” (punto 4 a p. 59), ripristinare l'impostazione originale dopo il riavvio di Windows.*

Collegamento e installazione dei driver (Macintosh)

Installazione e configurazione dei driver

I passi da eseguire sull'UM-2EX stesso sono indicati con il simbolo  **Operation of the UM-2EX**.

Utenti Mac OS X

■ Installazione del driver

* *Se durante l'installazione viene visualizzata la finestra di dialogo **"Authenticate"**, inserire la password e fare clic su **"OK"**.*

* *La schermata visualizzata potrebbe variare a seconda dell'ambiente e del sistema operativo installato.*

1. Accendere il Macintosh con l'UM-2EX scollegato.

* *Scollegare tutti i cavi USB ad eccezione di quelli della tastiera e del mouse e riavviare il Macintosh.*

2. Chiudere tutti i programmi in esecuzione.

3. Preparare il CD-ROM.

Inserire il CD nell'apposita unità del Macintosh.

4. Nella cartella **Driver (Mac OS X)** del CD-ROM, fare doppio clic su **UM2USBDriver.pkg**.

È possibile che venga visualizzato un messaggio simile a **"This Installer package needs to..."**.

Fare clic su **"Continua"**.

5. Sullo schermo comparirà il seguente messaggio: **"Welcome to the EDIROL UM-2Driver Installer"**.

Fare clic su **[Continua]**.

6. Sullo schermo verrà visualizzato il messaggio: **"Select a Destination"**.

Selezionare l'unità in cui è installato il sistema operativo e fare clic su **[Continua]**.

* *Selezionare il disco di avvio come unità.*

7. Verrà visualizzato il messaggio **"Installazione Standard"**.

Fare clic su **[Installa]** o **[Upgrade]**.

8. Verrà visualizzato il messaggio **"Installing this software requires you to restart your computer when the installation is done."**

Fare clic su **[Continua installazione]**.

9. Verrà visualizzato il messaggio **"The software was successfully installed"**.

Fare clic su **[Riavvia]** per riavviare il Macintosh.

La procedura d'installazione del driver UM-2 è giunta al termine.

Successivamente, configurare il dispositivo MIDI. (→ **"Configurazione del driver"** (p. 63))

■ Configurazione del driver

Di seguito vengono descritte le impostazioni che abilitano l'uso dell'UM-2EX con software sequencer utilizzando le impostazioni standard di Macintosh.

Se si utilizza un software sequencer che non utilizza le impostazioni standard di Macintosh, eseguire le impostazioni contenute nel software sequencer.

* La schermata visualizzata potrebbe variare a seconda dell'ambiente e del sistema operativo installato.

- 1. Operation of the UM-2EX:** Spostare l'**ADVANCED (mode select) Switch** dell'UM-2EX sulla posizione **ON**.
- 2. Operation of the UM-2EX:** Collegare l'UM-2EX al Macintosh.
 - * Collegare il cavo al connettore USB del Macintosh, non a quello della tastiera.
 - * Questo apparecchio è provvisto di un circuito di protezione. È necessario attendere qualche secondo dopo aver collegato l'UM-2EX prima che l'apparecchio funzioni normalmente.
- Aprire la cartella **Applications** del disco fisso del Macintosh. Nella cartella **Utilities** fare doppio clic su **Audio MIDI Setup** per aprire la finestra di dialogo **Audio MIDI Setup**.



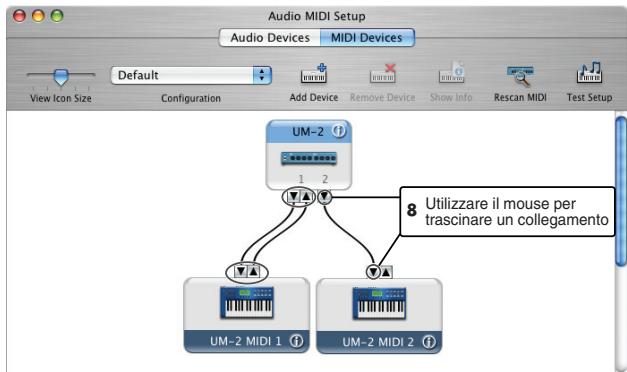
- Fare clic sulla scheda **MIDI Devices**.
- Verificare che **UM-2** viene visualizzato nella finestra di dialogo **Audio MIDI Setup**.
 - * Se l'**UM-2** non viene visualizzato o se non è attivo, significa che l'UM-2EX non è stato riconosciuto in modo corretto. Fare clic su **Rescan MIDI**. Scollegare e ricollegare l'UM-2EX.
 - * Potrebbero essere presenti impostazioni che appartengono a una installazione precedente di una diversa versione del driver. In questo caso, fare clic su **UM-2** o **EDIROL UM-2** per selezionarlo e fare clic su **Remove Selected Device** per cancellare le impostazioni.
- Fare due volte clic su **Add Device**.
Vengono visualizzati due **nuovi dispositivi esterni**.

7. Impostare il **nome del dispositivo**.


1. Dopo aver selezionato **nuovo dispositivo esterno**, fare clic su **Mostra Info**.
2. Immettere il nome nel campo **Device Name**.



8. Collegare i simboli ▼ e ▲ (che rappresentano le uscite e le entrate) dell'icona **UM-2** a quelli dell'icona **nuovo dispositivo esterno** utilizzando il mouse per trascinarli.

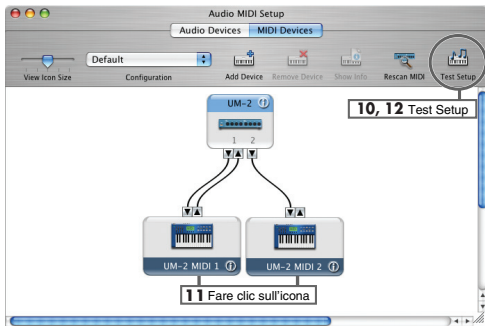


9. Se si sta utilizzando **Mac OS X v10.2 o anteriori**:
Chiudere la finestra di dialogo **Audio MIDI Setup**. La procedura di installazione è giunta al termine.
Se si sta utilizzando **Mac OS X v10.3 o posteriori**:
Verificare che la trasmissione e la ricezione MIDI siano corrette. Eseguire le operazioni descritte ai punti da 10 a 13 (p. 65).

10. Fare clic su **Test Setup**.
La forma del cursore del mouse cambia .

11. Fare clic sull'area raffigurata nell'immagine. Se l'indicatore MIDI OUT corrispondente dell'UM-2EX lampeggia, le impostazioni sono corrette.

12. Fare clic su **Test Setup** e completare la verifica.



13. Chiudere la finestra di dialogo **Audio MIDI Setup**.

Quando si utilizza l'UM-2EX con il software sequencer

Prima di utilizzare l'UM-2EX con il software sequencer, leggere le seguenti indicazioni.

- Collegare l'UM-2EX al Macintosh prima di avviare il software sequencer.
- Non scollegare l'UM-2EX dal Macintosh mentre il software sequencer è in esecuzione. Chiudere il software sequencer prima di scollegare l'UM-2EX dal Macintosh.
- L'UM-2EX non funziona in ambiente Classic Mac OS X. Utilizzare l'UM-2EX quando l'ambiente Classic non è in esecuzione.

Conexión e instalación de los controladores (Windows)

Instalación del controlador

Los pasos que deben realizarse en el propio UM-2EX aparecen marcados con el símbolo

Operation of the UM-2EX .

Usuarios de Windows XP/2000

1. Con el UM-2EX desconectado, inicie Windows.
No conecte el UM-2EX al equipo hasta que llegue al Paso 13 (pág. 68).
 - * *Desconecte todos los cables USB excepto el del teclado USB y el ratón USB (si se utilizan).*
 - * *Inicie sesión en Windows utilizando un nombre de usuario con privilegios de administrador (como Administrador).*
2. Abra el cuadro de diálogo **Propiedades del sistema**.
Windows XP:
 1. Haga clic en el menú **Inicio** de Windows y seleccione **Panel de control**.
 2. En **"Elija una categoría"**, haga clic en **"Rendimiento y mantenimiento"**.
 3. En **"o elija un icono del Panel de control"**, haga clic en el icono **Sistema**.
En función de la configuración, puede que el icono **Sistema** aparezca directamente en el **Panel de control** (en la Vista clásica). En este caso, haga doble clic en el icono **Sistema**.**Windows 2000:**
 1. Haga clic en el menú **Inicio** de Windows y seleccione **Configuración | Panel de control**.
 2. En el **Panel de control**, haga doble clic en el icono **Sistema**.
 3. Haga clic en la ficha **Hardware** y, a continuación, en **[Firma de controladores]**.
Aparecerá el cuadro de diálogo **Opciones de firma del controlador**.
 4. En el cuadro de diálogo **Opciones de firma del controlador**, seleccione **"Ninguna"**, y a continuación haga clic en **[Aceptar]**.
Si la opción seleccionada es **"Advertir"** o **"Bloquear"**, cámbiela a **"Ninguna"**. A continuación, cuando haya acabado de instalar el controlador, vuelva a cambiarla a la opción original.
 5. Haga clic en **[Aceptar]** para cerrar el cuadro de diálogo **Propiedades del sistema**.
 6. Salga de todos los programas de software que esté ejecutando (aplicaciones).
Cierre todas las ventanas que estén abiertas. Si está utilizando un antivirus o software similar, deberá cerrar todos estos programas.

7. Prepare el CD-ROM.
Inserte el CD-ROM en la unidad de CD-ROM de su PC.

* *Si aparece el mensaje “Windows puede realizar la misma acción cada vez que inserte un disco o conecte un dispositivo con este tipo de archivo”, haga clic en [Cancelar].*

8. En el menú Inicio de Windows, elija Ejecutar....

9. En el campo Abrir del cuadro de diálogo “Ejecutar...”, escriba lo siguiente y haga clic en [Aceptar].

D: \Driver\XP2k\setup.exe

* *En nombre de la unidad es “D:” en el ejemplo descriptivo mostrado en esta página, pero puede ser otro en su sistema. Use el nombre de la unidad de CD-ROM.*

10. Aparecerá el cuadro de diálogo **Configuración del controlador**.

Haga clic en [Siguiente].

11. Para comenzar la instalación, haga clic en [Siguiente] de nuevo. Se iniciará la instalación.

Windows XP:

Si “**Opciones de firma del controlador**” en el paso 4 es cualquier valor que no sea “**Ninguna**”, aparece un cuadro de diálogo con el símbolo “!” o “x”. Si aparece un botón de [Continuar], haga clic en [Continuar] para proseguir con la instalación. Si no puede continuar, haga clic en [Aceptar] y repita la instalación del controlador desde el paso 1.

Windows 2000:

Si “**Opciones de firma del controlador**” en el paso 4 es cualquier valor que no sea “**Ninguna**”, aparece un cuadro de diálogo que indica “**Firma digital no encontrada**”. Si aparece un botón de [Sí], haga clic en [Sí] para proseguir con la instalación. Si no puede continuar, haga clic en [Aceptar] y repita la instalación del controlador desde el paso 1.

Aparecerá el cuadro de diálogo “**El programa de instalación está preparado para instalar el controlador**”.

Ahora puede instalar el controlador.

12. **Operation of the UM-2EX** Ajuste el **ADVANCED (mode select) Switch** del UM-2EX en **ON**.

* *El controlador no se puede instalar mediante el siguiente procedimiento si el interruptor está en OFF.*

Si está utilizando Windows 98/Me/2000/XP o XP SP1, debe encender el Interruptor de selección del modo ADVANCED antes de conectar el UM-2EX al ordenador.

13. Operation of the UM-2EX Conecte el UM-2EX al ordenador.

Aparecerá un mensaje de **“Hardware nuevo encontrado”**. Espere.

- * *Esta unidad está provista de un circuito de protección. Es necesario dejar pasar un pequeño intervalo (de unos segundos) después de conectar el UM-2EX para que la unidad funcione correctamente.*

Windows XP:

1. Aparecerá el cuadro de diálogo del **Asistente para hardware nuevo encontrado**.

Si aparece el mensaje **“¿Conectar a Windows Update para buscar software?”**, elija **“No”** y a continuación haga clic en **[Siguiente]**.

2. Asegúrese de que se indica **“EDIROL UM-2”**. A continuación, seleccione **“Buscar mejor controlador en estas ubicaciones”** y haga clic en **[Siguiente]**.

- * *Si **“Opciones de firma del controlador”** en el paso 4 es cualquier valor que no sea **“Ninguna”**, aparecerá un cuadro de diálogo con el símbolo **“!”**. Haga clic en **[Continuar]** para proseguir con la instalación.*

Windows 2000:

Si **“Opciones de firma del controlador”** en el paso 4 es cualquier valor que no sea **“Ninguna”**, aparece un cuadro de diálogo que indica **“Firma digital no encontrada”**. Haga clic en **[Sí]** para proseguir con la instalación.

14. Aparecerá el cuadro de diálogo **finalización del Asistente para hardware nuevo encontrado**. Haga clic en **[Finalizar]**.

15. En el cuadro de diálogo **Configuración del controlador**, haga clic en **[Cerrar]**.

Con esto finaliza la instalación del controlador.

Si aparece el cuadro de diálogo **Cambio de configuración del sistema**, haga clic en **[Sí]**. Windows se reiniciará automáticamente.

- * *Si ha cambiado la configuración de **“Opciones de firma de controlador”** (paso 4 en pág. 66), restablezca la configuración original después de reiniciar Windows.*

Instalación del controlador y ajustes

Los pasos que deben realizarse en el propio UM-2EX aparecen marcados con el símbolo

Operation of the UM-2EX .

Usuarios de Mac OS X

■ Instalación del controlador

* Si aparece el cuadro de diálogo **“Authenticate”** durante la instalación, introduzca la contraseña y haga clic en **“OK”**.

* En la pantalla del Macintosh podrá aparecer información diferente, en función de su entorno informático y del sistema operativo que esté utilizando.

1. Con el UM-2EX desconectado, inicie Macintosh.

* *Desconecte todos los cables USB, excepto los del teclado o del ratón, e inicie el sistema.*

2. Salga de todos los programas de software que esté ejecutando (aplicaciones).

3. Prepare el CD-ROM.

Inserte el CD-ROM en la unidad de CD-ROM del Macintosh.

4. En la carpeta **Driver (Mac OS X)** del CD-ROM, haga doble clic en **UM2USBDriver.pkg**. Es posible que aparezca un mensaje parecido a **“El paquete del programa de instalación necesita...”**.

Haga clic en **“Continue”**.

5. Aparecerá el mensaje **“Welcome to the EDIROL UM-2Driver Installer”**. Haga clic en **[Continue]**.

6. La pantalla indicará **“Select a Destination”**.

Haga clic en la unidad en la que está instalado el sistema operativo y, a continuación, haga clic en **[Continue]**.

* *Seleccione el disco de inicio como la unidad.*

7. La pantalla indicará **“Easy Install”**.

Haga clic en **[Install]** o **[Upgrade]**.

8. La pantalla indicará **“Installing this software requires you to restart your computer when the installation is done”**.

Haga clic en **[Continue Installation]**.

9. La pantalla indicará **“The software was successfully installed”**.

Haga clic en **[Restart]** para reiniciar el Macintosh.

Con esto finaliza la instalación del controlador de UM-2.

A continuación, configure los dispositivos MIDI. (→ **“Configuración del controlador”** (pág. 70))

■ Configuración del controlador

A continuación se describen los ajustes que permiten el uso del UM-2EX con software del secuenciador mediante ajustes de dispositivos estándares de Macintosh.

Si está utilizando un software de secuenciador que no utilice los ajustes de dispositivo estándar de Macintosh, realice la configuración del dispositivo dentro del software del secuenciador.

* En la pantalla del Macintosh podrá aparecer información diferente, en función de su entorno informático y del sistema operativo que esté utilizando.

1. **Operation of the UM-2EX** Ajuste el **ADVANCED (mode select) Switch** del UM-2EX en la posición **ON**.

2. **Operation of the UM-2EX** Conecte el UM-2EX al Macintosh.

* Conecte el cable al conector USB del propio Macintosh, no al conector USB del teclado.

* Esta unidad está provista de un circuito de protección. Es necesario dejar pasar un pequeño intervalo (de unos segundos) después de conectar el UM-2EX para que la unidad funcione correctamente.

3. Abra la carpeta **Applications** de su disco duro. En la carpeta **Utilities**, haga doble clic en **Audio MIDI Setup** para abrir el cuadro de diálogo **Audio MIDI Setup**.



4. Haga clic en la ficha **MIDI Devices**.

5. Confirme que **UM-2** aparece en el cuadro de diálogo **Audio MIDI Setup**.

* Si **UM-2** no aparece o aparece en gris, significa que no se está reconociendo correctamente el UM-2EX. Haga clic en **Rescan MIDI**. Intente desconectar y volver a conectar el UM-2EX.

* Puede que permanezcan los ajustes anteriores de la instalación de una versión diferente del controlador. Si es así, haga clic en **UM-2** que aparece en gris o en **EDIROL UM-2** para seleccionarlo, y a continuación haga clic en **Remove Selected Device** para eliminar los ajustes.

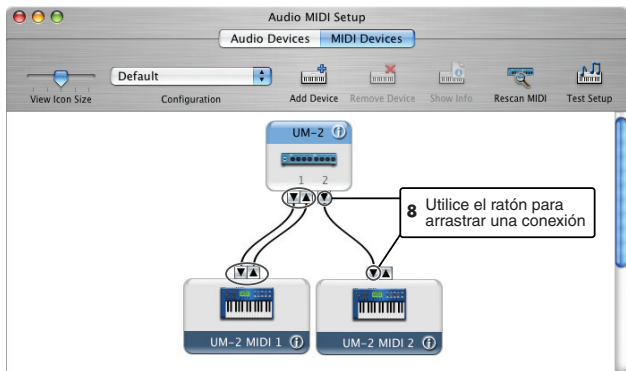
6. Haga doble clic en **Add Device**.
Aparecerán dos **new external device**.

7. Introduzca el nombre en **Device Name**.

1. Una vez seleccionado **new external device**, haga clic en **Show Info**.
2. Introduzca el nombre en el campo **Device Name**.



8. Conecte los símbolos ▼ y ▲ (que representan las salidas y entradas) del icono **UM-2** a los del icono **new external device** utilizando el ratón para arrastrarlos entre ellos.



9. Si está utilizando **Mac OS X v10.2** o una versión anterior:

Cierre el cuadro de diálogo **Audio MIDI Setup**. De este modo se completan los ajustes.

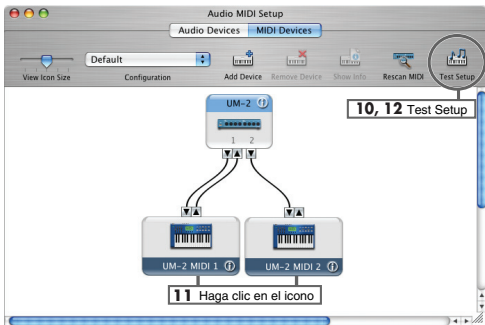
Si está utilizando **Mac OS X v10.3** o una versión posterior:

Confirme que MIDI se está transmitiendo y recibiendo correctamente. Realice los pasos 10–13 (pág. 72).

10. Haga clic en **Test Setup**.
Cambia la forma del cursor del ratón 🎵.

11. Haga clic en el área que se muestra en la ilustración. Si el indicador de MIDI OUT correspondiente del UM-2EX parpadea, significa que los ajustes se han realizado correctamente.

12. Haga clic en **Test Setup** y finalice la confirmación.



13. Cierre el cuadro de diálogo **Audio MIDI Setup**.

Cuando utilice el UM-2EX con el software del secuenciador

Antes de utilizar el UM-2EX con su software de secuenciador, tenga en cuenta los siguientes puntos.

- Conecte el UM-2EX al Macintosh antes de iniciar el software de secuenciador.
- No desconecte el UM-2EX del Macintosh mientras se esté ejecutando el software del secuenciador. Salga del software del secuenciador antes de desconectar el UM-2EX del Macintosh.
- El UM-2EX no funcionará en el entorno Classic de Mac OS X. Utilice el UM-2EX cuando no se esté ejecutando el entorno Classic.



This product complies with the requirements of European Directive 89/336/EEC.

For EU Countries

FEDERAL COMMUNICATIONS COMMISSION RADIO FREQUENCY INTERFERENCE STATEMENT

For the USA

This equipment has been tested and found to comply with the limits for a Class B digital device, pursuant to Part 15 of the FCC Rules. These limits are designed to provide reasonable protection against harmful interference in a residential installation. This equipment generates, uses, and can radiate radio frequency energy and, if not installed and used in accordance with the instructions, may cause harmful interference to radio communications. However, there is no guarantee that interference will not occur in a particular installation. If this equipment does cause harmful interference to radio or television reception, which can be determined by turning the equipment off and on, the user is encouraged to try to correct the interference by one or more of the following measures:

- Reorient or relocate the receiving antenna.
- Increase the separation between the equipment and receiver.
- Connect the equipment into an outlet on a circuit different from that to which the receiver is connected.
- Consult the dealer or an experienced radio/TV technician for help.

This device complies with Part 15 of the FCC Rules. Operation is subject to the following two conditions:

- (1) This device may not cause harmful interference, and
- (2) This device must accept any interference received, including interference that may cause undesired operation.

Unauthorized changes or modification to this system can void the users authority to operate this equipment.
This equipment requires shielded interface cables in order to meet FCC class B Limit.

For Canada

NOTICE

This Class B digital apparatus meets all requirements of the Canadian Interference-Causing Equipment Regulations.

AVIS

Cet appareil numérique de la classe B respecte toutes les exigences du Règlement sur le matériel brouilleur du Canada.

For the USA

DECLARATION OF CONFORMITY Compliance Information Statement

Model Name : UM-1EX
Type of Equipment : USB MIDI Interface
Responsible Party : Roland Corporation U.S.
Address : 5100 S. Eastern Avenue, Los Angeles, CA 90040-2938
Telephone : (323) 890 3700

Information

When you need repair service, call your nearest EDIROL/Roland Service Center or authorized EDIROL/Roland distributor in your country as shown below.

EDIROL

EUROPE

EDIROL (Europe) Ltd.
Studio 3/4 114 Power Road
London W4 5PY U. K.
TEL: +44 (0)20 8747 5949
FAX: +44 (0)20 8747 5948
http://www.edirol.com/europe

Deutschland

TEL: 0700 33 47 65 20

France

TEL: 0810 000 371

Italia

TEL: 02 93778329

Roland

NORTH AMERICA

CANADA

Roland Canada Music Ltd.
(Head Office)
5480 Parkwood Way Richmond
B. C., V6V 2M4 CANADA
TEL: (604) 270 6626

U. S. A.

Roland Corporation U.S.
5100 S. Eastern Avenue
Los Angeles, CA 90040-2938,
U. S. A.
TEL: (323) 890 3700

AFRICA

EGYPT

Al Fanny Trading Office
9, EBN Hagar Al Askalany
Street,
ARD El Golf, Heliopolis,
Cairo 11341, EGYPT
TEL: 20-2-417-1828

REUNION

Maison FO - YAM Marcel
25 Rue Jules Hermann,
Chaudron - BF79 97 491
Sté Clotilde Cedex,
REUNION ISLAND
TEL: (0262) 218-429

SOUTH AFRICA

Paul Bothner(PTY)Ltd.
Royal Cape Park, Unit 24
Londonderry Road, Ottery 7800
Cape Town, SOUTH AFRICA
TEL: (021) 799 4900

ASIA

CHINA

Roland Shanghai Electronics
Co.,Ltd.
5F, No.150 Pingliang Road
Shanghai 200090, CHINA
TEL: (021) 5580-0800

Roland Shanghai Electronics
Co.,Ltd.
(BEIJING OFFICE)
10F, No.18.3 Zhong Anhuaxili
Chaoyang District Beijing
100011 CHINA
TEL: (010) 6426-5050

Roland Shanghai Electronics
Co.,Ltd.
(GUANGZHOU OFFICE)

2/F, No.30 Si You Nan Er Jie
Yi Xiang, Wu Yang Xin Cheng,
Guangzhou 510600, CHINA
TEL: (020) 8736-0428

HONG KONG

Parsons Music Ltd.
8th Floor, Railway Plaza, 39
Chatham Road South, T.S.T,
Kowloon, HONG KONG
TEL: 2333 1863

INDIA

Rivera Digitec (India) Pvt. Ltd.
409, Nirman Kendra
Mahalaxmi Flats Compound
Off. Dr. Edwin Moses Road,
Mumbai-400011, INDIA
TEL: (022) 2493 9051

INDONESIA

PT Citra IntiRama
Jl. Cideng Timur No. 15J-150
Jakarta Pusat
INDONESIA
TEL: (021) 6324170

KOREA

Cosmos Corporation
1461-9, Seocho-Dong,
Seocho Ku, Seoul, KOREA
TEL: (02) 3486-8855

MALAYSIA/ SINGAPORE

Roland Asia Pacific Sdn. Bhd.
4F-1, Block C2, Jalan PJU 1/39,
Dataran Prima, 47301 Petaling
Jaya, Selangor, MALAYSIA
TEL: (03) 7805-3263

PHILIPPINES

G.A. Yupang & Co. Inc.
339 Gil J. Puyat Avenue
Makati, Metro Manila 1200,
PHILIPPINES
TEL: (02) 899 9801

TAIWAN

ROLAND TAIWAN
ENTERPRISE CO., LTD.
Room 5, 9fl. No. 112 Chung
Shan N.Road Sec. 2, Taipei,
TAIWAN, R.O.C.
TEL: (02) 2561 3339

THAILAND

Theera Music Co., Ltd.
330 Verng NakornKasem, Soi
2, Bangkok 10100, THAILAND
TEL: (02) 2248821

VIETNAM

SAIGON MUSIC
DISTRIBUTOR
(TAN DINH MUSIC)
138 Tran Quang Khai Street
Dist. 1, Ho Chi Minh City
VIETNAM
TEL: (08) 848-4068

AUSTRALIA/ NEW ZEALAND

AUSTRALIA/ NEW ZEALAND

Roland Corporation
Australia Pty.,Ltd.
38 Campbell Avenue
Dee Why West. NSW 2099
AUSTRALIA

For Australia
TEL: (02) 9982 8266
For New Zealand
TEL: (09) 3098 715

CENTRAL/LATIN AMERICA

ARGENTINA

Instrumentos Musicales S.A.
Av.Santa Fe 2055
1123 Buenos Aires
ARGENTINA
TEL: (011) 4508-2700

BARBADOS

A&B Music Supplies LTD
12 Webster Industrial Park
Wildely, St.Michael, Barbados
TEL: (246)430-1100

BRAZIL

Roland Brasil Ltda.
Rua San Jose, 780 Sala B
Parque Industrial San Jose
Cotia - Sao Paulo - SP, BRAZIL
TEL: (011) 4615 5666

CHILE

Commercial Fanny II S.A.
Rut.: 96.919.420-1
Nataliel Cox #739, 4th Floor
Santiago - Centro, CHILE
TEL: (02) 688-9540

COLOMBIA

Centro Musica Ltda.
Cra 43 B No 25 A 41 Bodegoda 9
Medellin, Colombia
TEL: (574)3812529

CURACAO

Zeelandia Music Center Inc.
Orionweg 30
Curacao, Netherland Antilles
TEL:(305)5926866

DOMINICAN REPUBLIC

Instrumentos Fernando
Giraldez
Calz Proyecto Central No.3
Ens.La Esperilla
Santo Domingo,
Dominican Republic
TEL:(809) 683 0305

ECUADOR

Mas Musica
Rumichaca 822 y Zaruma
Guayaquil - Ecuador
TEL:(593-4)2302364

GUATEMALA

Casa Instrumental
Calzada Roosevelt 34-01,zona 11
Ciudad de Guatemala
Guatemala
TEL:(502) 599-2888

HONDURAS

Almaceo Pajaro AZUL S.A. de C.V.
BO.Paz Barahona
3 Ave.11 Calle S.O
San Pedro Sula, Honduras
TEL: (504) 4615 5666

MARTINIQUE

Musique & Son
Z.LLes Mangle
97232 Le Lamantin
Martinique F.W.I.
TEL: 596 596 426860

Gigamus SARL
10 Rte De La Folie
97200 Fort De France
Martinique F.W.I.
TEL: 596 596 715222

MEXICO

Casa Veerkamp, s.a. de cv.
Av. Toluca No. 323, Col.
Olivar de los Padres 01780
Mexico D.F. MEXICO
TEL: (55) 5668-6699

NICARAGUA

Bansbach Instrumentos
Musicales Nicaragua
Altamira D'Este Calle Principal
de la Farmacia 5ta.Avenida
1 Cuadra al Lago.#503
Managua, Nicaragua
TEL: (505)277-2557

PERU

Audionet
Distribuciones Musicales SAC
Juan Fanning 530
Miraflores
Lima - Peru
TEL: (511) 4461388

TRINIDAD

AMR Ltd
Ground Floor
Maritime Plaza
Barataria Trinidad W.I.
TEL: (868)638 6385

URUGUAY

Todo Musica S.A.
Francisco Acuna de Figueroa 1771
C.P.: 11.800
Montevideo, URUGUAY
TEL: (02) 924-2335

VENEZUELA

Instrumentos Musicales
Allegro, C.A.
Av. las industrias edf. Guitar
import
#7 zona Industrial de Turumo
Caracas, Venezuela
TEL: (212) 244-1122

EUROPE

AUSTRIA

Musik Elektronische
Musikinstrumente HmbH.
Austrian Office
Eduard-Bodem-Gasse 8,
A-6020 Innsbruck, AUSTRIA
TEL: (0512) 26 44 260

BELGIUM/FRANCE/ HOLLAND/ LUXEMBOURG

Roland Central Europe N.V.
Houtstraat 3, B-2260, Oevel
(Westerlo) BELGIUM
TEL: (014) 575811

CZECH REP.

K-AUDIO
Kardasovska 626.
CZ-198 00 Praha 9,
CZECH REP.
TEL: (2) 666 10529

DENMARK

Roland Scandinavia A/S
Nordhavnsvej 7, Postbox 880,
DK-2100 Copenhagen
DENMARK
TEL: 3916 6200

FINLAND

Roland Scandinavia As, Filial
Finland
Elannontie 5
FIN-01510 Vantaa, FINLAND
TEL: (09) 68 24 020

GERMANY

Roland Elektronische
Musikinstrumente HmbH.
Oststrasse 96, 22844
Norderstedt, GERMANY
TEL: (040) 52 60090

GREECE

STOLLAS S.A.
Music Sound Light
155, New National Road
Patras 26442, GREECE
TEL: 2610 435400

HUNGARY

Roland East Europe Ltd.
Warehouse Area 'DEPO' Pf.83
H-2046 Torokbalint,
HUNGARY
TEL: (23) 511011

IRELAND

Roland Ireland
G2 Calmout Park, Calmout
Avenue, Dublin 12
Republic of IRELAND
TEL: (01) 4294444

ITALY

Roland Italy S. p. a.
Viale delle Industrie 8,
20020 Arese, Milano, ITALY
TEL: (02) 937-78300

NORWAY

Roland Scandinavia Avd.
Kontor Norge
Lilleakerveien 2 Postboks 95
Lilleaker N-0216 Oslo
NORWAY
TEL: 2273 0074

POLAND

MX MUSICAL SP.Z.O.O.
Ul. Gibrallarska 4.
PL-03664 Warszawa POLAND
TEL: (022) 679 44 19

PORTUGAL

Roland Iberia, S.L.
Portugal Office
Cais das Pedras, 8/9-1 Dto
4050-465, Porto, PORTUGAL
TEL: 22 608 00 60

ROMANIA

FBS LINES
Piata Libertatii 1,
535500 Gheorgheni,
ROMANIA
TEL: (266) 364 609

RUSSIA

MuTek
Dorozhnaya ul.3, korp.6
117 545 Moscow, RUSSIA
TEL: (095) 981-4967

SPAIN

Roland Iberia, S.L.
Paseo Garcia Faria, 33-35
08005 Barcelona SPAIN
TEL: 93 493 91 00

SWEDEN

Roland Scandinavia A/S
SWEDISH SALES OFFICE
Danvik Center 28, 2 tr.
S-131 30 Nacka SWEDEN
TEL: (08) 702 00 20

SWITZERLAND

Roland (Switzerland) AG
Landstrasse 5, Postfach,
CH-4452 Hingen,
SWITZERLAND
TEL: (061) 927-8383

UKRAINE

TIC-TAC
Mira Str. 19/108
P.O. Box 180
295400 Munkachevo,
UKRAINE
TEL: (03131) 414-40

UNITED KINGDOM

Roland (U.K.) Ltd.
Atlantic Close, Swansea
Enterprise Park, SWANSEA
SA7 9EJ,
UNITED KINGDOM
TEL: (01792) 702701

MIDDLE EAST

BAHRAIN

Maan Stores
No.16, Bab Al Bahrain Avenue,
P.O.Box 247, Manama 304,
State of BAHRAIN
TEL: 17 211 005

CYPRUS

Radex Sound Equipment Ltd.
17, Diagorou Street, Nicosia,
CYPRUS
TEL: (022) 66-9426

IRAN

MOCO INC.
No.41 Nike St., Dr.Shariyaty Av.,
Roberoye Cerah Mirdamad
Tehran, IRAN
TEL: (021) 285-4169

ISRAEL

Halilit P. Spons & Sons
Ltd.
8 Retzif Ha'aliya Hashnya St.
Tel-Aviv-Yafo ISRAEL
TEL: (03) 6823666

JORDAN

MUSIC HOUSE CO. LTD.
FREDDY FUR MUSIC
P. O. Box 922846
Amman 11192 JORDAN
TEL: (06) 5692696

KUWAIT

EASA HUSAIN AL-YOUSIFI
& SONS CO.
Abdullah Salem Street,
Safat, KUWAIT
TEL: 243-6399

LEBANON

Chahine S.A.L.
Gerge Zeidan St., Chahine
Bldg., Achrafieh, P.O.Box: 16-
5857
Beirut, LEBANON
TEL: (01) 20-1441

OMAN

TALENTZ CENTRE L.L.C.
Malatan House No.1
Al Noor Street, Ruwi
SULTANATE OF OMAN
TEL: 2478 3443

QATAR

QADAR Studio & Stores
P.O. Box 62,
Doha, QATAR
TEL: 423554

SAUDI ARABIA

aDawlah Universal
Electronics APL
Corniche Road, Aldossary
Bldg., 1st Floor, Alkhobar,
SAUDI ARABIA
P.O.Box 2154, Alkhobar 31952
SAUDI ARABIA
TEL: (03) 898 2081

SYRIA

Technical Light & Sound
Center
Rawda, Abdul Qader Jazairi St.
Bldg. No. 21, P.O.Box 13520,
Damascus, SYRIA
TEL: (011) 223-5384

TURKEY

ZUHAL DIS TICARET A.S.
Gulih Dede Cad. No.37
Beyoglu - Istanbul / TURKEY
TEL: (0212) 249 85 10

U.A.E.

Zak Electronics & Musical
Instruments Co. L.L.C.
Zabeed Road, Al Sherooq Bldg.,
No. 14, Grand Floor, Dubai,
U.A.E.
TEL: (04) 3360715

As of December 1, 2005
(EDIROL-1)

