

Use with Windows 2000

Driver installation and settings

This device supports Microsoft® Windows® 2000 Professional.

Use the following procedure to install the driver and make settings.

* Please refer to the owner's manual as well.

1. Turn on the power of your computer.
 - * To prevent damage to your speaker system, turn down the volume of this device and of your peripheral audio equipment.
2. Log on as Administrator.
 - * If you log on as other than Administrator and perform the installation, the driver will not be installed correctly.
3. After Windows starts up, connect this device.
 - (1) Before connection, you must exit all currently-running applications.
 - (2) Use a USB cable to connect this device to your computer.
 - * For details on connection, refer to the owner's manual for your device.
 - (3) If your device is the **MA-150U**, turn on its power.
4. Installation will begin automatically, and will end automatically.

Depending on your computer, a certain length of time may be required for the installation.

 - * Do not touch the mouse or keyboard while the **Found New Hardware** dialog box is open, since the installation is in progress.
5. Specify the audio input/output destinations.
 - (1) Click the Windows **Start** button, and from the menu, choose **Settings-Control Panel**.
 - (2) In **Control Panel**, double-click the **Sounds and Multimedia** icon to access the **Sounds and Multimedia Properties** dialog box.
 - (3) Click the **Audio** tab.
 - (4) Select **USB Audio Device** as the **Preferred device for sound playback**.
 - (5) If your device is the **UA-30**, select **USB Audio Device** as the **Preferred device for sound recording**.
 - (6) When you have finished making settings, click **OK**.
6. Adjust the volume so that you hear sound.
 - Adjust the volume of this device and of your peripheral audio devices.
 - Click the Windows **Start** button. From the menu that appears, choose **Programs-Accessories-Entertainment-Volume Control**, and adjust the volume.



When using the **MA-150U** speakers, pressing **PUSH USB LEVEL** alters the speaker volume level controlled by the regular volume controls. However, when the Windows CD player screen is active, the **CD player** volume level changes.

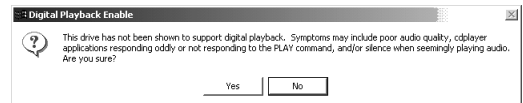
To digitally play back a music CD

■ Procedure

1. In **Control Panel**, double-click **Sounds and Multimedia**.
2. Select the **Hardware** tab, and in the **Devices:** list, double-click **Show CD-ROM drive**.
3. The CD-ROM drive property dialog box will appear. Select the **Properties** tab.
4. In **Digital CD Playback**, check the **Enable digital CD audio for this CD-ROM device** check box.
5. Click **OK** to close the window. If you need to restart your computer, be sure to restart it.



After clicking **OK**, the following or a similar message may appear. In such instances, you may not be able to play music CDs, even after clicking **Yes**. Should this occur, please consult the computer manufacturer for a solution or workaround.



Uninstalling the driver

In the following situations, please uninstall the driver and then re-install it.

- If you wish to install the driver again
- If driver installation was halted mid-way through the process

■ Procedure

1. Use a USB cable to connect this device to your computer.
 - * If your device is the **MA-150U**, turn on its power.
2. In **Control Panel**, double-click **System**.
3. Select the **Hardware** tab, and then select **Device Manager**.
4. Double-click **Sound, video and game controllers**, and select **USB Audio Device** from the list.
5. In the **Device Manager** dialog box, click **Action** and select **Uninstall...** Then as directed by the screen, click **OK**.
6. After uninstalling, disconnect this device from your computer, and **restart** your computer.

After restarting, install the driver following the procedure described in this document.

Installing the included software (UA-30 only)

Install the included software as described in the owner's manual.