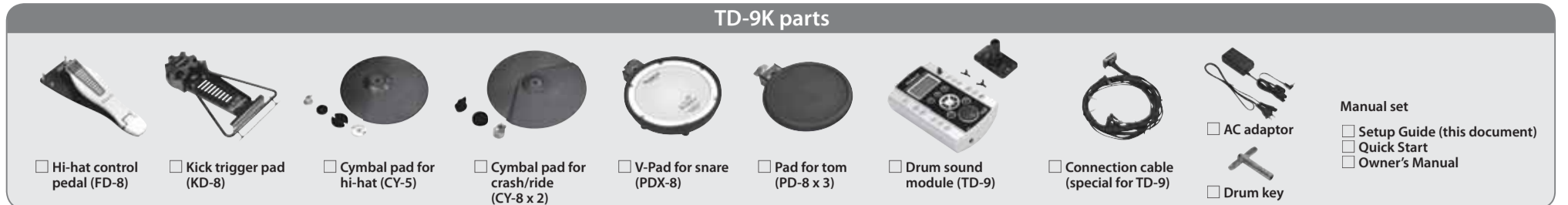
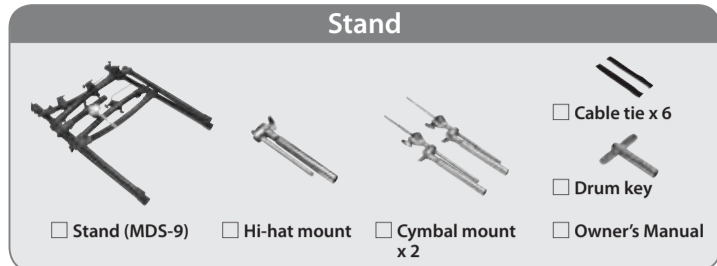


# 01 Check the included items

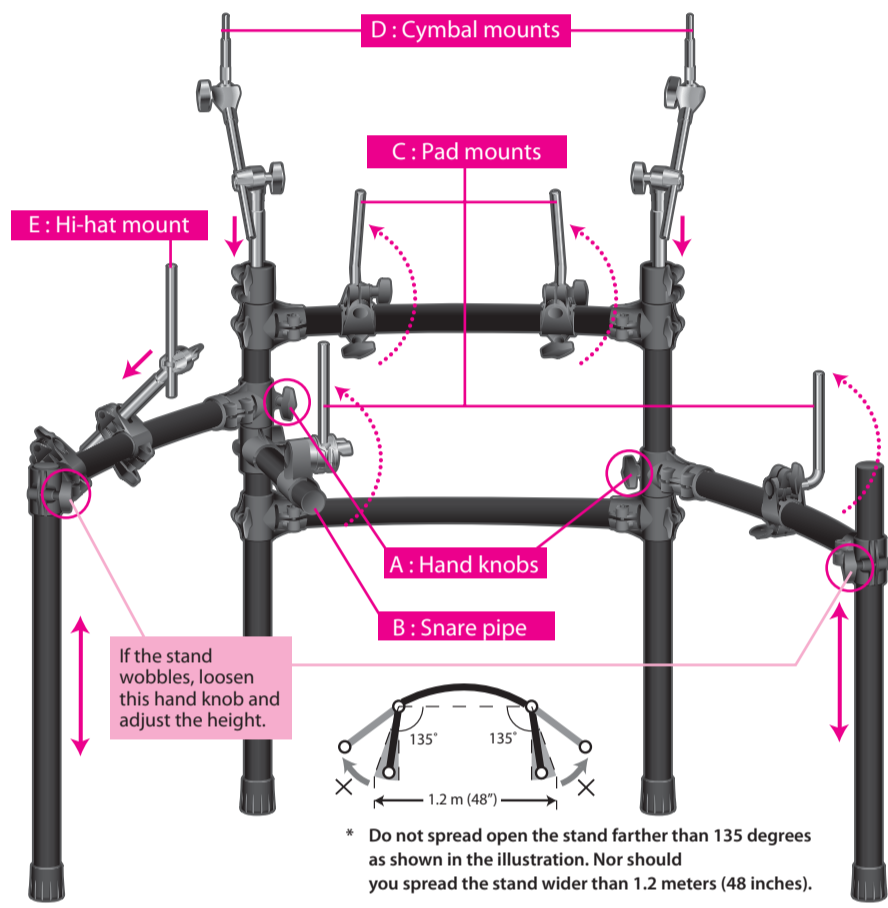
As soon as you open the package, check to see that all items are included. If anything is missing, please contact your dealer.



# 02 Assemble the stand

## Assembly procedure

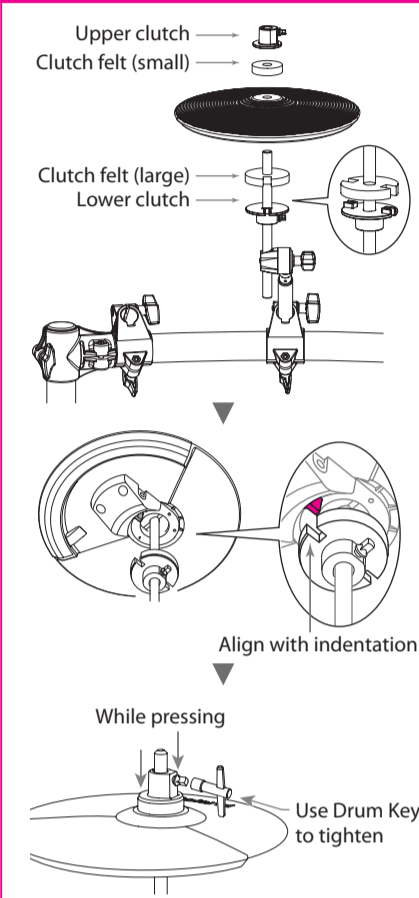
- Loosen the hand knobs (A, two locations) and spread open the left and right legs of the stand as shown in the illustration.
- Loosen the hand knob of the snare pipe (B), and pull out the snare pipe toward the side of the performer.
- Adjust the pad mounts (C, four locations) as shown in the illustration.
- Attach the cymbal mounts (D, two locations) and hi-hat mount (E) as shown in the illustration.



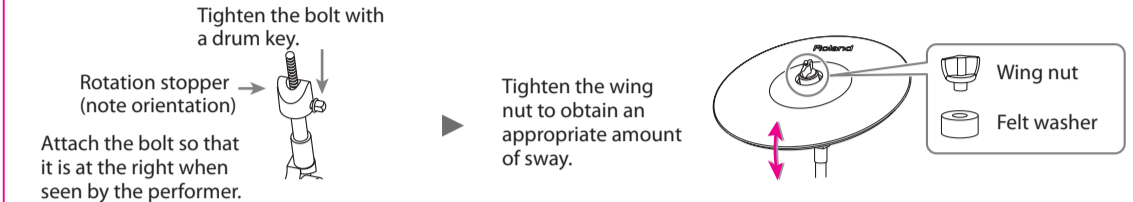
# 03 Attach the parts

\* The parts required for mounting the cymbals and the hi-hat are included in the TD-9K attachment box.

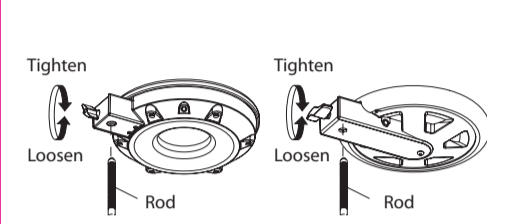
## Attach the hi-hat (CY-5)



## Attach the crash cymbal (CY-8) and ride cymbal (CY-8)



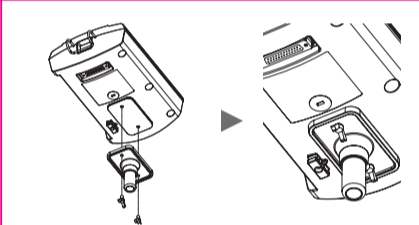
## Attach the snare (PDX-8) and toms (PD-8)



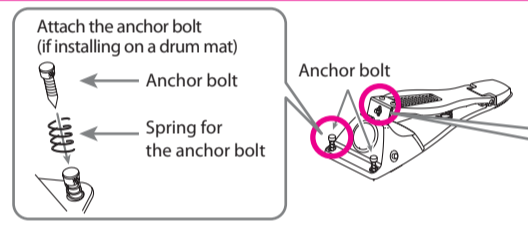
## Adjusting the tension (PDX-8)

- 
- Finger-tighten all six of the tuning bolts in the sequence shown in the illustration.
  - The appropriate amount of tension is one that will provide approximately the same striking response as on an acoustic drum.
  - Use the drum key to adjust the tension as needed.

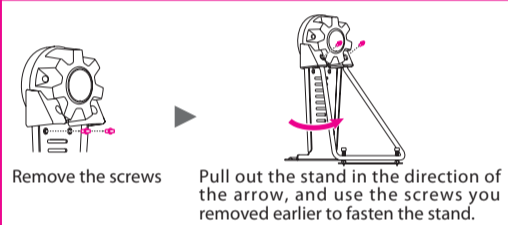
## Attach the sound module (TD-9)



## Assemble the hi-hat control pedal (FD-8)



## Assemble the kick (KD-8)

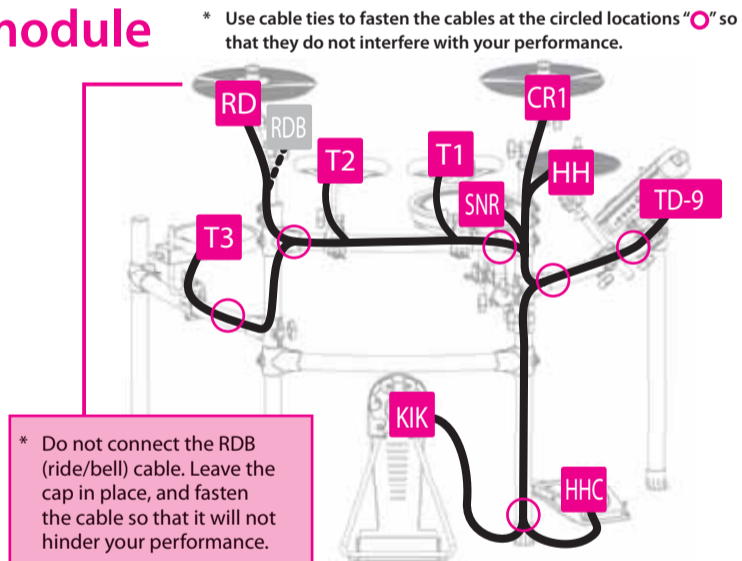


# 04 Connect the pads to the sound module

\* To prevent the inadvertent disruption of power to your unit (should the plug be pulled out accidentally), and to avoid applying undue stress to the AC adaptor jack, anchor the power cord using the cord hook, as shown in the illustration.

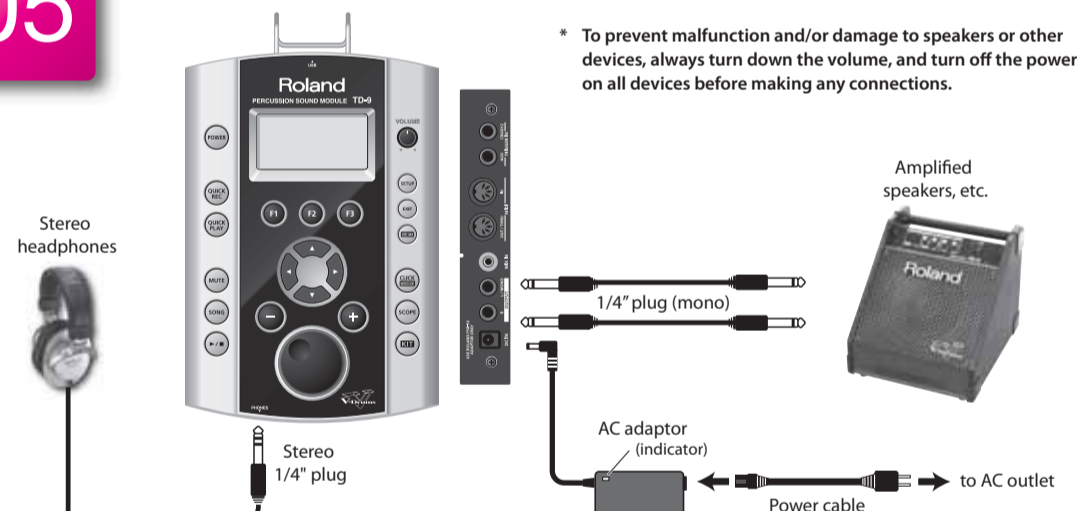
## Connection procedure

- Connect the cable to the TD-9 as shown in the illustration.
- Labels indicating the pad to be connected are attached to the cable. Make connections as shown in the illustration.
- Connect the AC adaptor, and fasten it to the cable hook as shown in the illustration to prevent it from being accidentally unplugged.



# 05 Connect the AC adaptor and speakers

\* To prevent malfunction and/or damage to speakers or other devices, always turn down the volume, and turn off the power on all devices before making any connections.



This completes assembly and connections.

- To learn about the TD-9's wide range of unique functionality, refer to "Quick Start."
- If you need further information regarding the set up of TD-9K, refer to the section "If you don't hear any sound" (p.18) in the Owner's Manual.

## Detailed explanation of each part

### KD-8 (Kick)

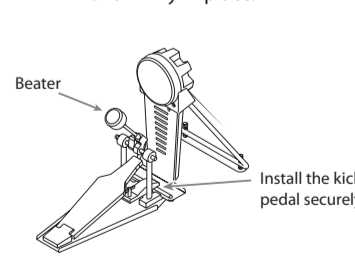
\* Use a commercially available kick pedal.

#### 01 Making the settings

- 
- Remove the screws attached to the reverse side of the KD-8's trigger.
  - Pull out the stand in the direction indicated by the arrow until it is fully extended.
  - Using any commercially available drum key, tighten the screws removed in Step 1 so that the stand is firmly secured.

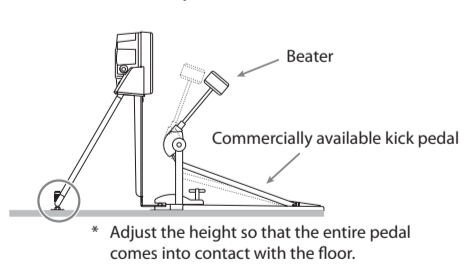
#### 02 Attach the kick pedal

Position the beater so that it strikes the center of the head, then secure the kick pedal and KD-8 firmly in place.



#### 03 Adjusting the foot plate height

\* Depending on your kick pedal, it can be unstable when you attach it to the KD-8. Be sure to adjust the foot plate height so that the entire bottom surface of the pedal is attached to the floor.



This height will vary depending on your kick pedal.

- Loosen the stand's anchor bolts and remove the foot plate.
- Set the kick pedal so that the entire bottom surface is attached to the floor.
- In most cases, the stand becomes somewhat elevated. Tighten the anchor bolts securely there to fix the stand and foot plate.

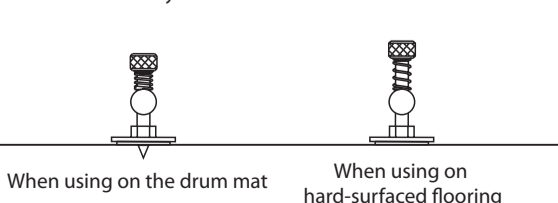
#### NOTE

- Install the kick pedal securely.
- Take care not to pinch your fingers.
- The tips of the anchor bolts are sharp. Handle with care.
- When moving the KD-8, be sure to remove the screws and fold the stand. Transporting the KD-8 while it remains open may subject the stand to excessive strain and result in damage to the stand.
- Anti-skid tape is affixed to the foot plate. When transporting the KD-8, don't forget to pick up the foot plate.

#### 04 Adjusting the anchor bolts

When using the kick pedal on a drum mat or similar surface, adjust the anchor bolts so their tips protrude from the plate. Then, secure the pedal in place; this will make it easier to use the kick pedal.

However, when used on hard-surfaced flooring, the anchor bolts may damage the floor. Adjust the anchor bolts correctly.



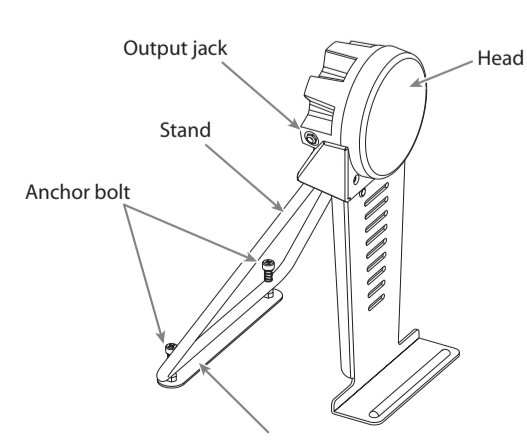
#### NOTE

- The tips of the anchor bolts are sharp. Handle with care.

#### 05 When using a twin pedal

Position the two beaters equally apart from the center of the pad as shown in the figure at left. If one of the beaters is further away from the center than the other, the sound from the further beater will be lower in volume, or will not sound as desired.

Using a twin pedal will result in lower sensitivity as compared to when a single pedal is used. Raise the sensitivity on the sound module.



KD-8 component names

Other side

