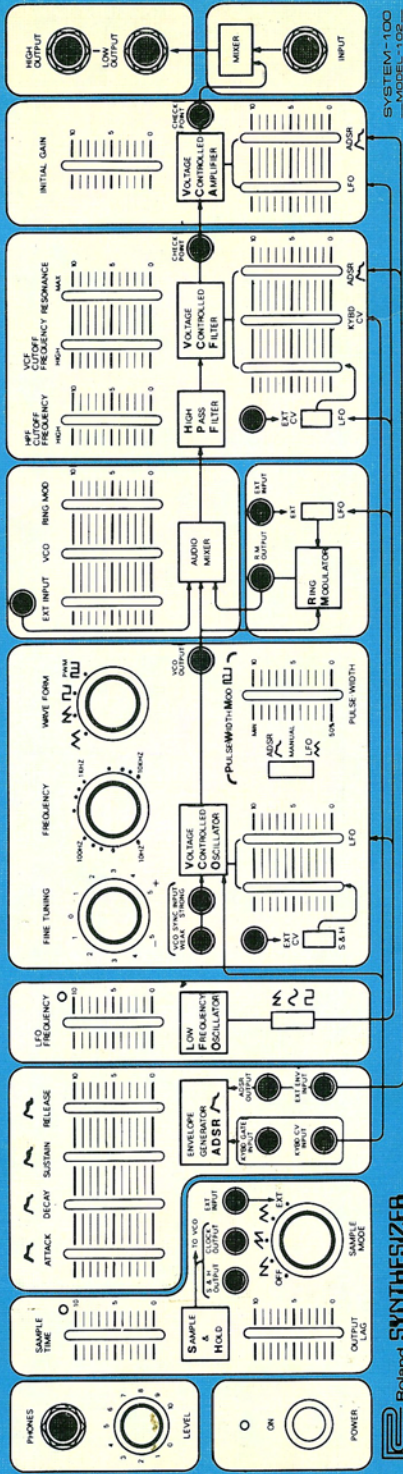
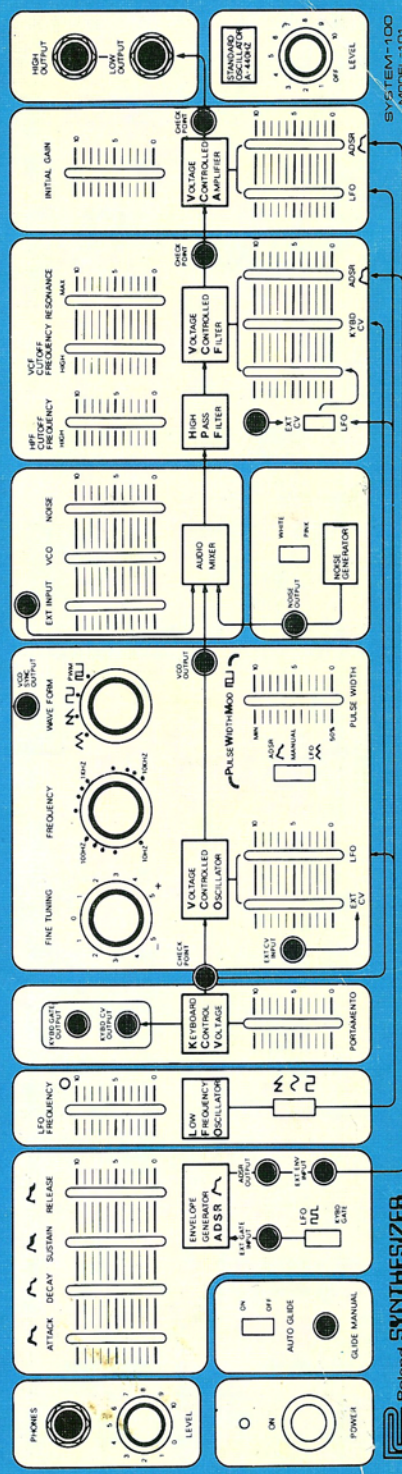


ROLAND SYSTEM-100 / EXPANDER 102 PATCHBOOK

エクスパンダー102 パッチブック



Roland SYNTHESIZER



Roland SYNTHESIZER

LIST OF PATCH DIAGRAMS

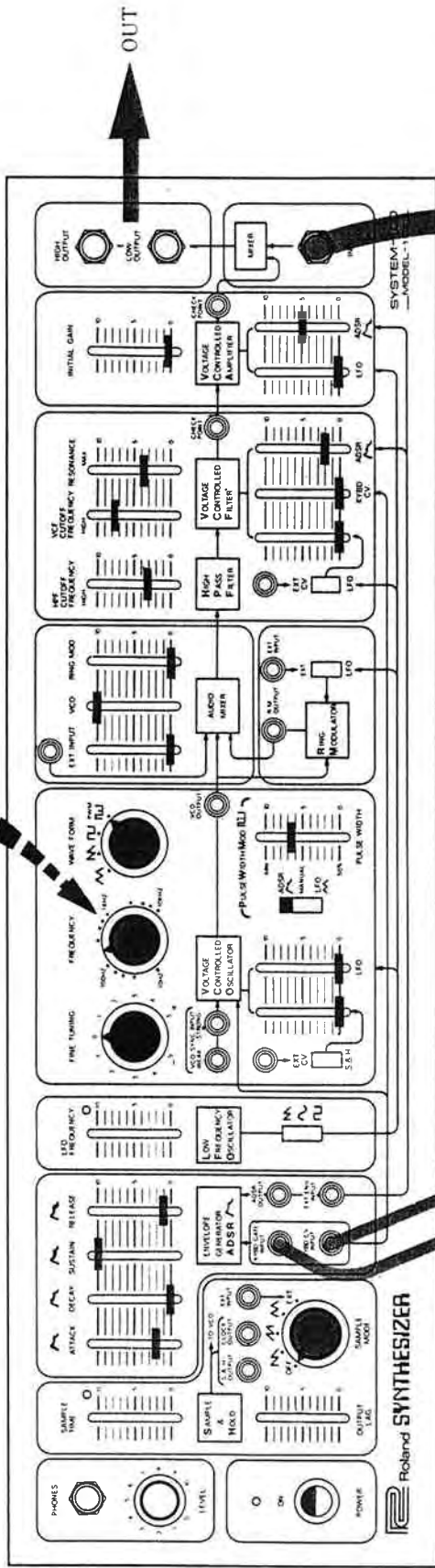
ADSR Test	25	S/H Test	26	Flute + Violin	9
AM Test	24	Snare Drum	14	Vowel Sounds	
Accordion	1	Standing Ovation	15	see : Basic Vowel Patch	3
Applause	2	Steam Locomotive	16	Wind	22
Basic Vowel Patch	3	String Orchestra	17	"You"	23
Birds	4	Sync Test, Strong	27	Video Patch	30
Bubbles	5	Sync Test, Weak	28		
Celesta	6	Sync Tone Color Experiments	29		
Clarinet	7	Test Patches	24-29		
Delayed Vibrato	8	Thunder	18		
Flute + Violin	9	Timpani	19		
French Horn	11	Tone Color Experiments, Sync	29		
Cong	10	Tornado	20		
Horn	11	VCO Strong Sync Test	27		
Locomotive, Steam	16	VCO Weak Sync Test	28		
Oboe	12	Vibraphone	21		
Ring Modulator	13	Vibrato, Delayed	8		

TEST PATCHES

AM Test	24
ADSR Test	25
S/H Test	26
Sync Test, Strong	27
Sync Test, Weak	28
Sync Tone Color Experiments	29

Tune to one octave below VCO-1

(VCO-1 の 1 オクターブ下 : 220Hz にセット)

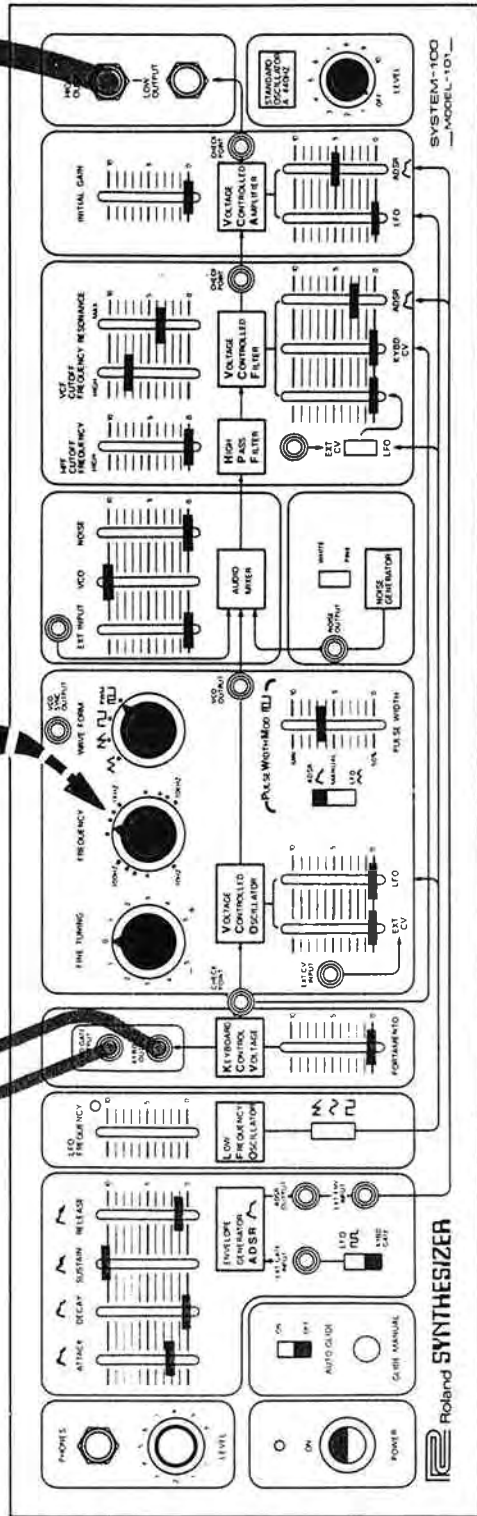


102

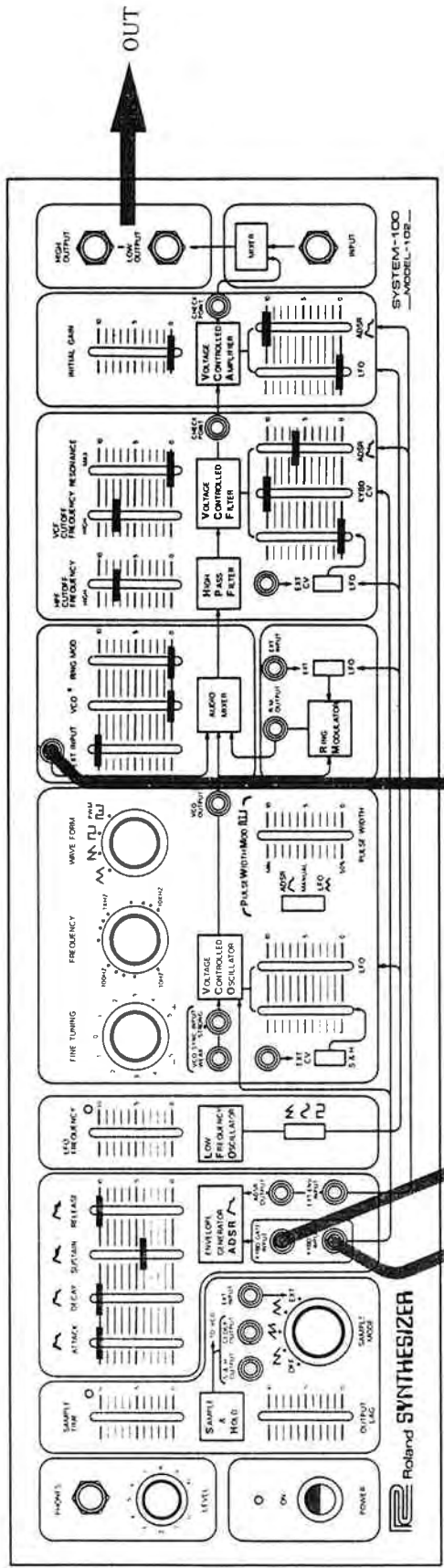


Set at 440Hz.

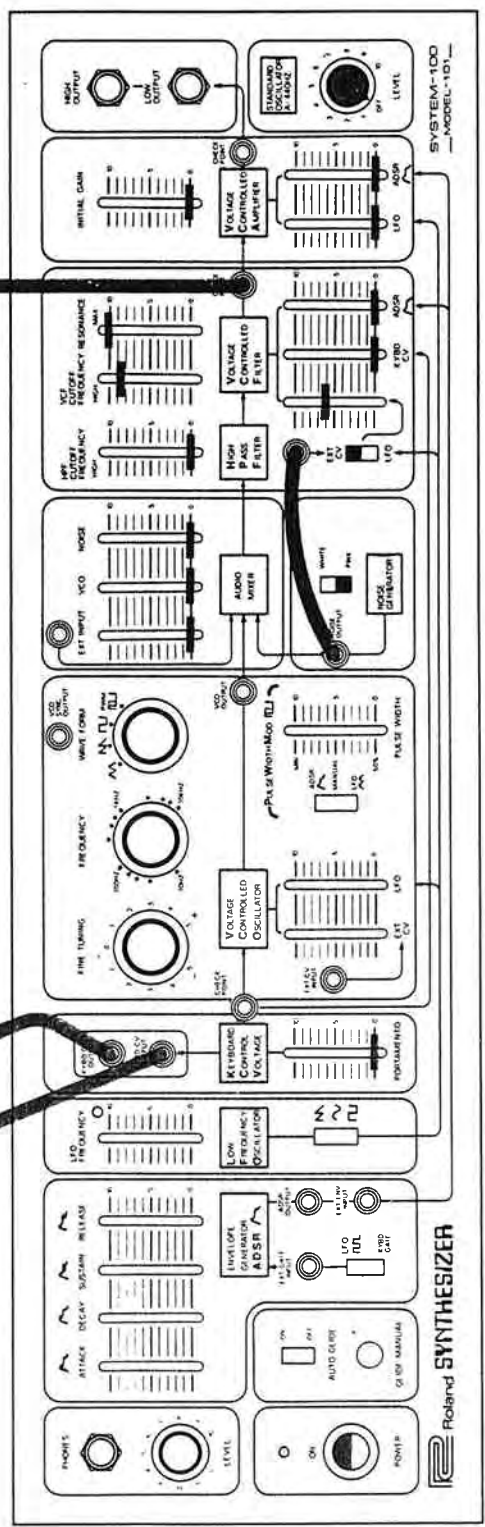
(440Hz にセット)



101

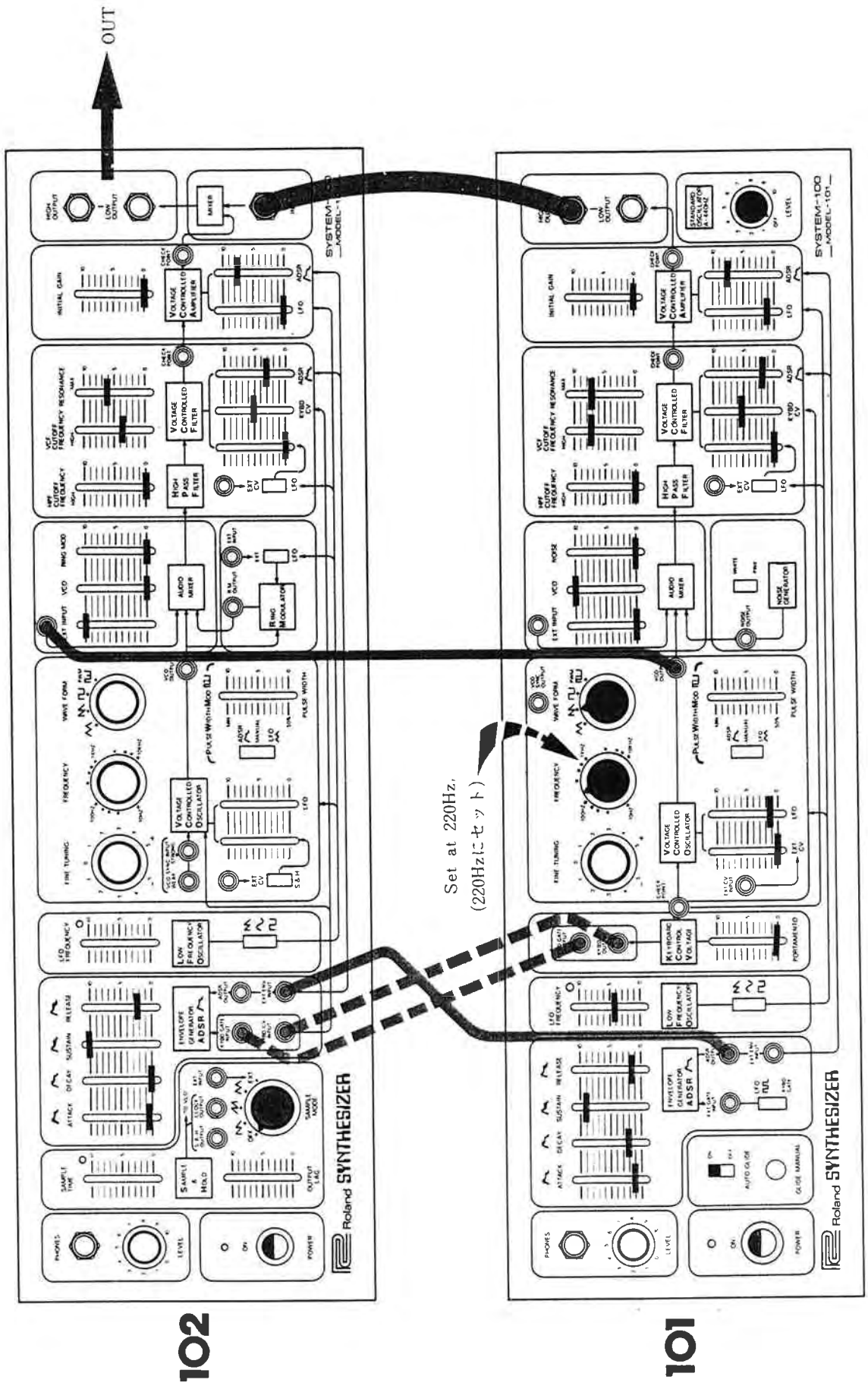


102



101

Press a key on the keyboard to produce applause.
(キーを押すと拍手音が出ます。)

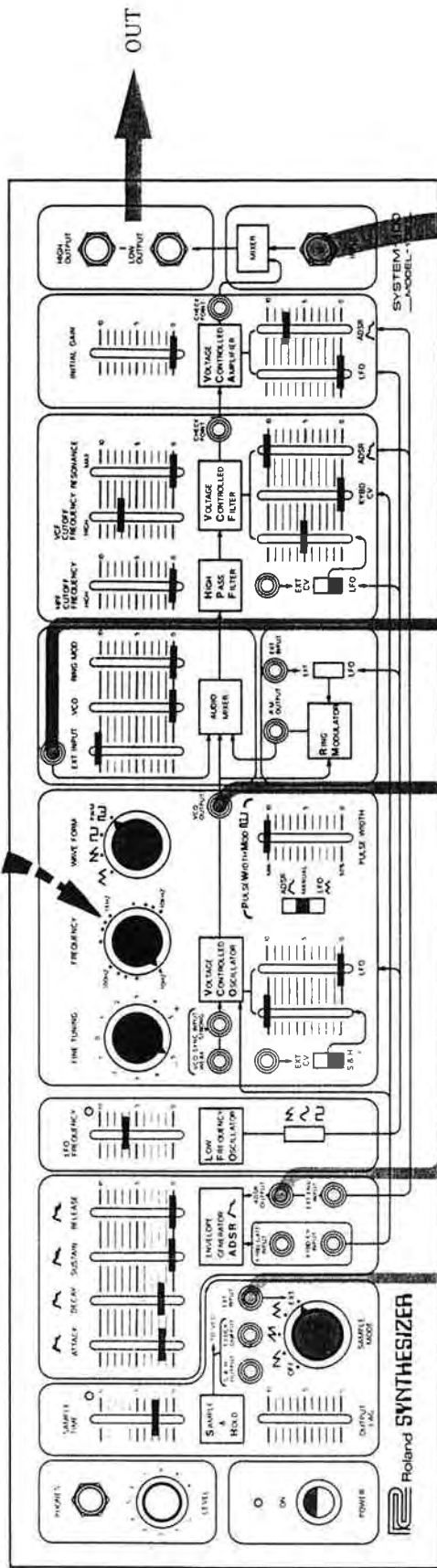


102

101

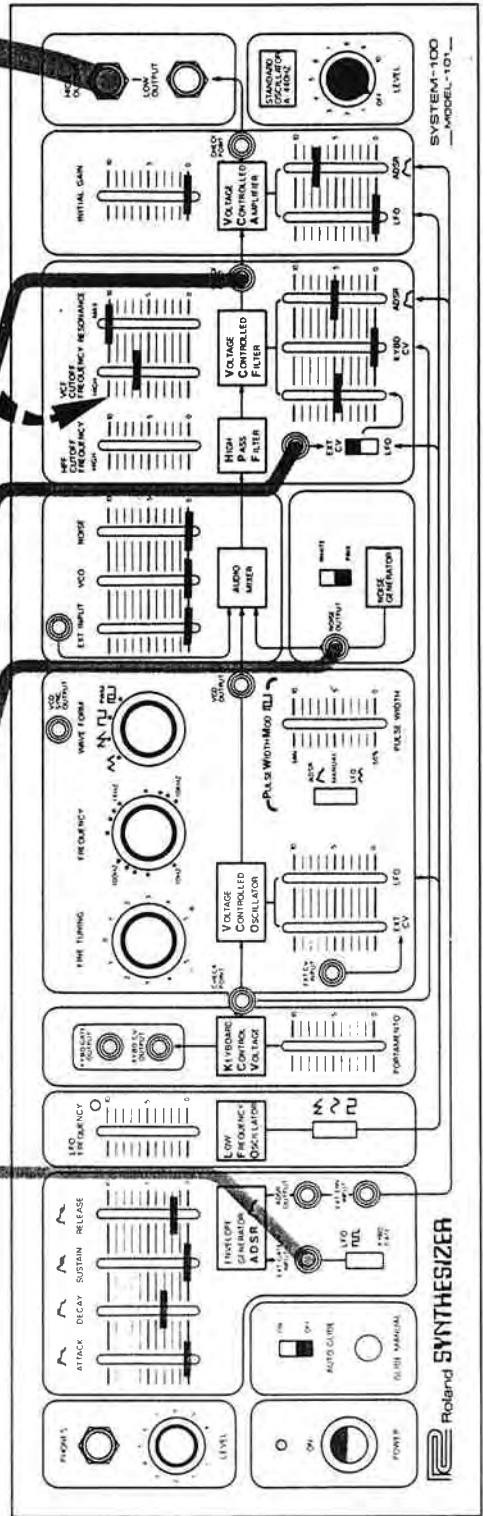
This patch will require a lot of experimenting, especially with the VCF settings.
(フィルター部のセッティングによって、さまざまなバリエーションをつくり出すことができます。)

Set near lowest point
(10Hzぐらいの低い周波数にセット)



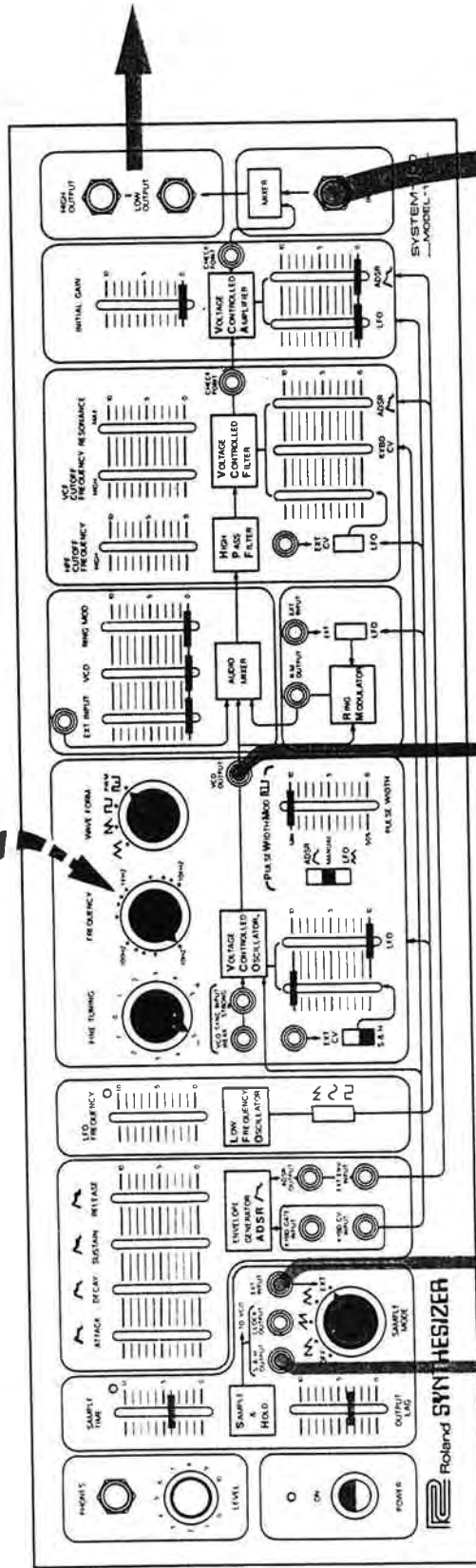
102

Decides average pitch
(適切な高さにセットします。)

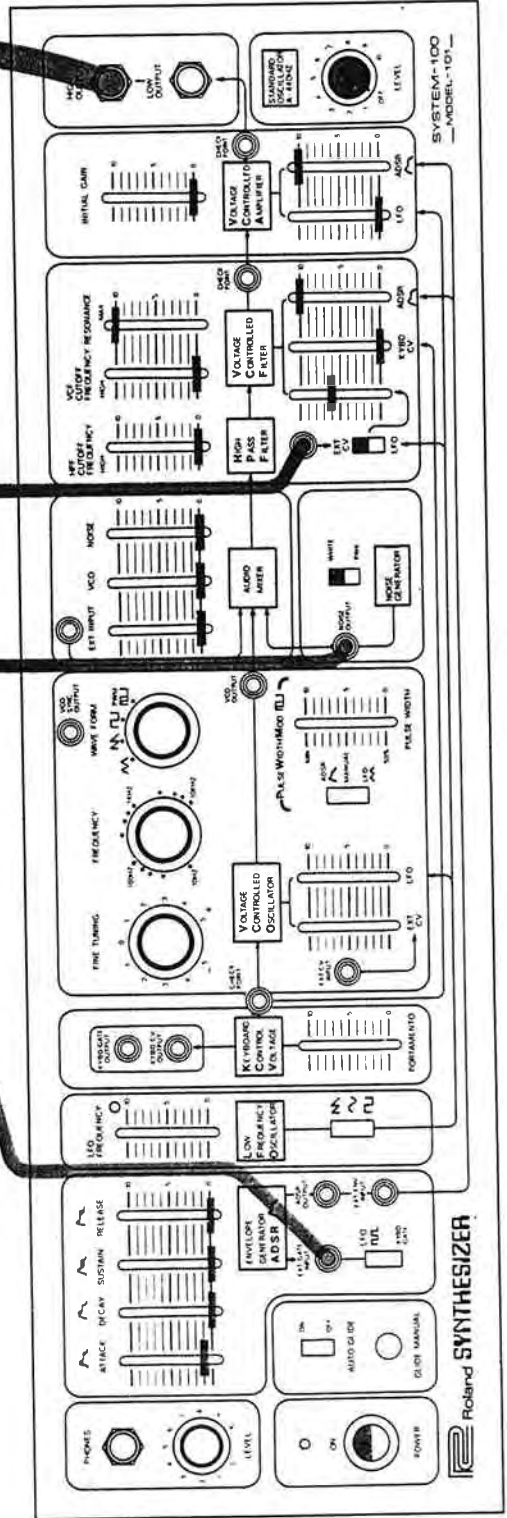


101

Set near lowest point
 (10Hzぐらいの低い周波数にセット)



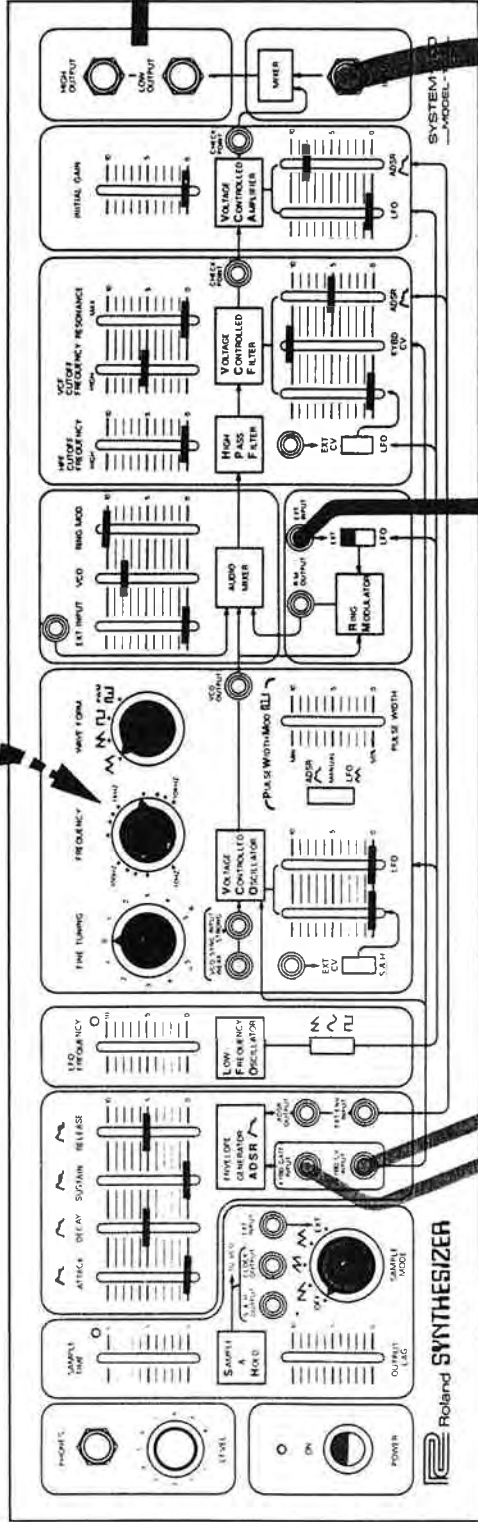
102



101



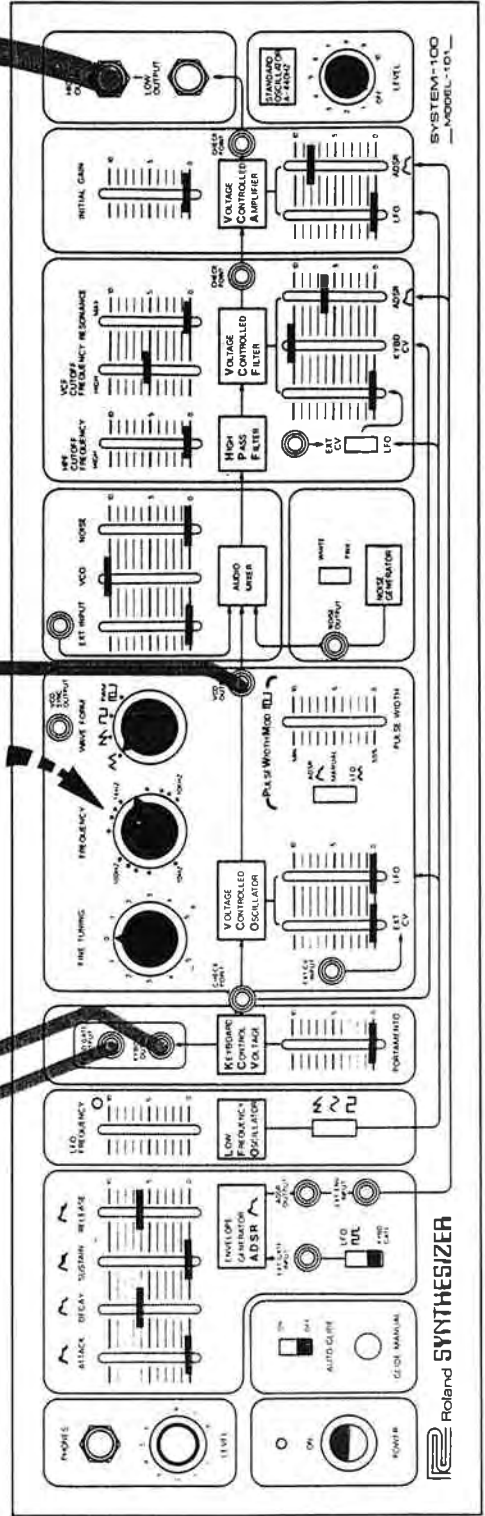
Tune to a major third above VCO-1
(VCO-1の長3度にセット)



102

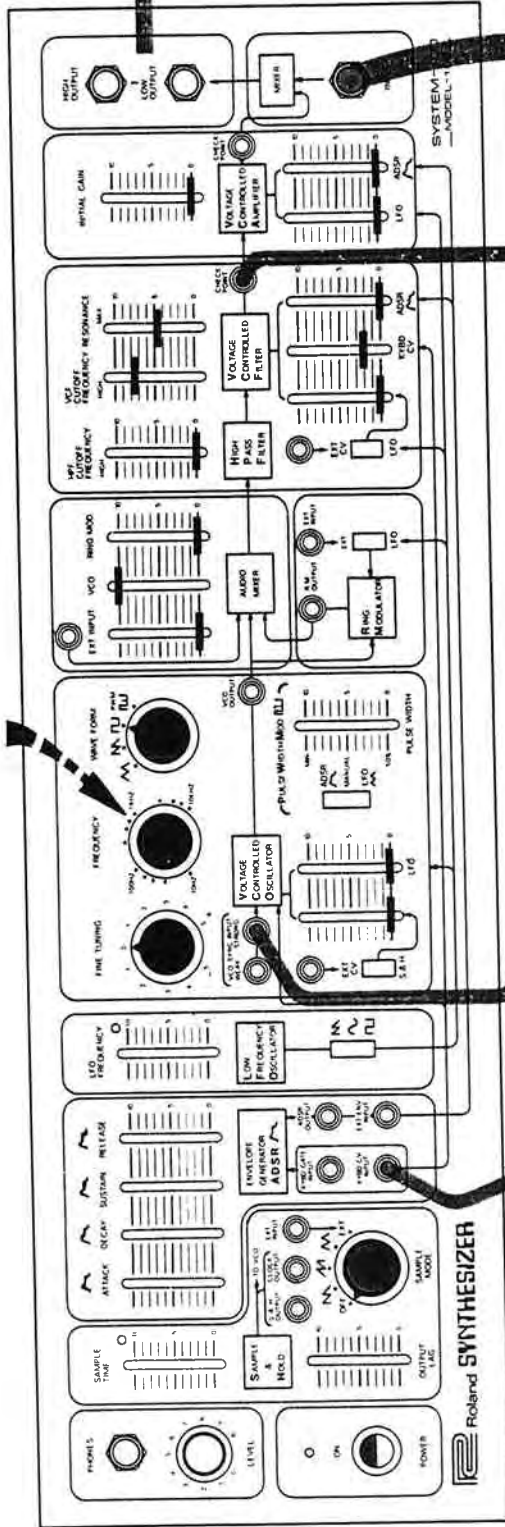


Set at 1760Hz
(1760Hzにセット)

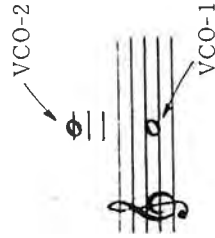


101

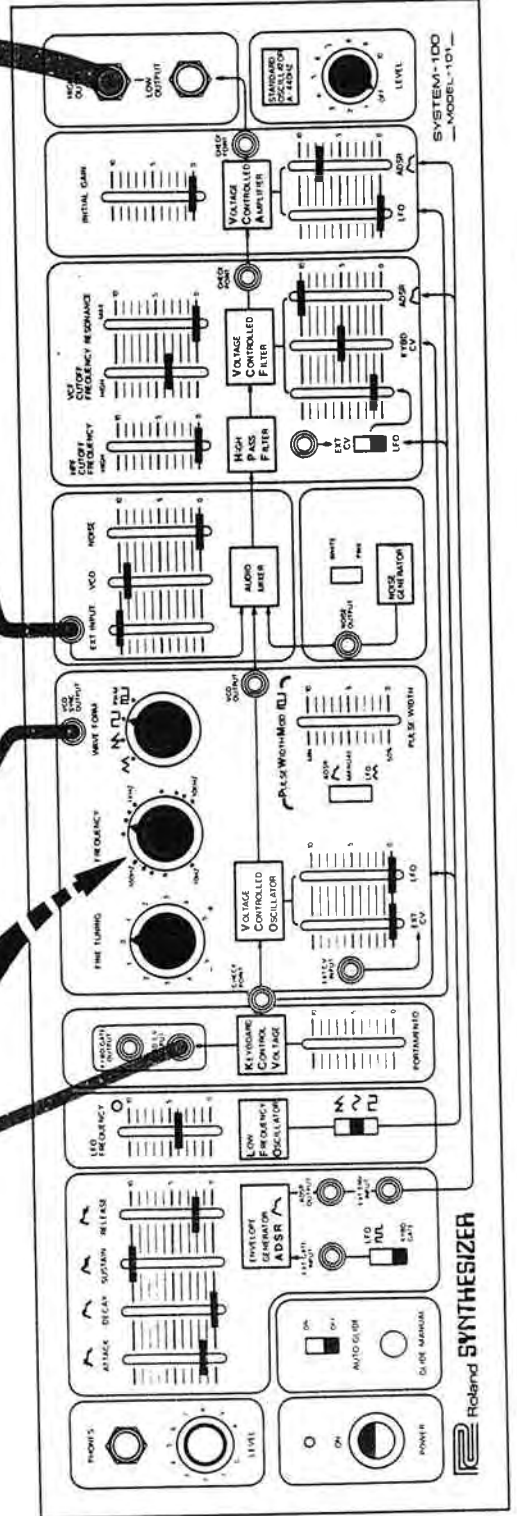
Tune to one octave and a fifth above VCO-1
(VCO-1より1オクターブと5度高くセット)



102



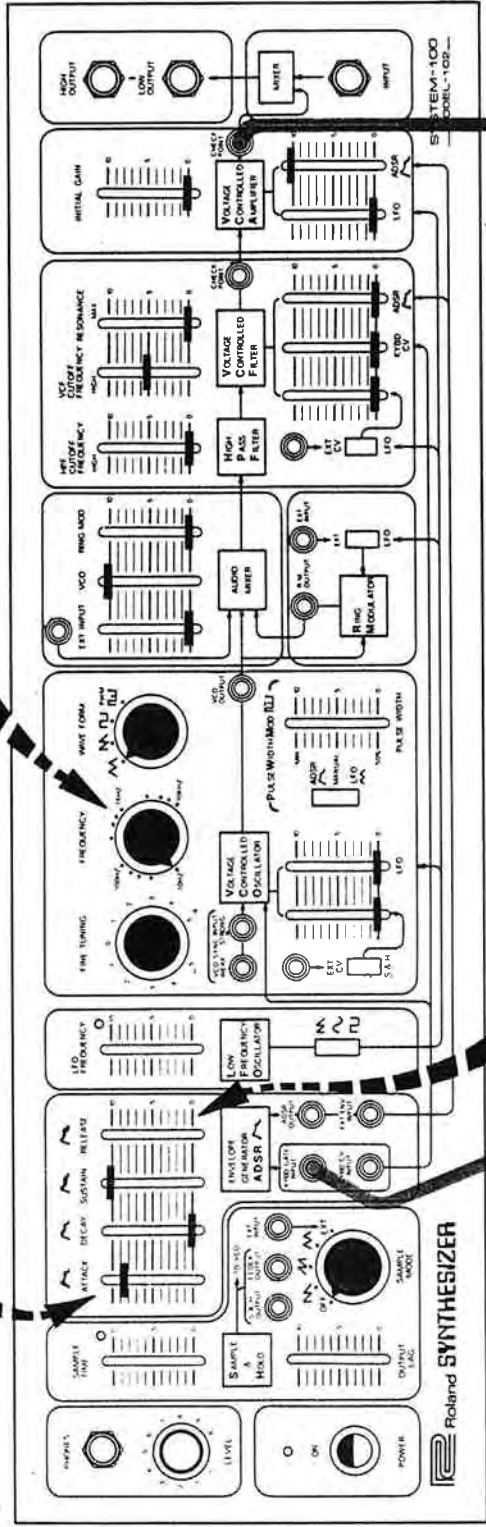
Set at 440Hz
(440Hzにセット)



101

Controls amount of delay
(ディレイ・タイムをコントロールします)

VCO-2 FREQUENCY controls vibrato rate
(ビブラートの速さをコントロールします)

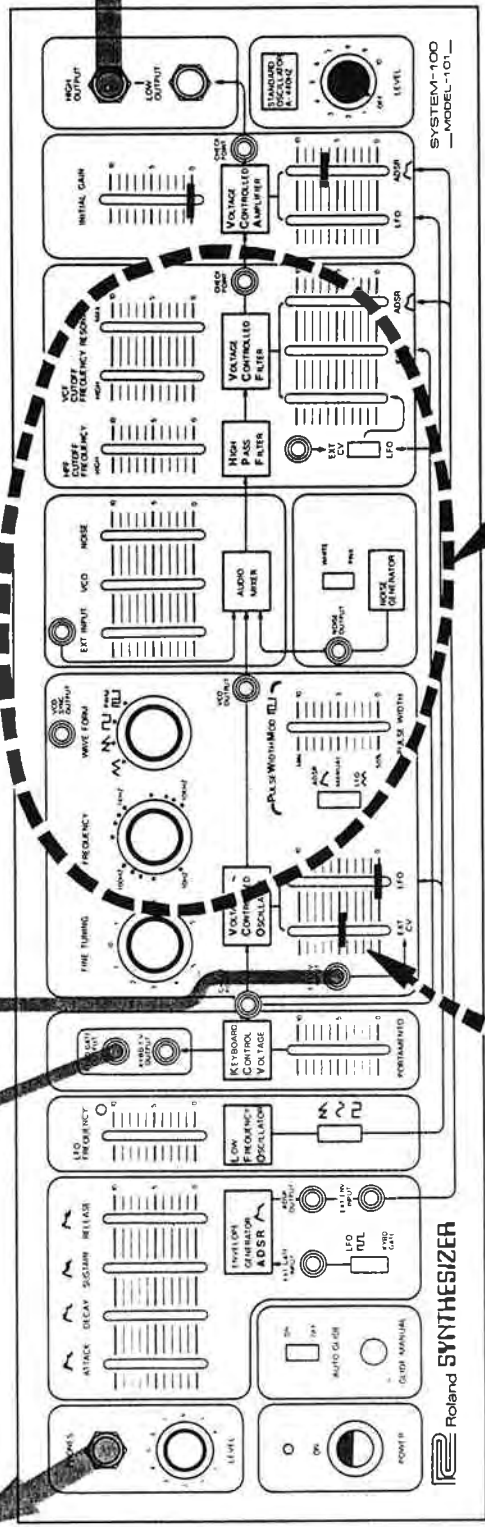


102

Monitor here

(ディレイ効果をモニターする場合はここを使います。)

Set RELEASE same as ADSR-1
(基本ユニットのパッチと同じ目盛りにセット)

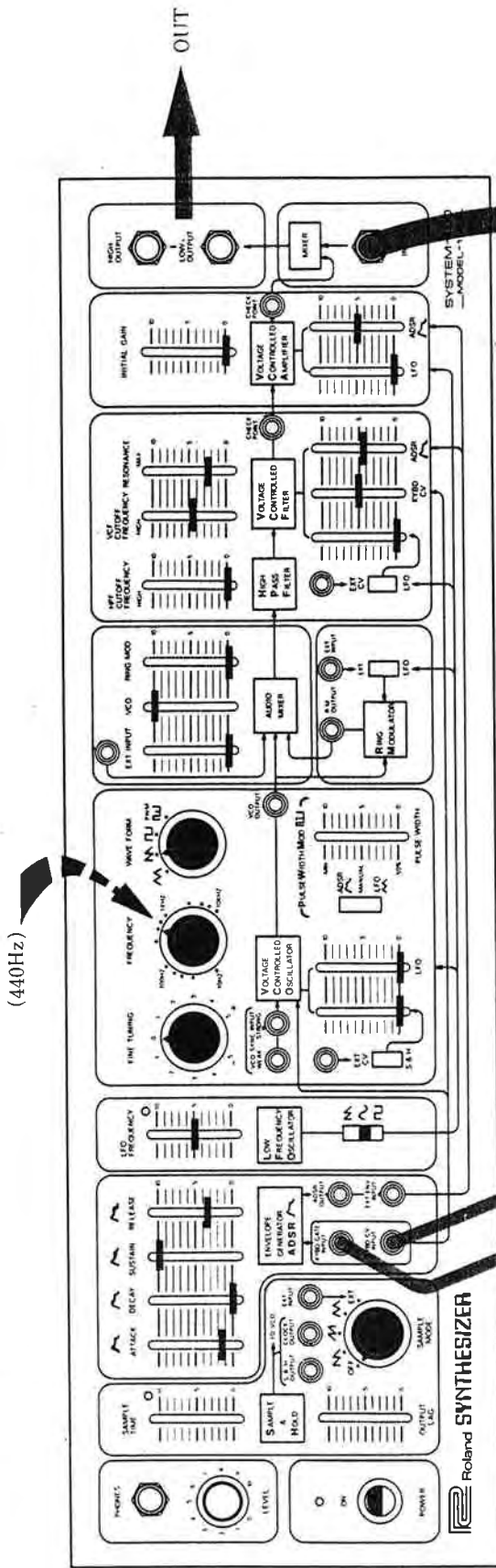


101

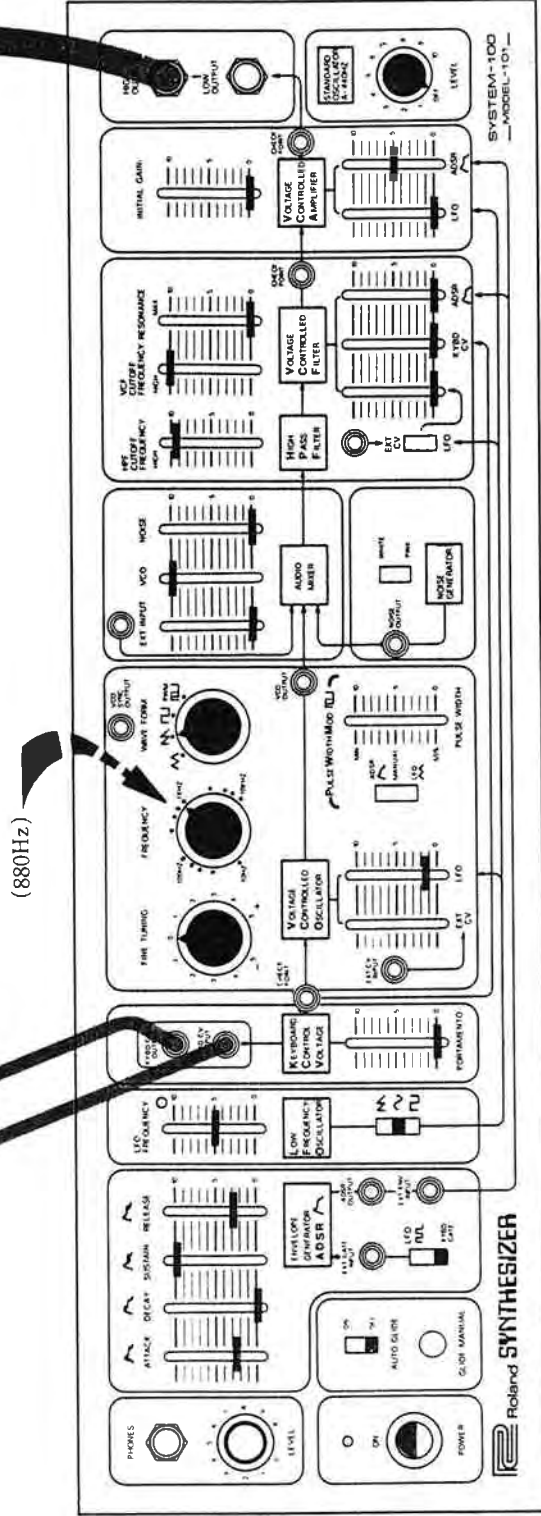
Controls intensity of vibrato
(ビブラートの深さをコントロールします)

Set other controls for any patch
(何かのパッチにセットします)

OUT

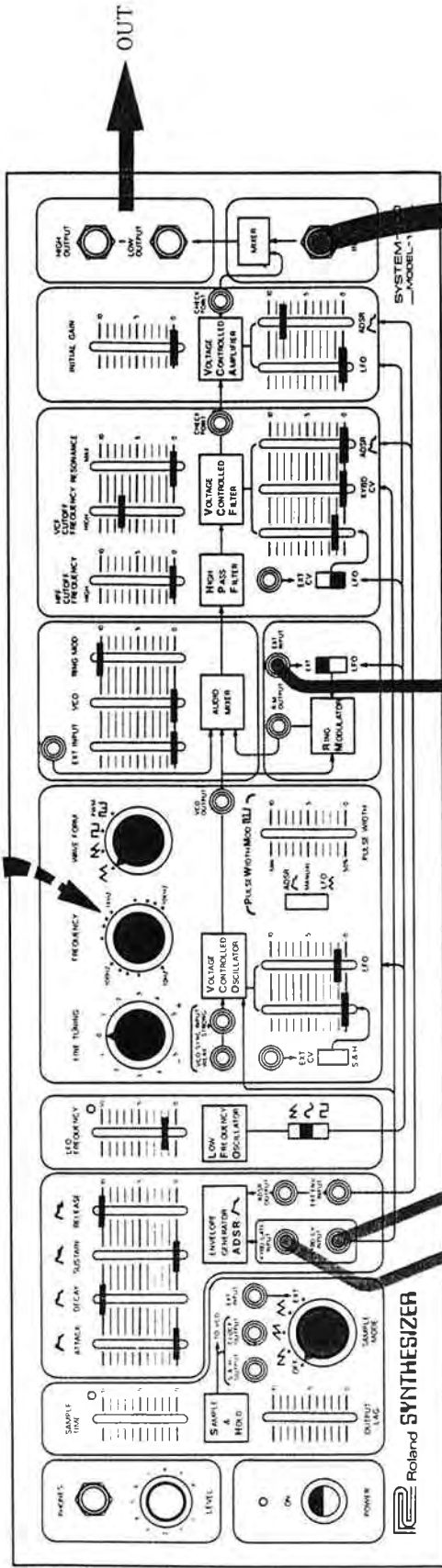


102

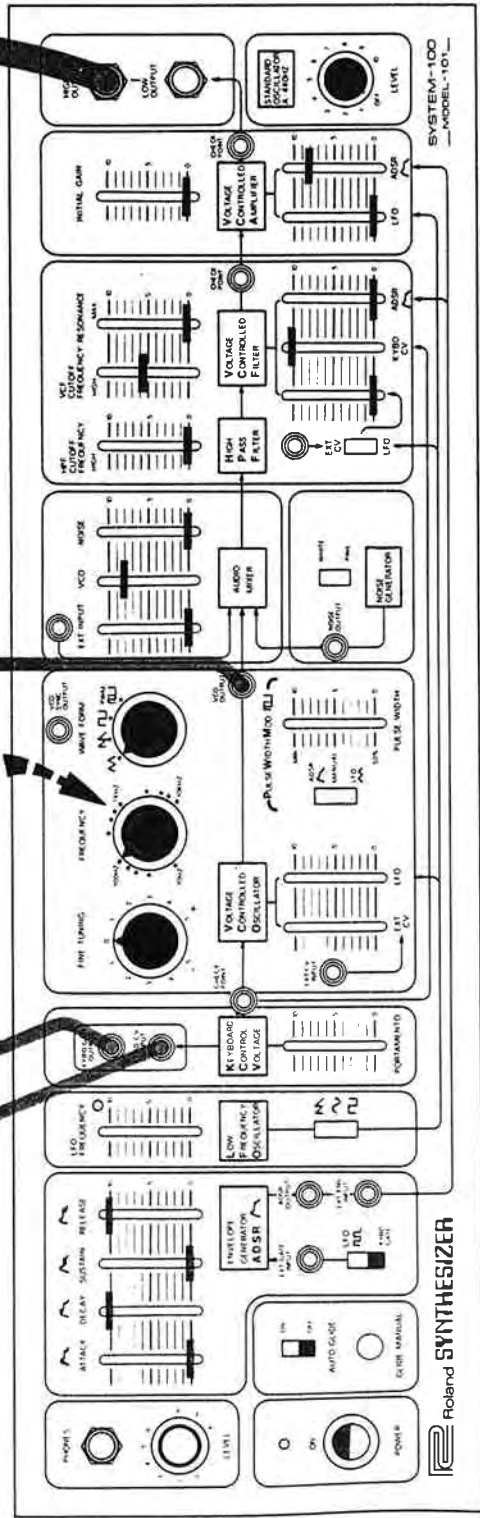


101

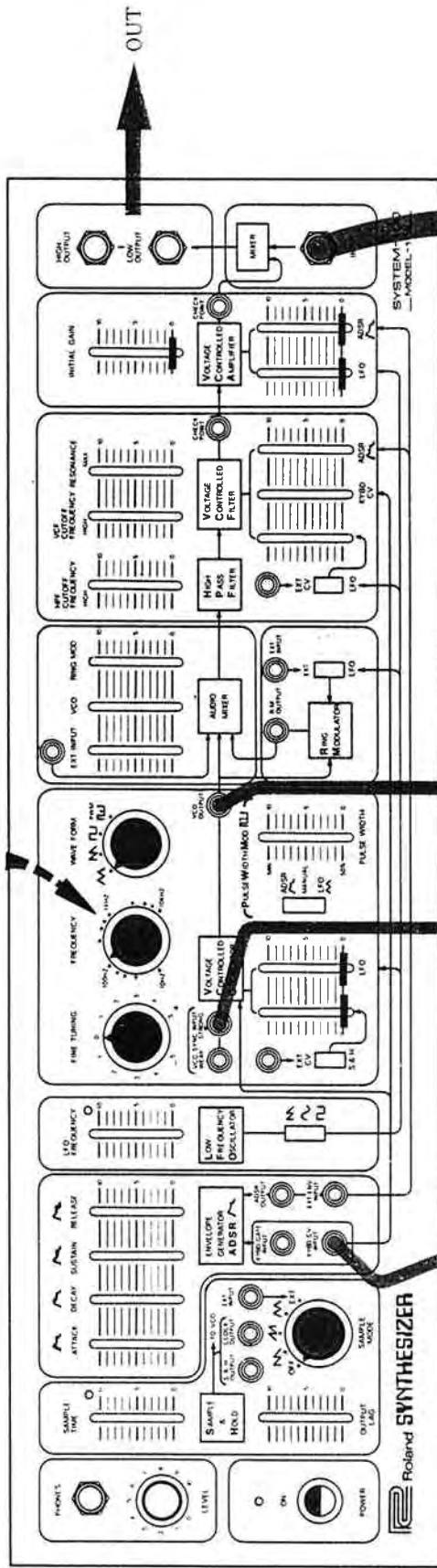
Tune to perfect fourth above VCO-1
(VCO-1の完全4度上にセット)



Set at 100Hz
(100Hzにセット)

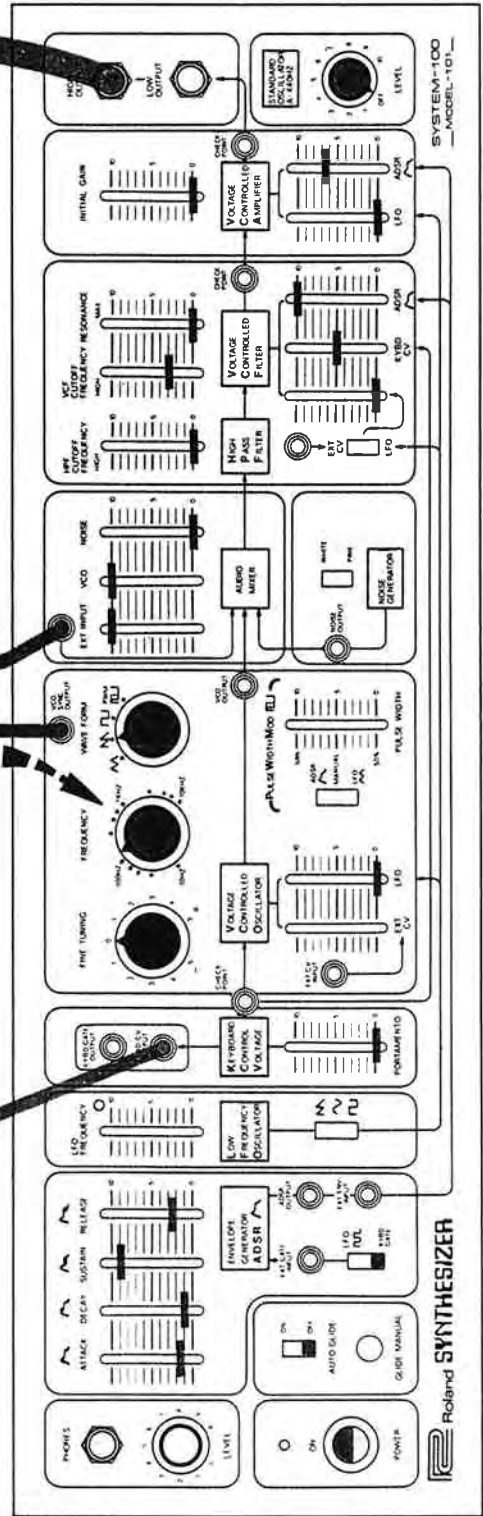


Tune to unison with VCO-1 before inserting sync patch cord
 (シンクロのパッチコードを接続する前にVCO-1とユニゾン:220Hzにセット)

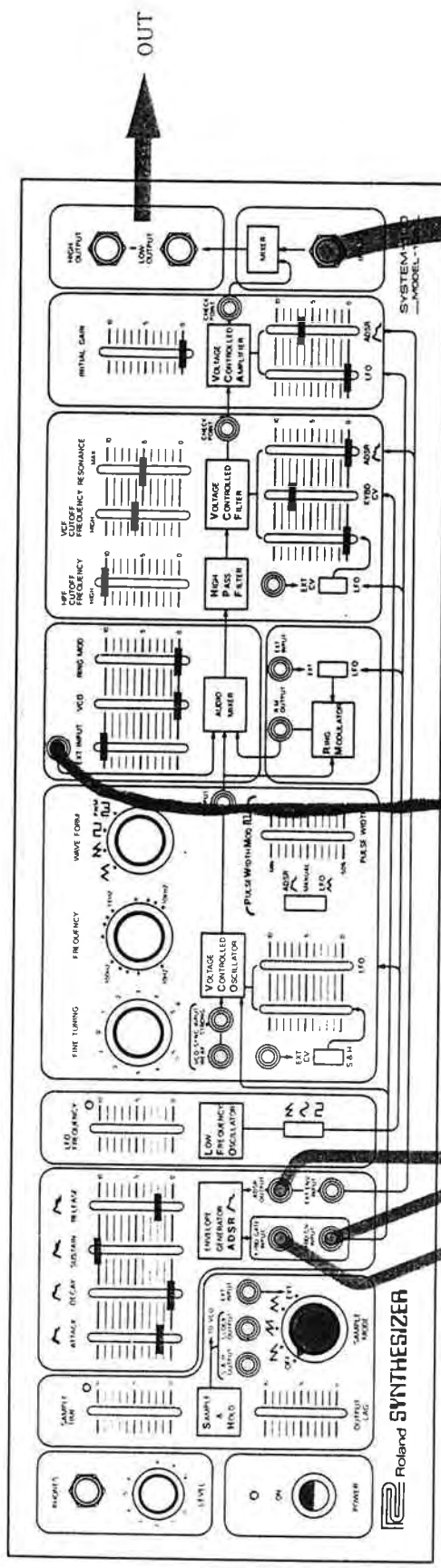


102

Set at 220Hz
 (220Hzにセット)

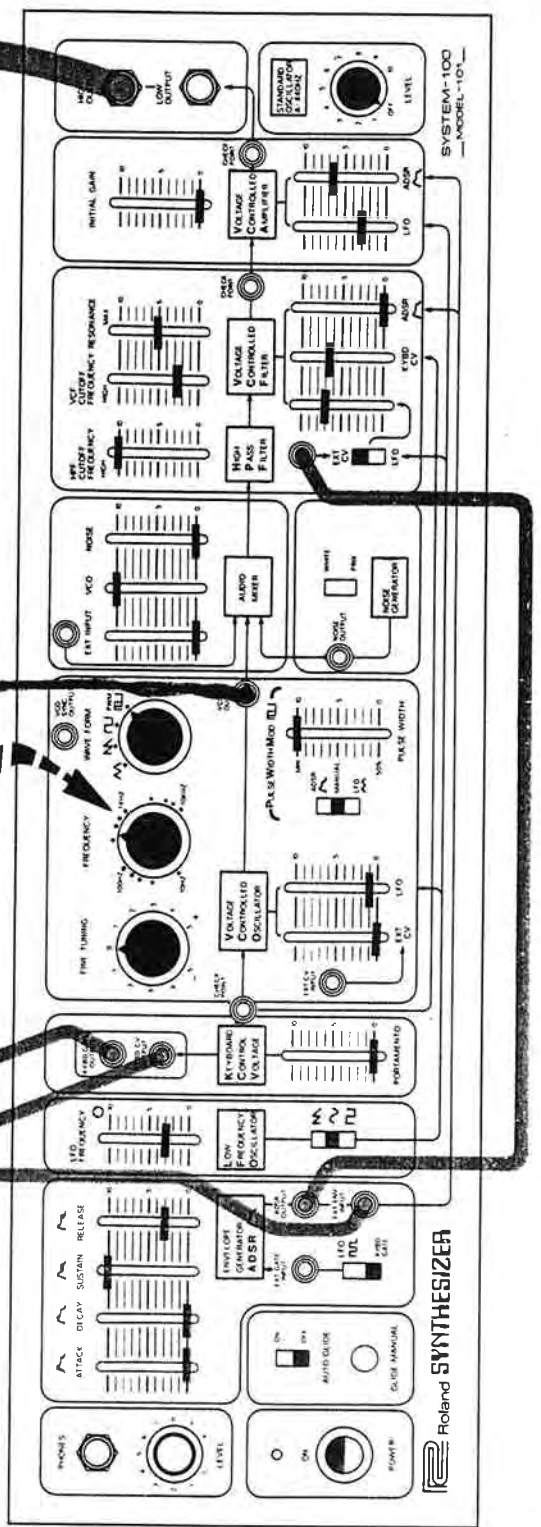


101

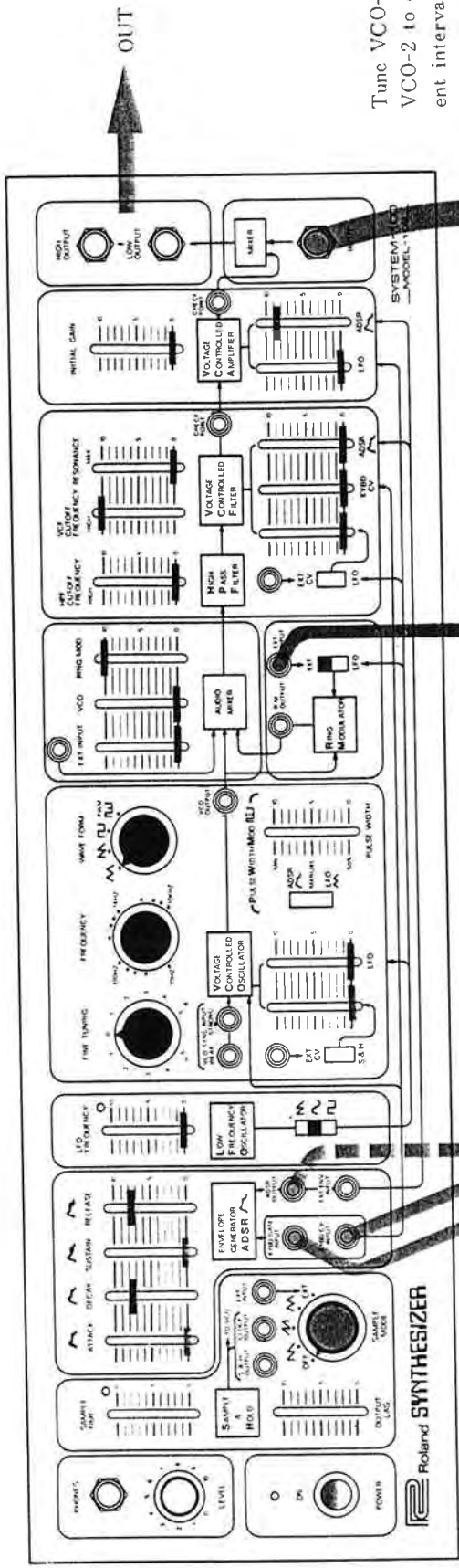


102

Set at 440Hz
 (440Hzにセット)

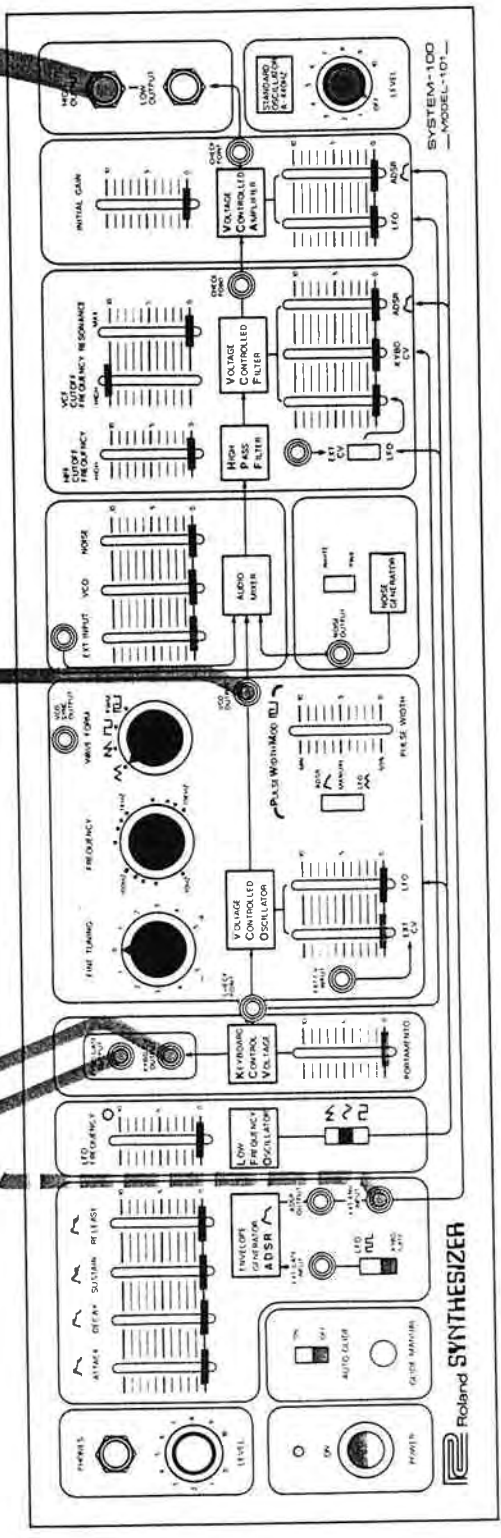


101



Tune VCO-1 and VCO-2 to different intervals in relationship to each other.

VCO-1とVCO-2は違ったピッチにセットし、好みのサウンドが得られるところを探してください。



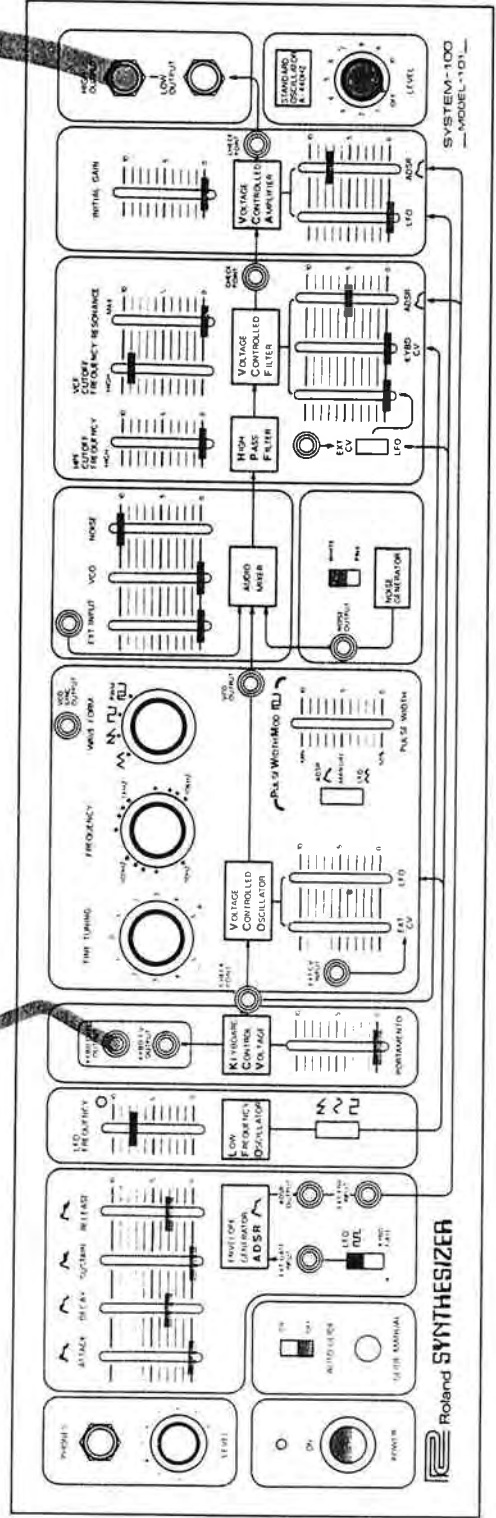
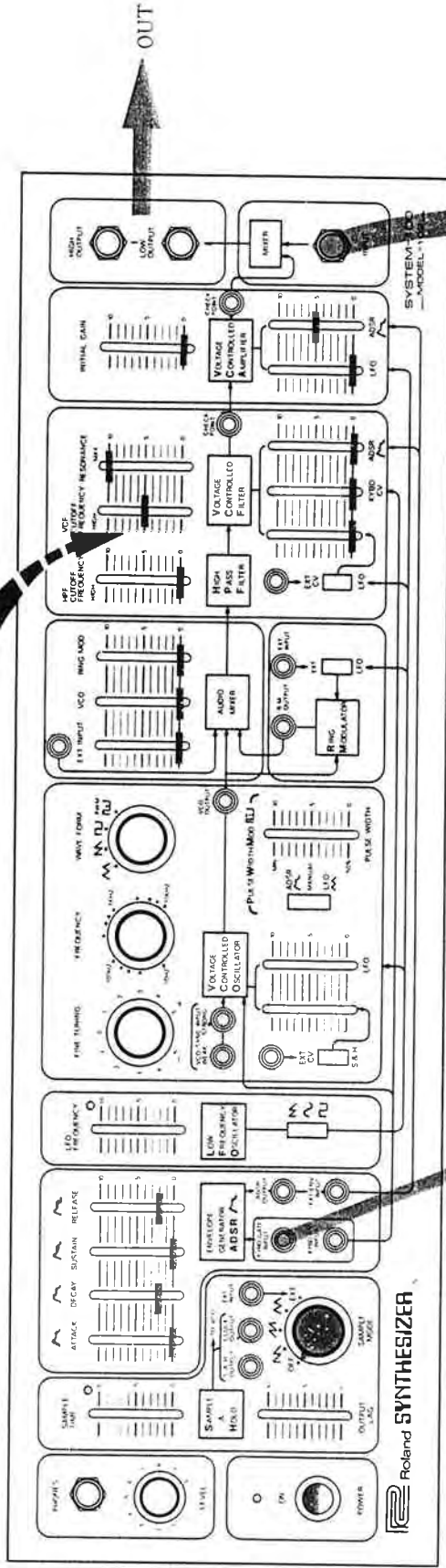
Try all the blue controls for a wide variety of bell-like sounds. (青く表示されたつまみを変化させて、さまざまな音のバリエーションをつくってください。)

PATCH 14

SNARE DRUM

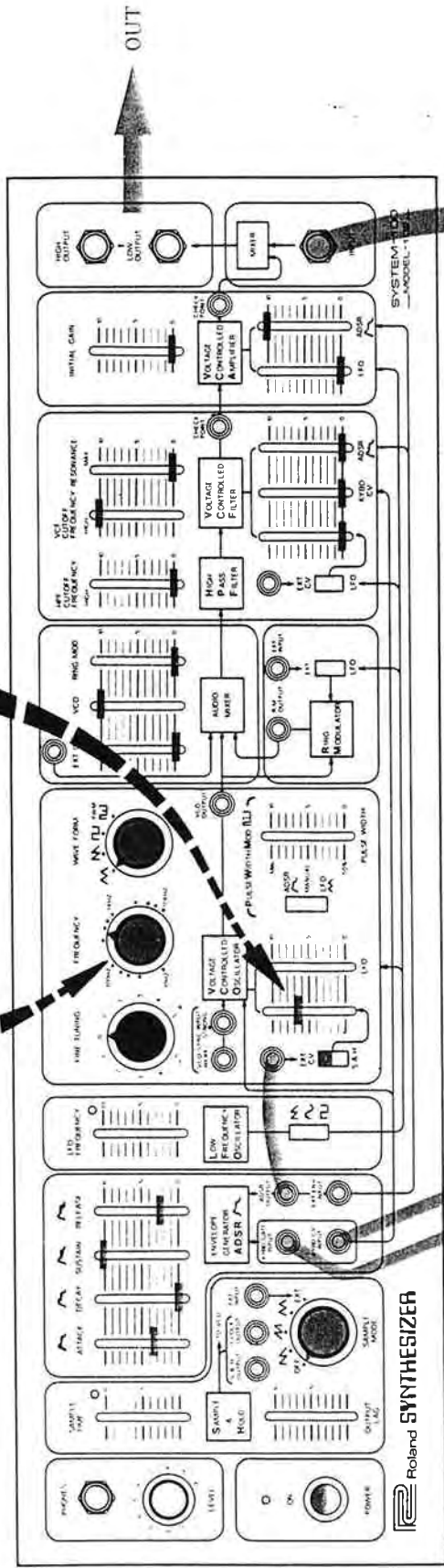
(スナア ドラム)

Drum "tone" control
 (ドラムのトーンをコントロールできます)

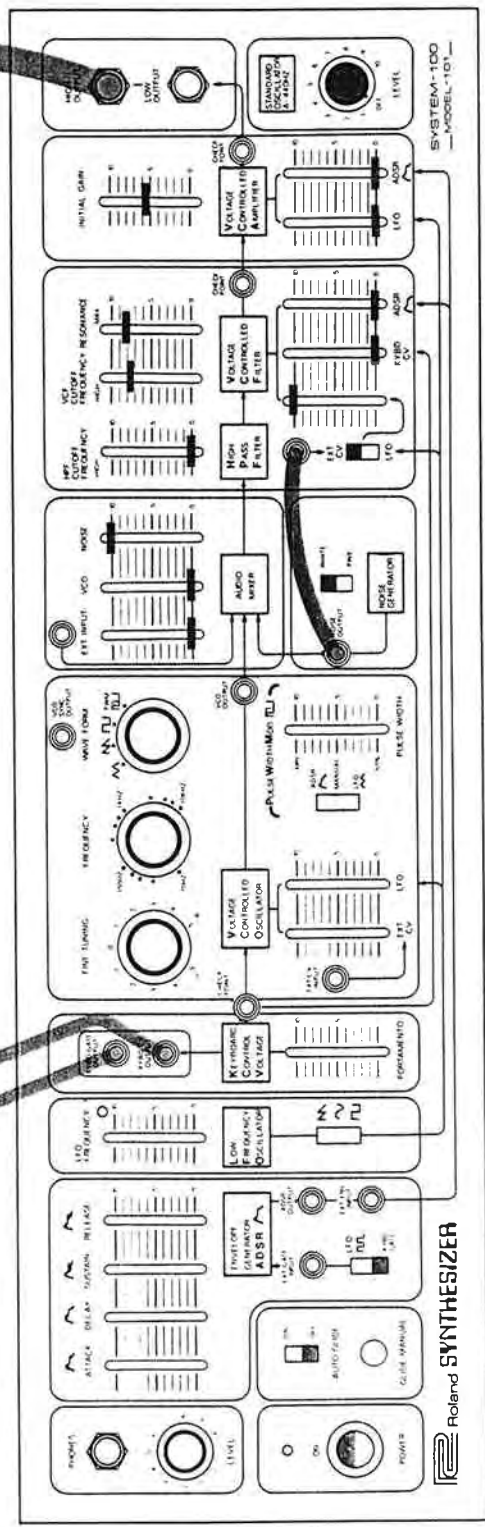


PATCH 15
STANDING OVATION
 (歓声 喝采)

Tune VCO-2 to 440Hz. before raising the EXT. CV/S & H slider
 (EXT. CVコントロールを「0」にして、440Hzにセツトします)



102

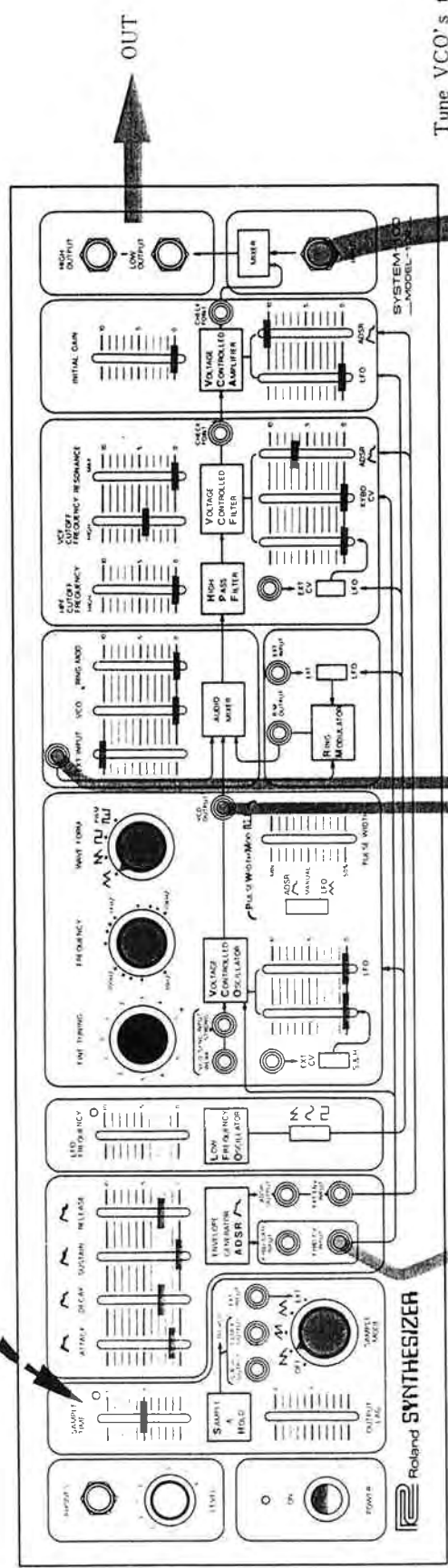


101

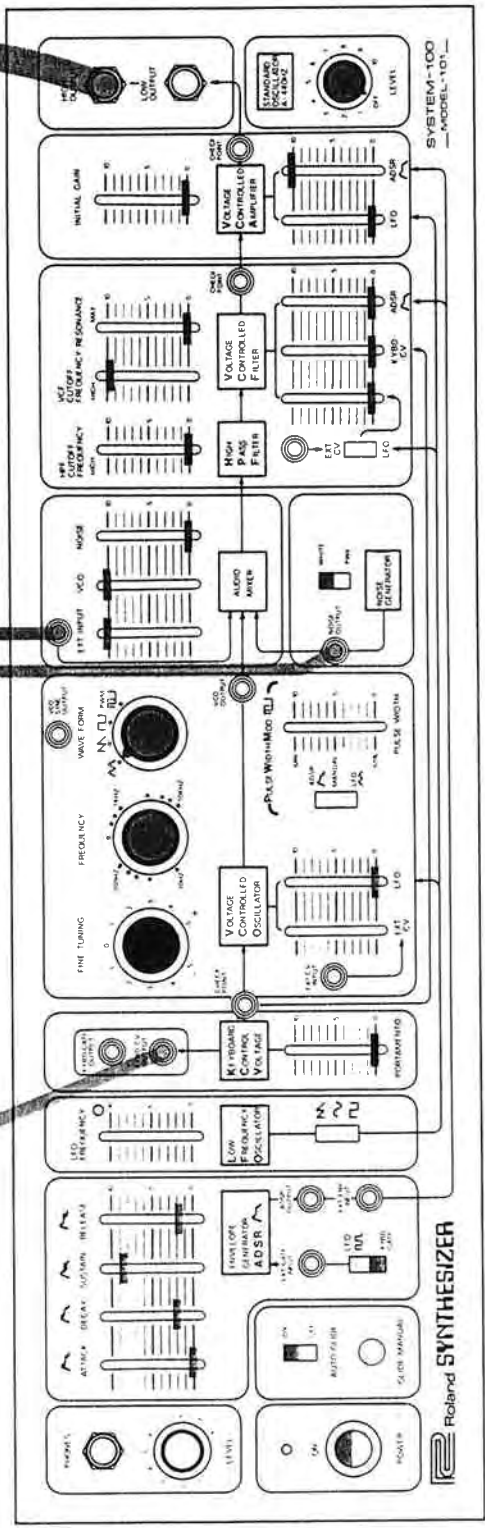
Press different keys on the keyboard.
 (キーによって喝采の感じが変わります)



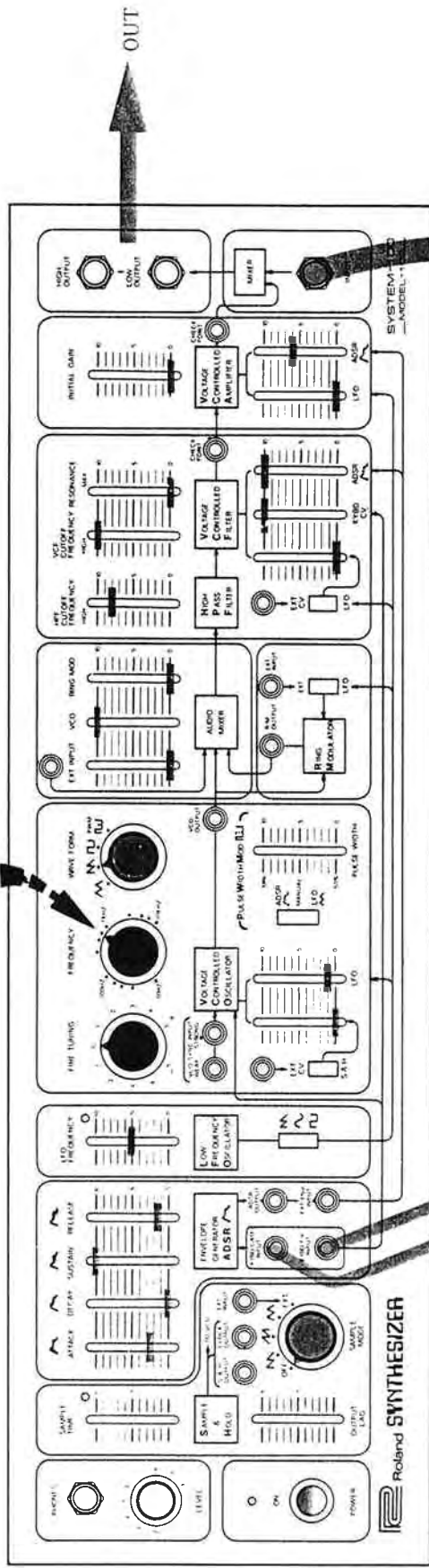
Locomotive speed control
(蒸気機関車のスピードをコントロールします)



Tune VCO's to the interval of a perfect fourth.
(VCO-1とVCO-2を完全4度のピッチにセッティングしてください。)

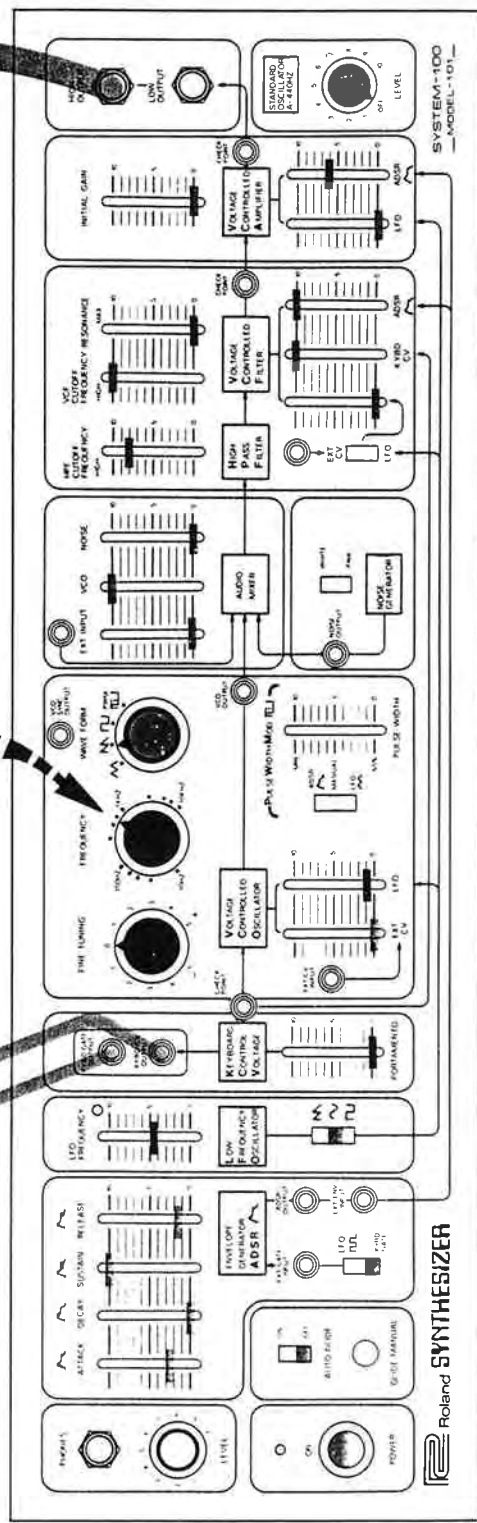


Press key for whistle
(キーを押すと汽笛が出ます)

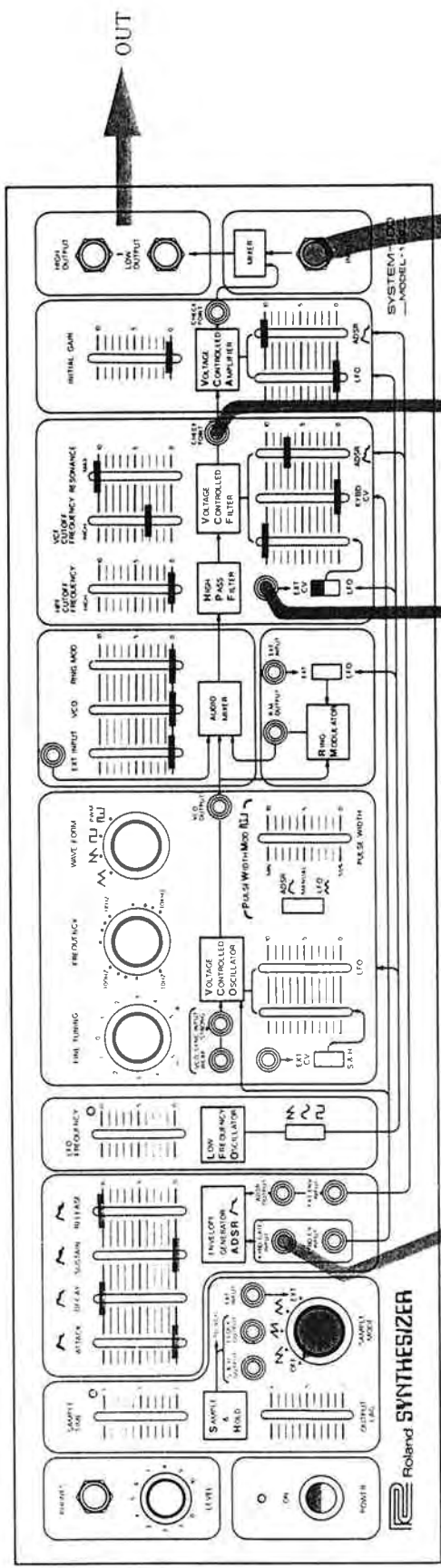


102

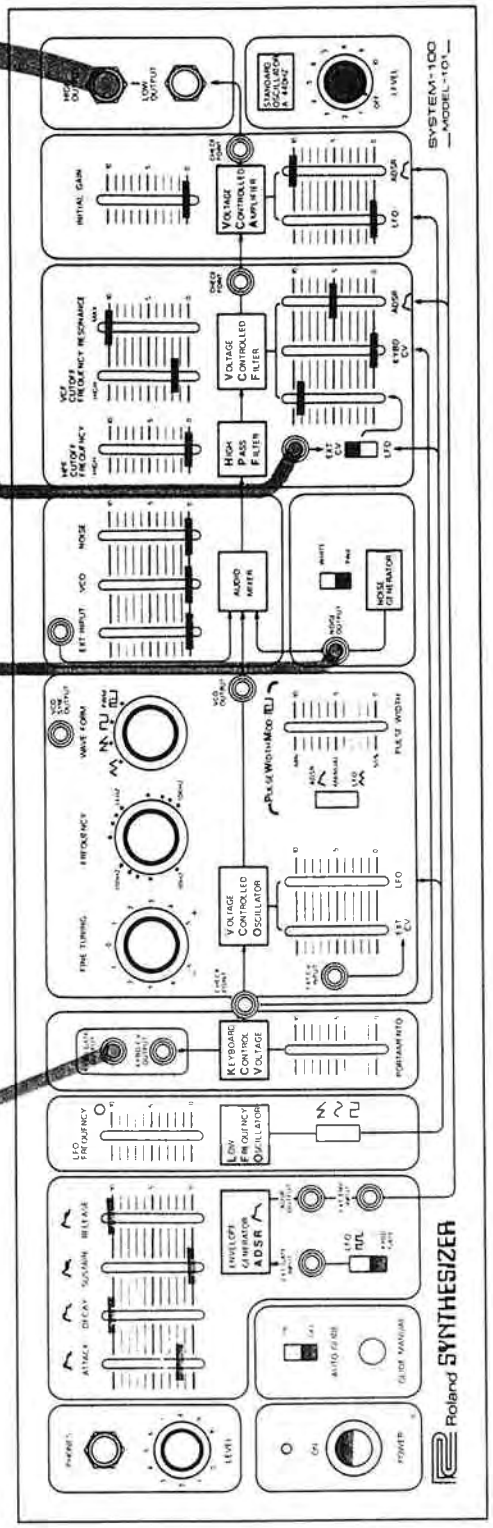
Set LFO's at slightly different rates.
 (2つのLFOのフリケンシーをわずかにずらします。)



101



102

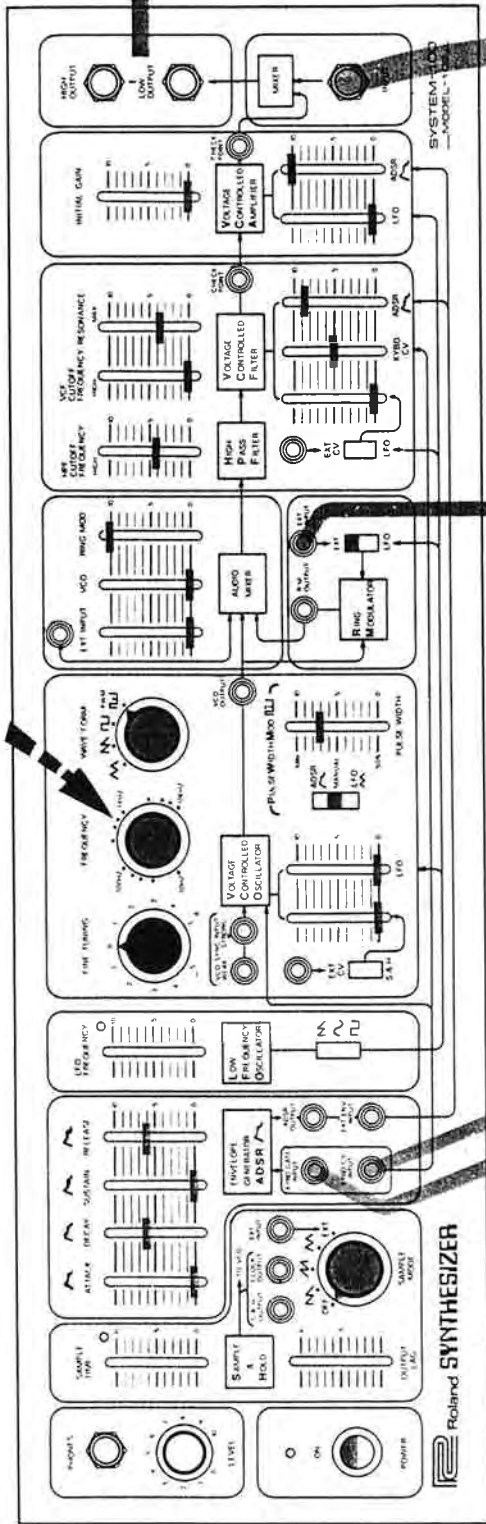


101

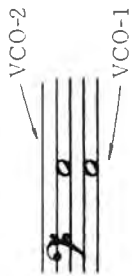
PATCH 19

ROMPANI

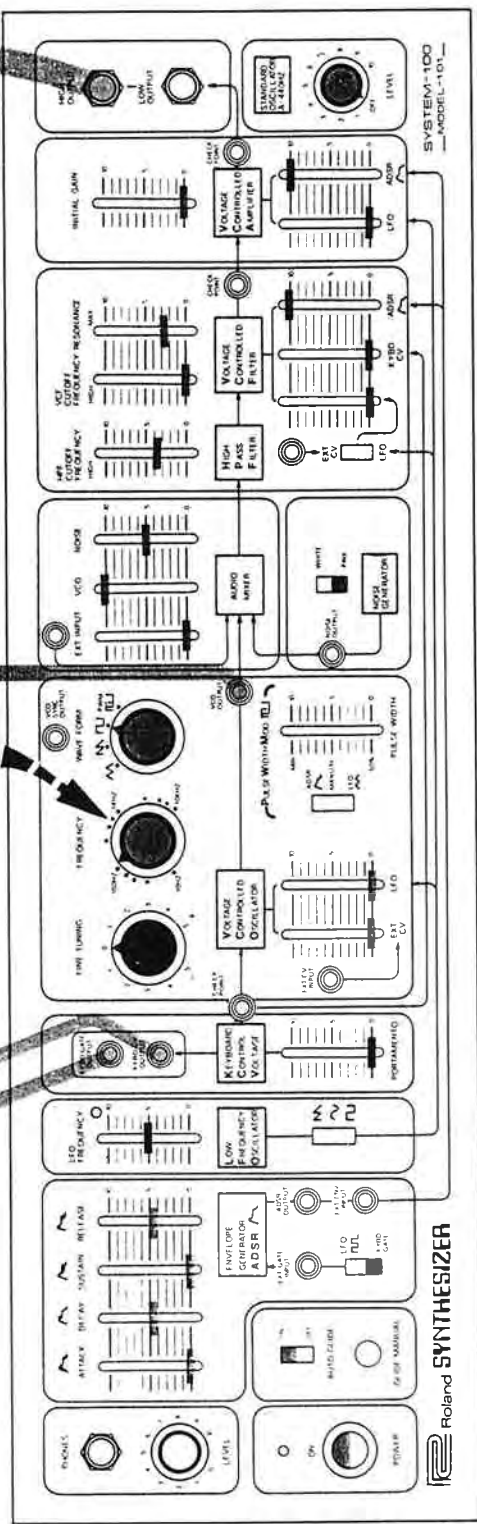
Tune to a perfect fifth above VCO-1
(VCO-1の完全5度上にセット)



1 102

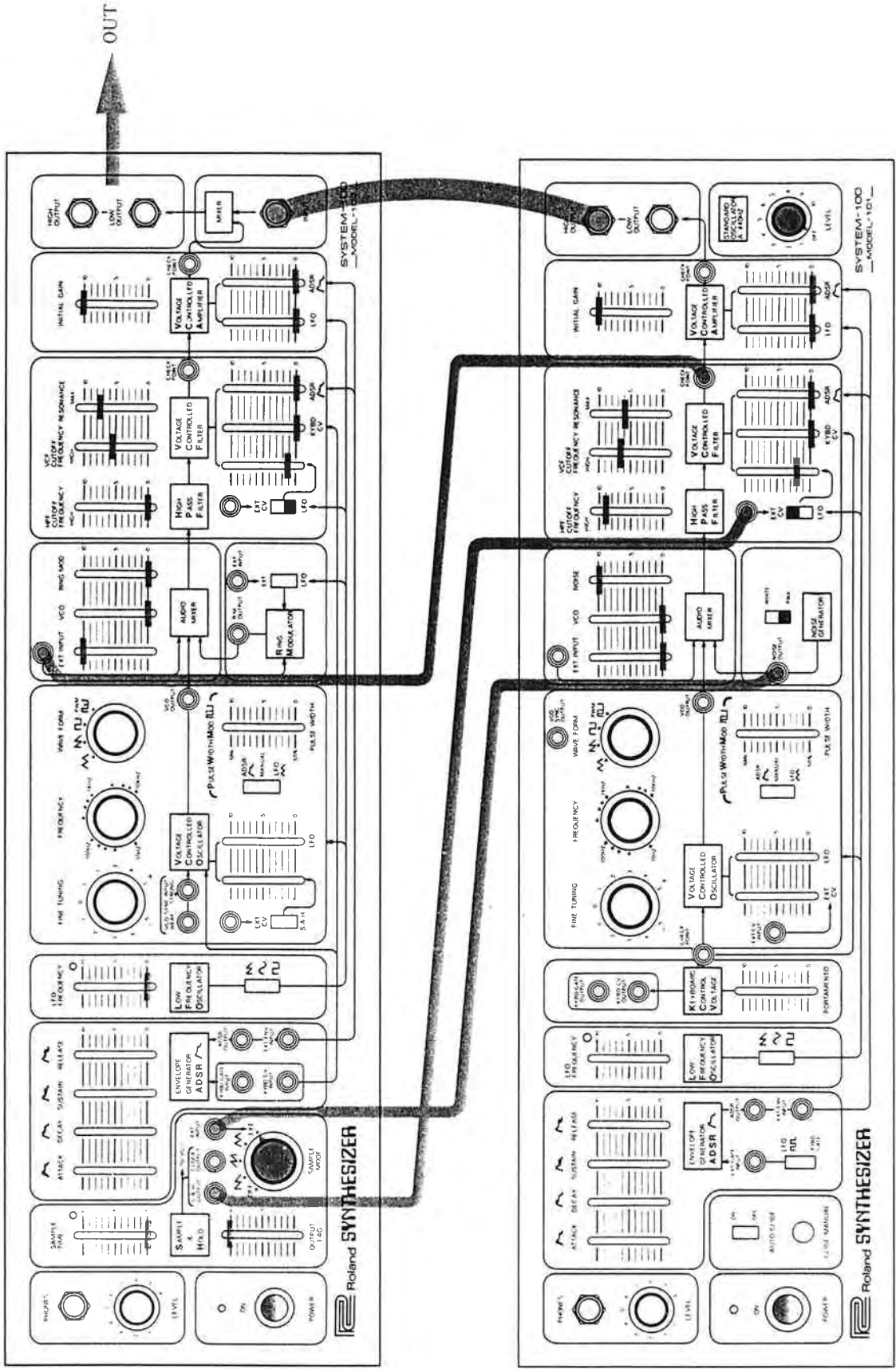


Set at 110Hz.
(110Hzにセット)

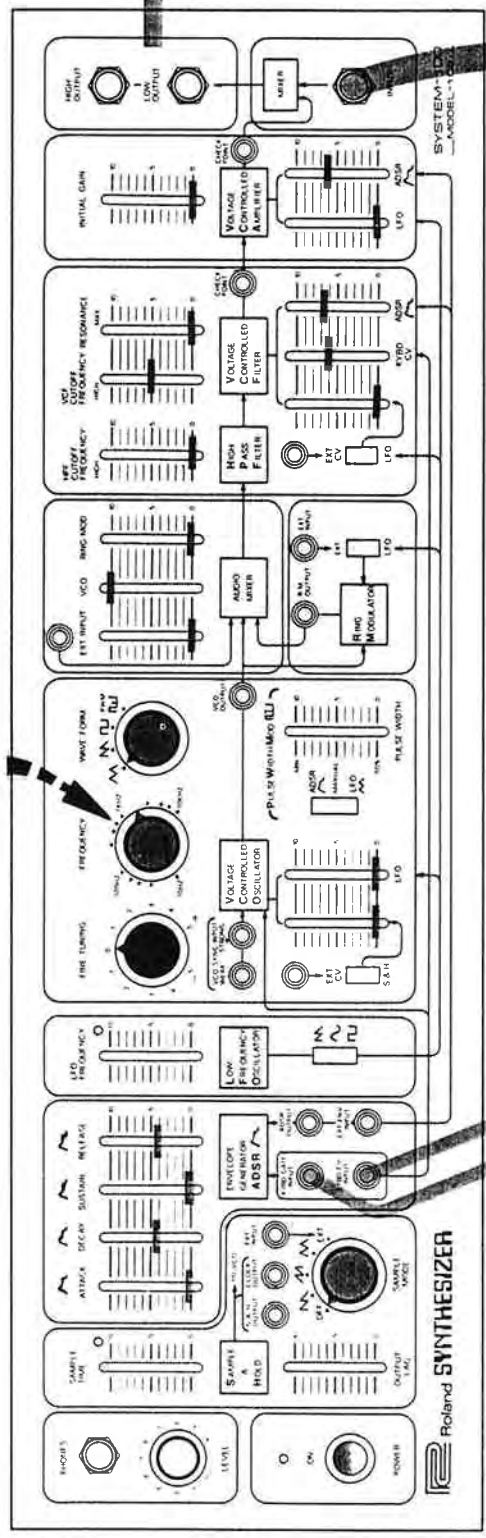


1 101

The best drum sound is produced when the two VCO's are slightly mistuned.
(2つのVCOの完全5度の音程はわずかにずれていた方が太鼓の音は良くなります。)

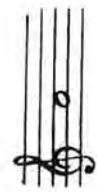


Tune to two octaves above VCO-1
(VCO-1の2オクターブ上 : 1720Hzにセット)

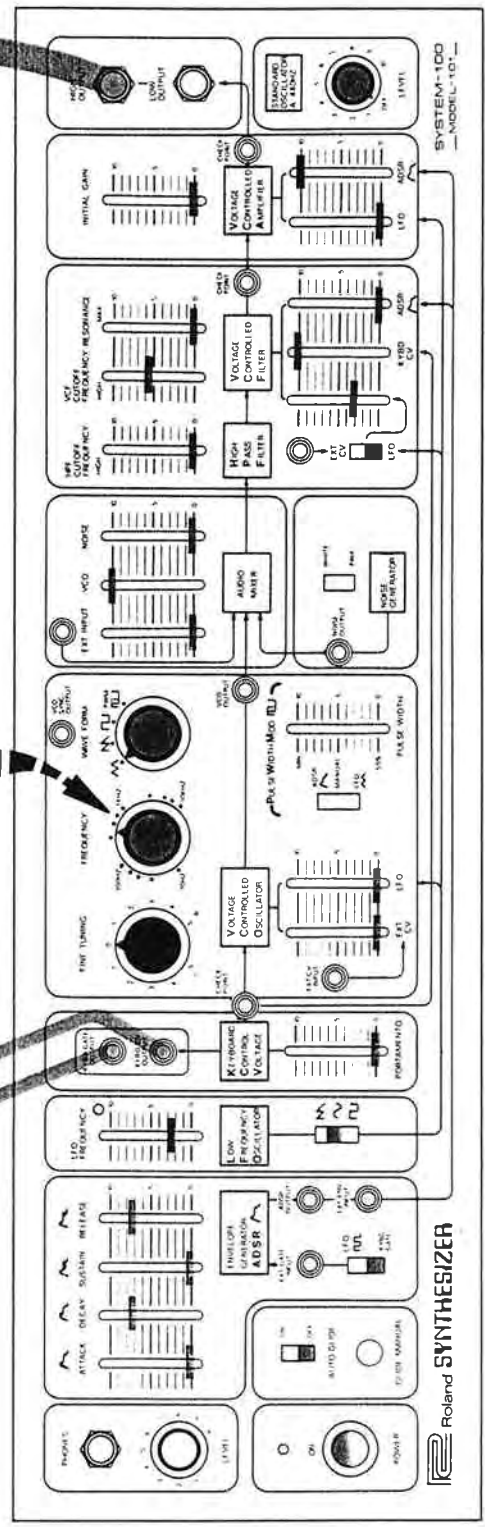


1 102

VCO-1:

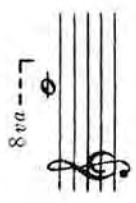


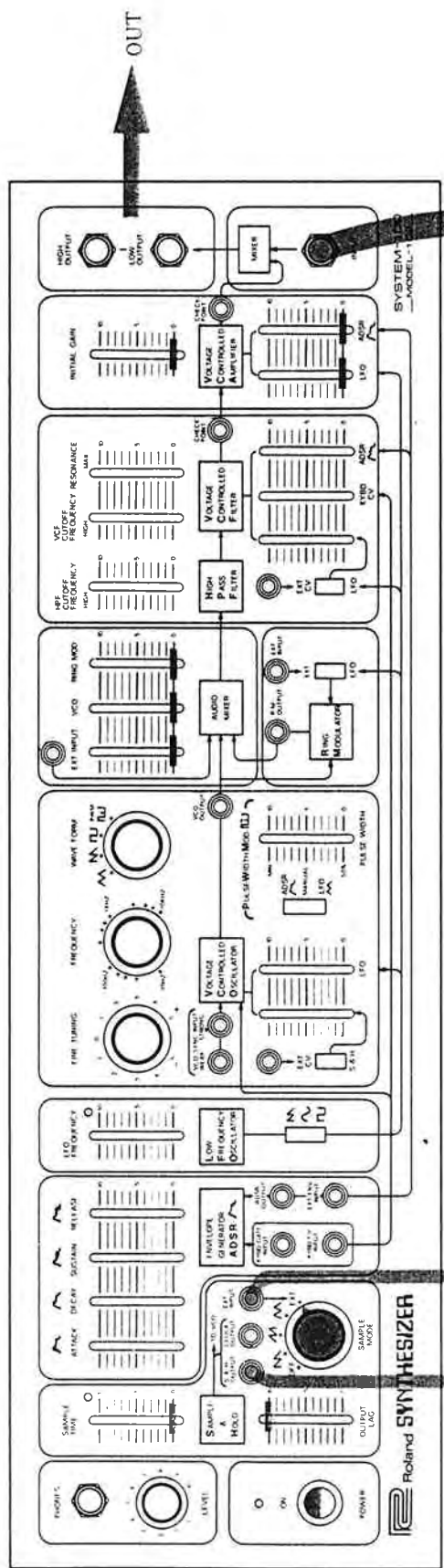
Set at 440Hz.
(440Hzにセット)



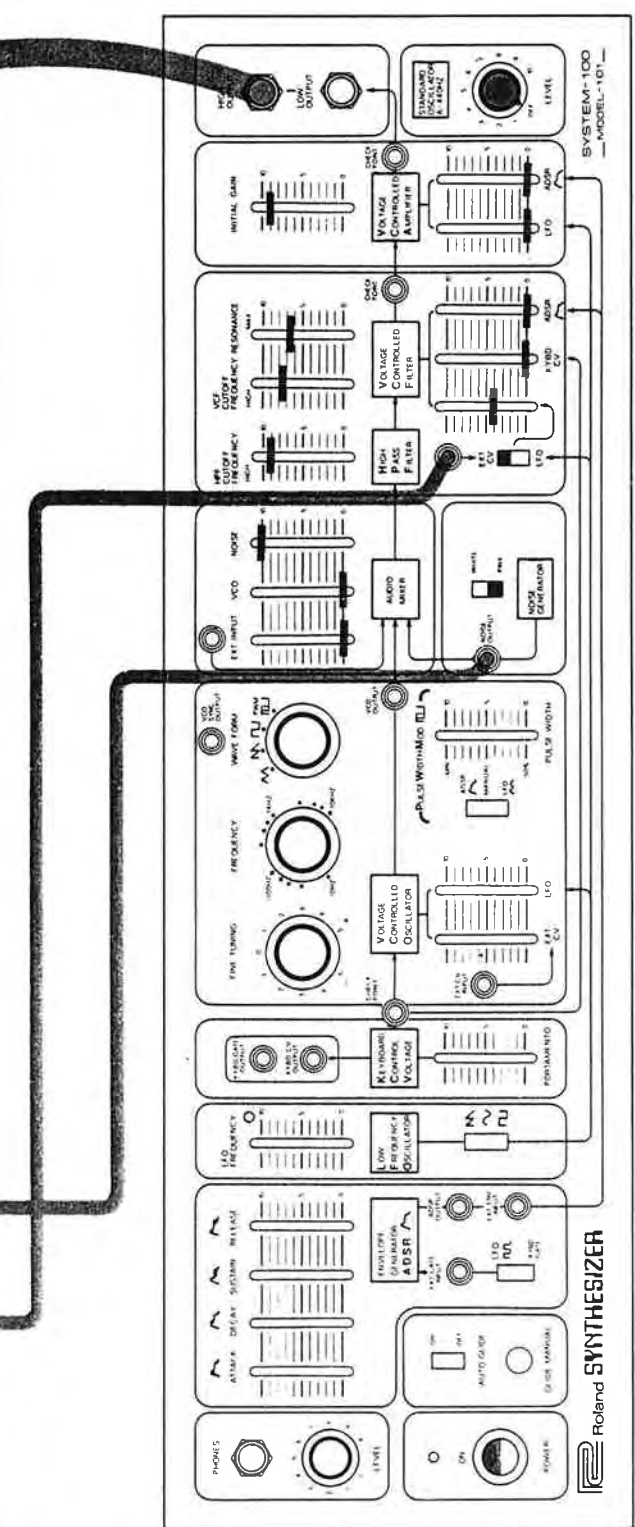
1 101

VCO-2:

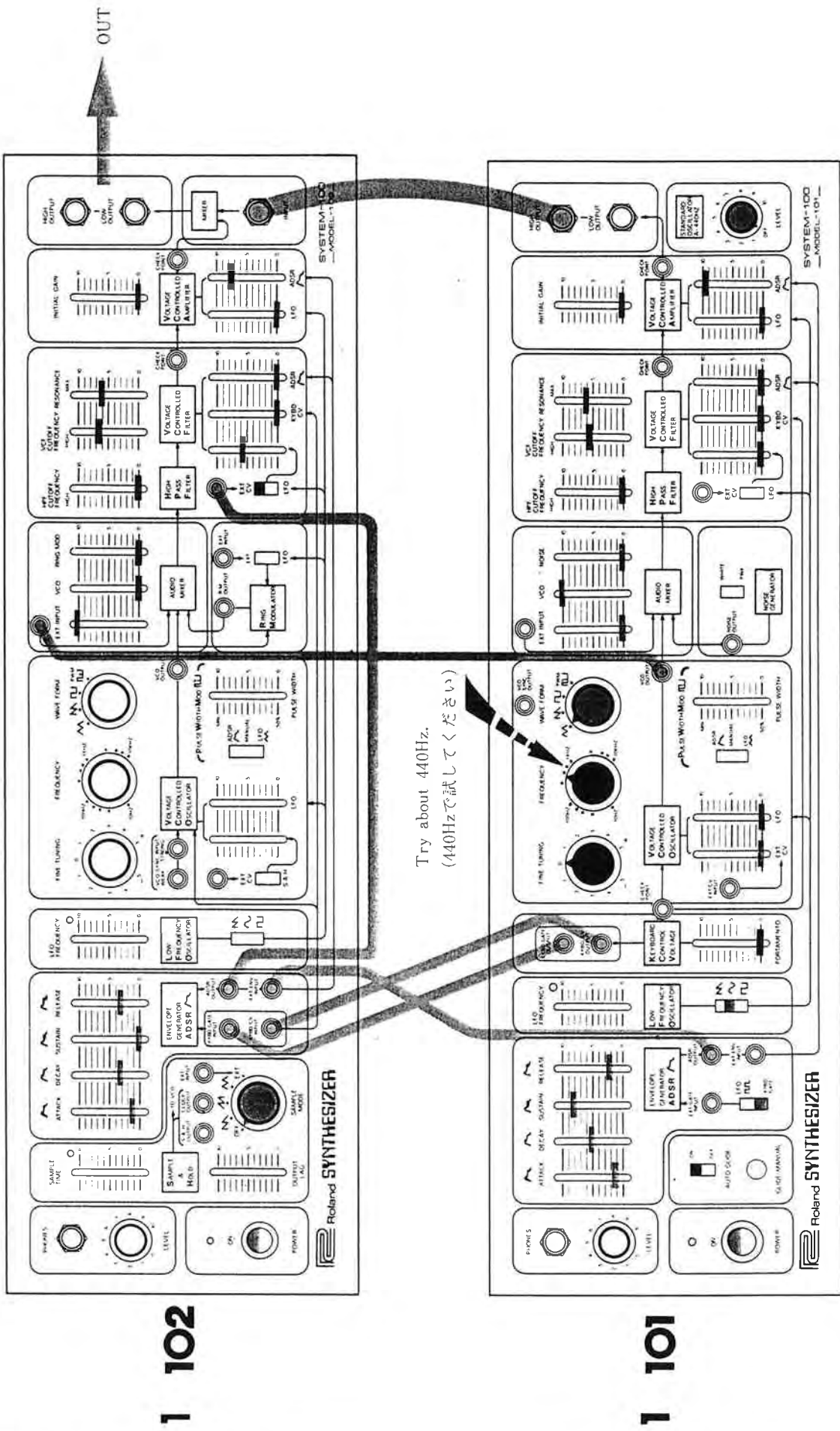




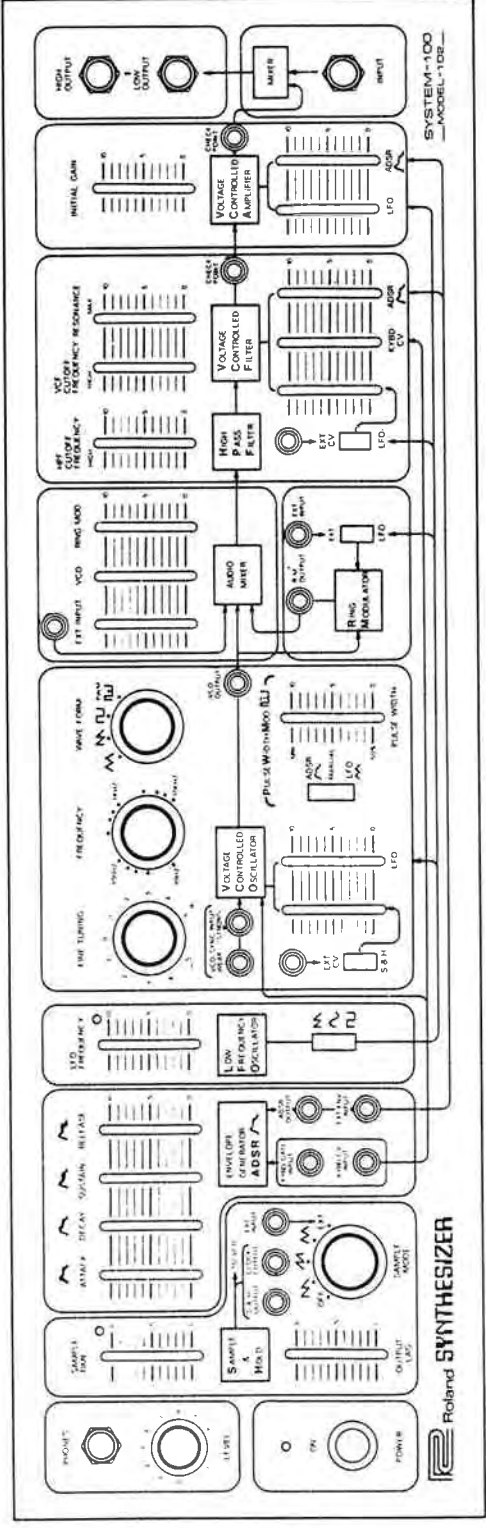
102



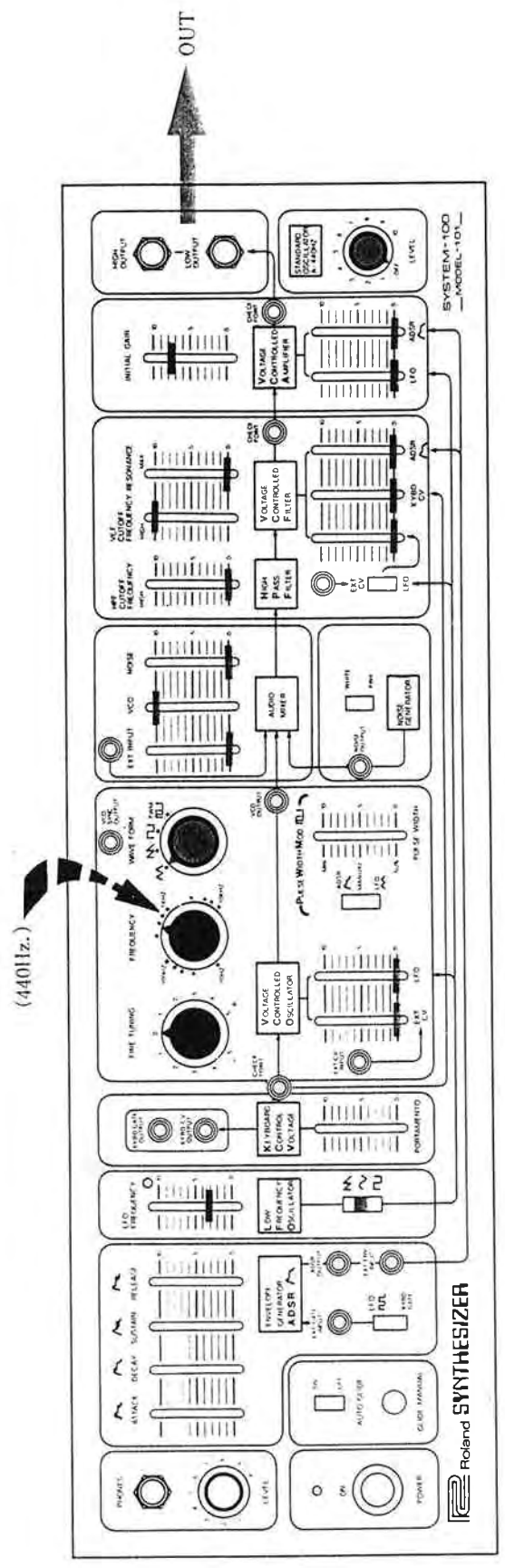
101



Pressing a key in the middle of the keyboard produces a "you"-like sound.
 (鍵盤中央部のキーを押します。)



102

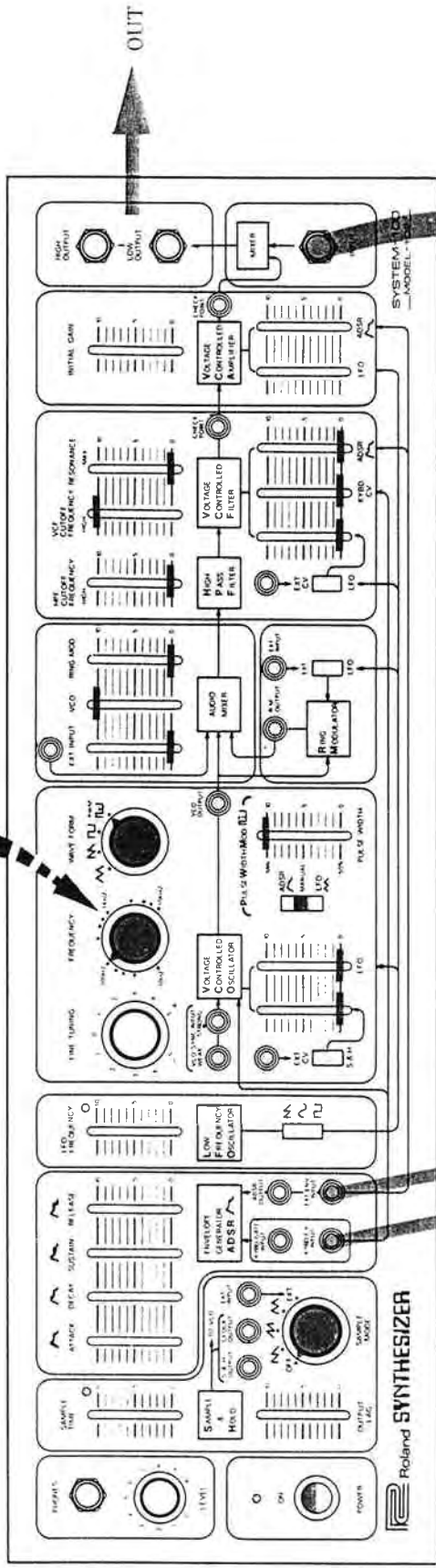


101

OUT



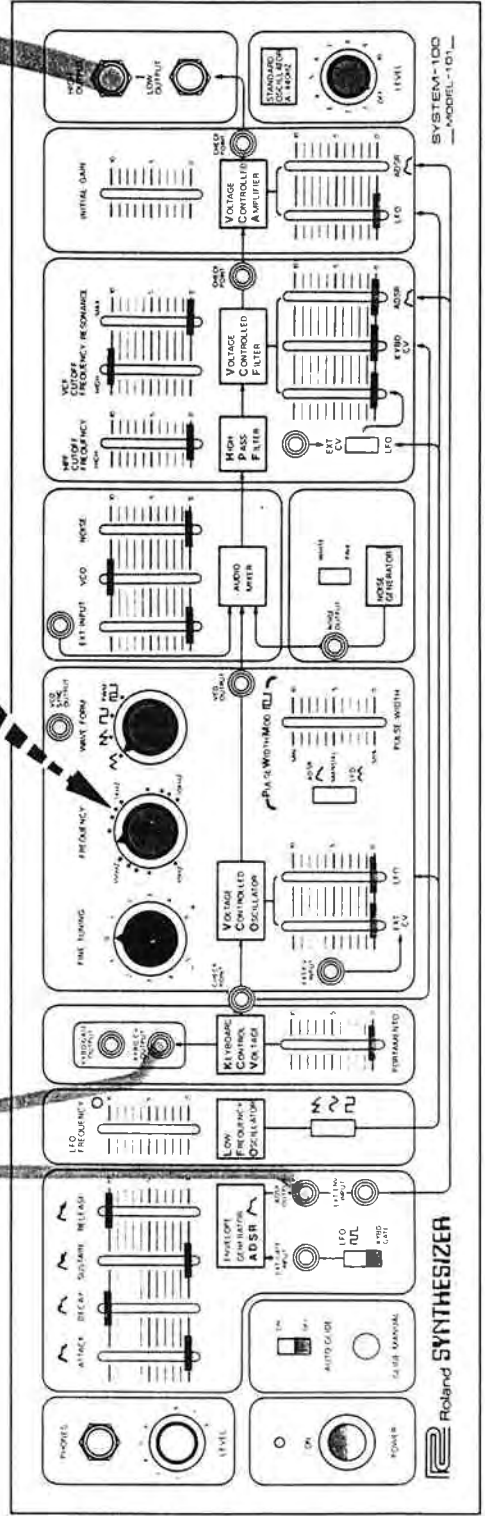
Set at about 100Hz.
(100Hzぐらいにセット)



1 102

Couples keyboard control
Voltage to 102 Unit
(102にキーボード・コントロール
電圧を送ります。)

Tune to one octave above VCO-2
(VCO-2の1オクターブ上:200Hzぐらいにセット)

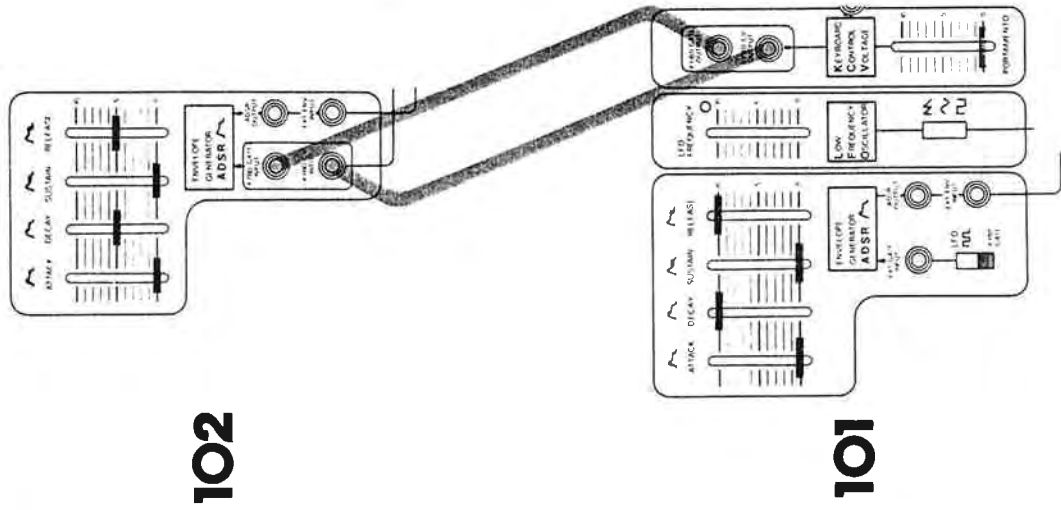


1 101

The lower ADSR controls both units.
(101のADSRが2つのユニットをコントロールします。)

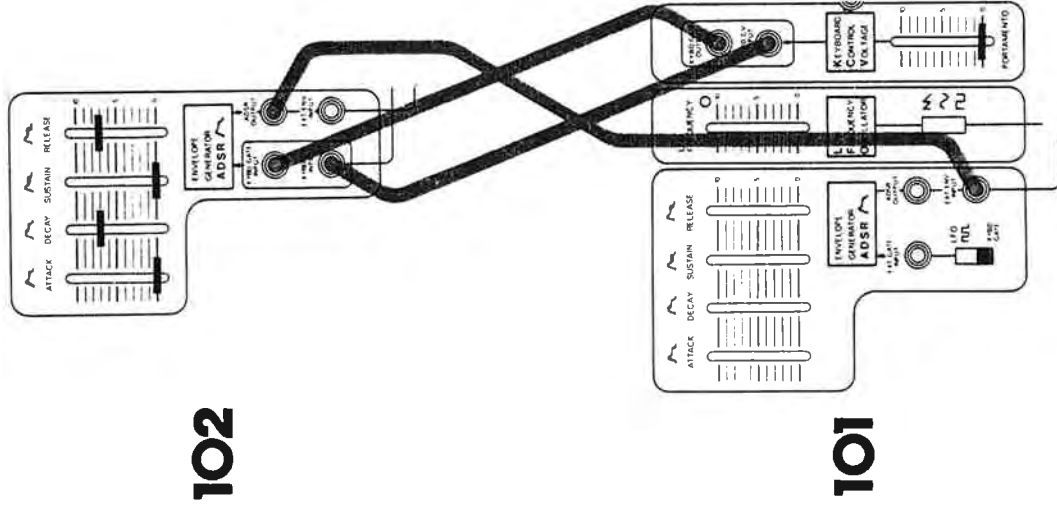
PATCH 25b

All other controls should be set as shown in Patch 25a.
(表以外のコントロールはパッチ25aと同じところにセットします。)



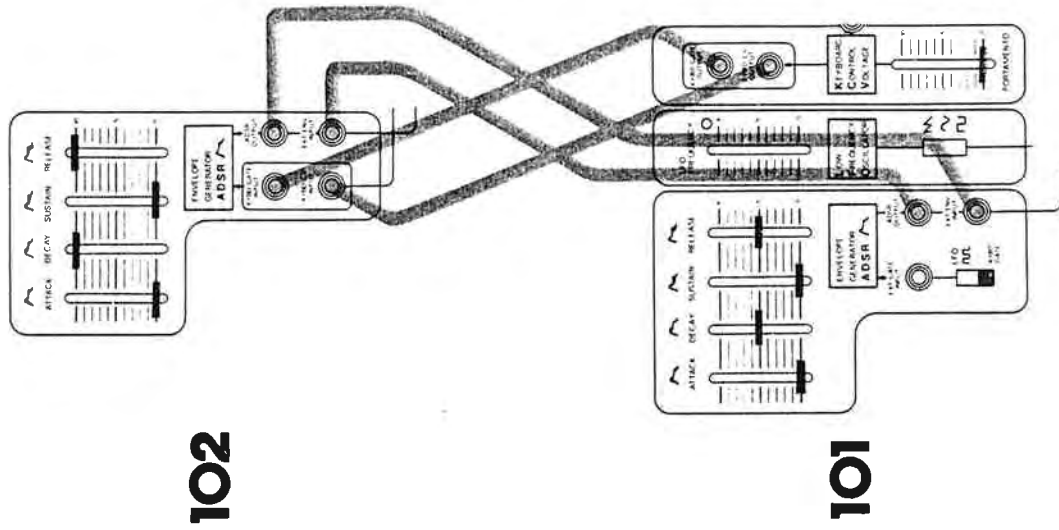
Each ADSR controls its own unit.
(各ADSRはそれぞれのユニットをコントロールします。)

PATCH 25c



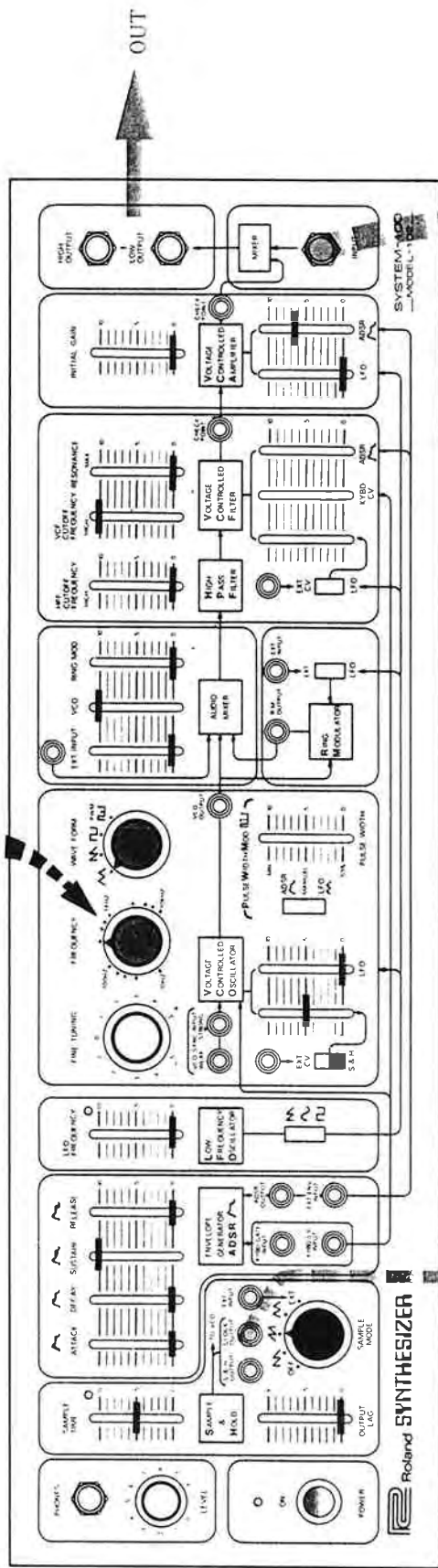
The upper ADSR controls both units.
(102のADSRが2つのユニットをコントロールします。)

PATCH 25d



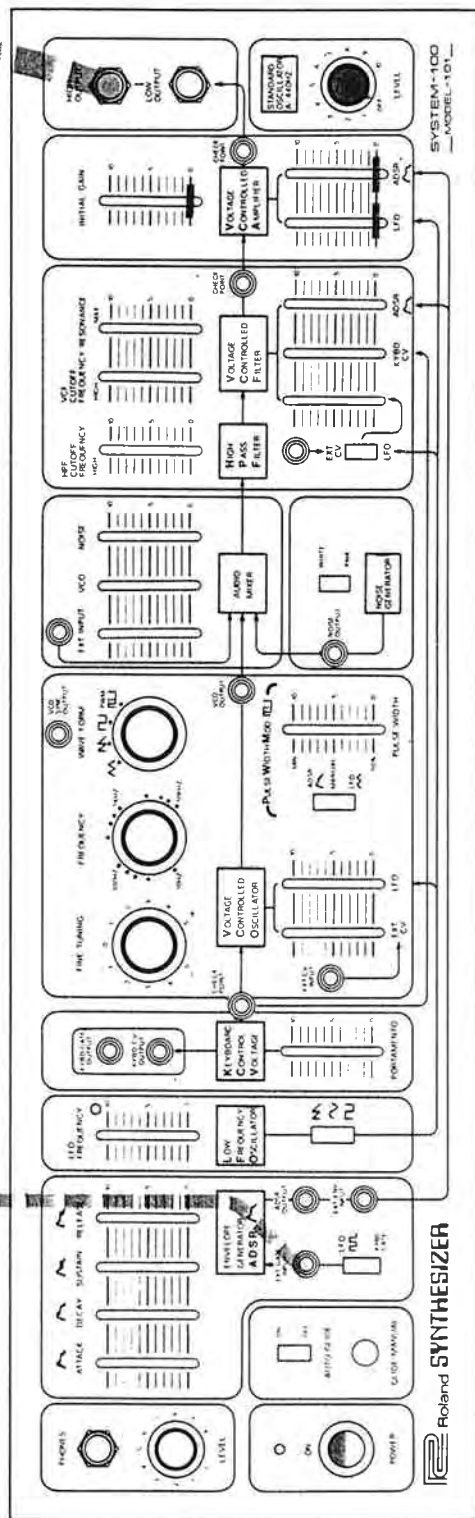
The upper ADSR controls the lower unit; The lower ADSR controls the upper unit.
(102のADSRが101を、101のADSRが102をコントロールします。)

Set at about 300Hz.
(300Hzぐらいにセット)

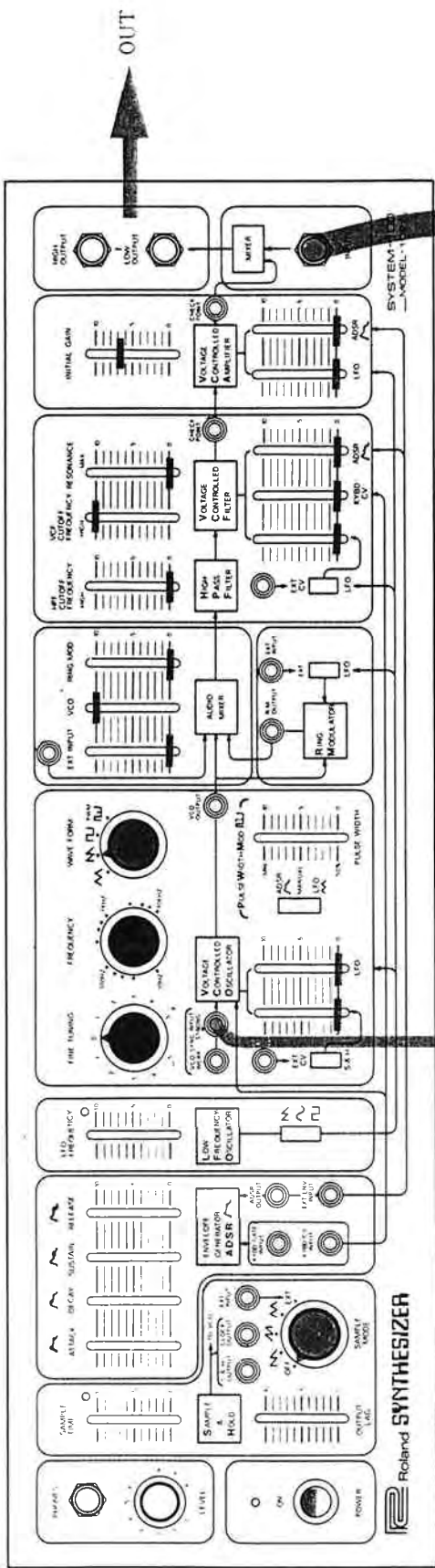


1 102

Use this when you want to trigger
both ADSR's with the S/H.
(ADSR-1をADSR-2と同時に作動させるには
この接続方法をとります。)



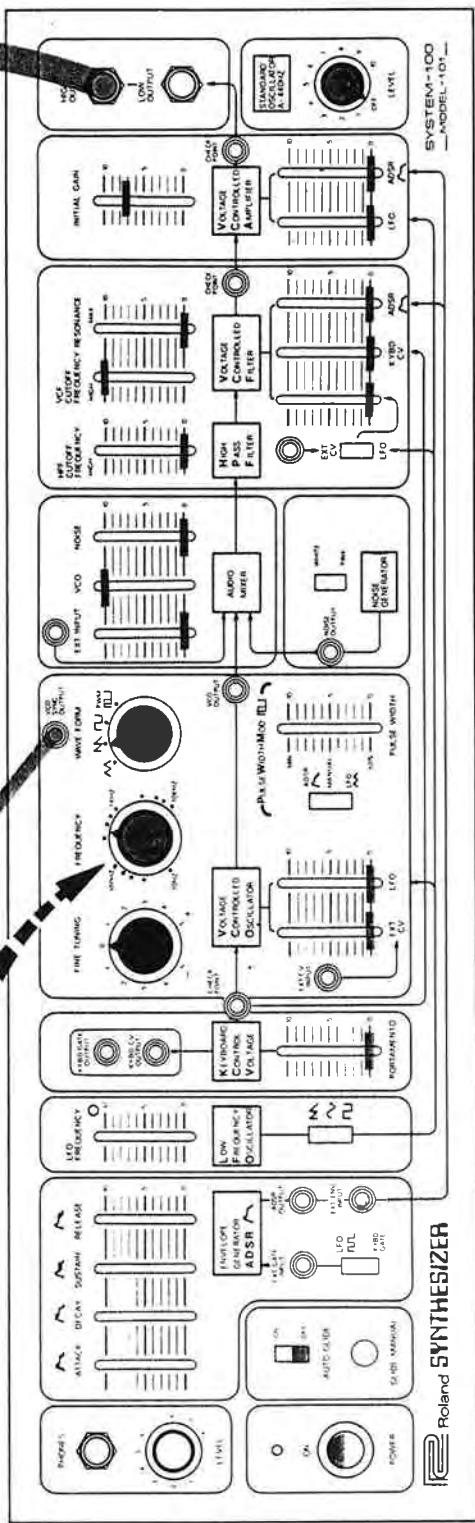
1 101



102

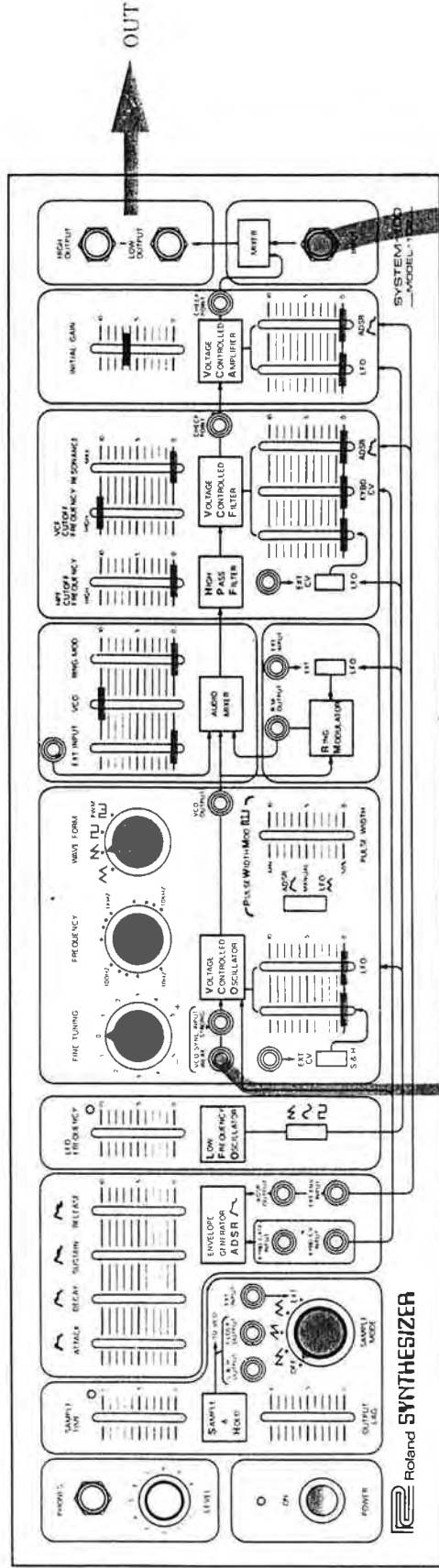
Sync Patch cord
 (シンクロ・パッチコード)

Set at 440Hz
 (440Hzにセツト)



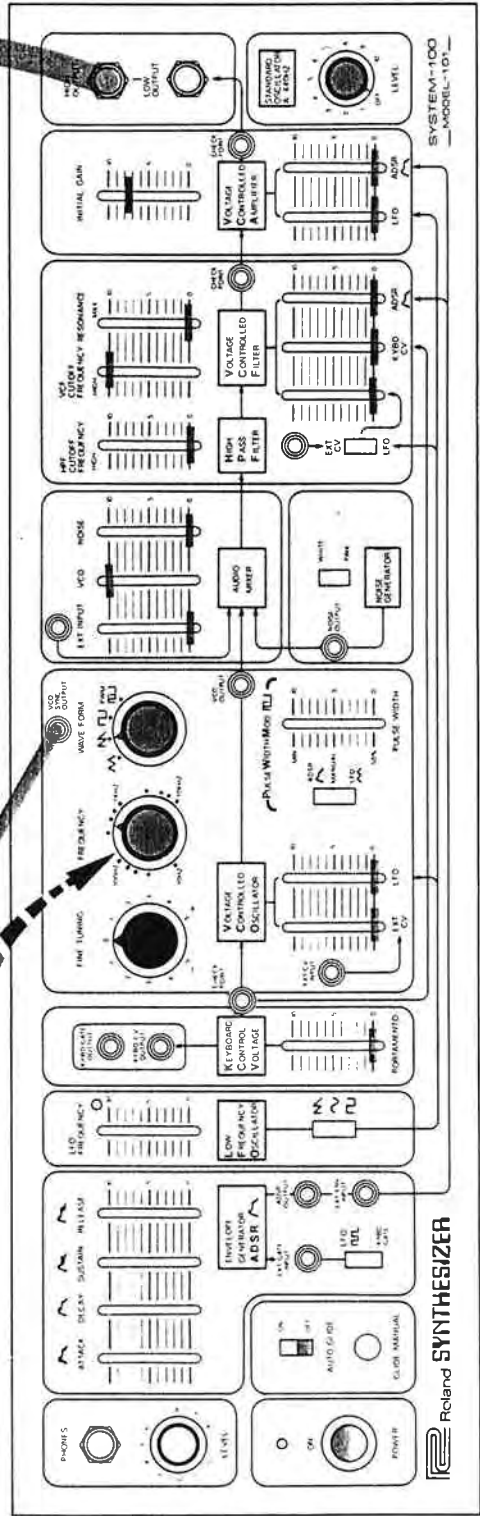
101

PATCH 28
100 Weak Sync Test
150-159 / 105-11



1 102

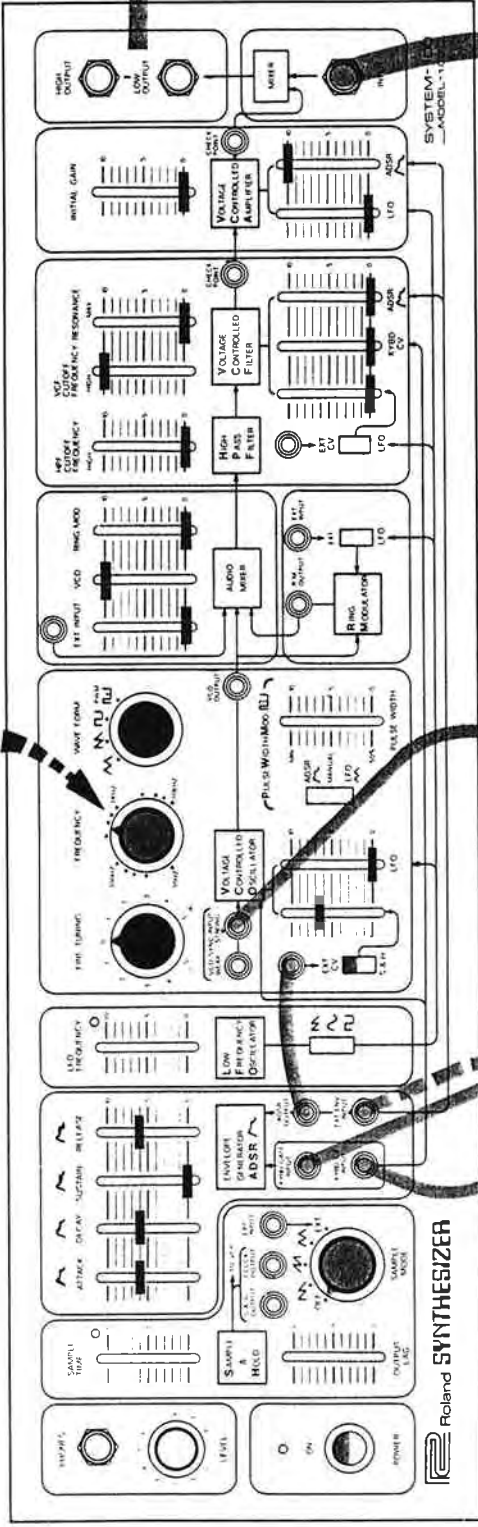
Set at 440Hz.
(440Hzにセット)



1 101

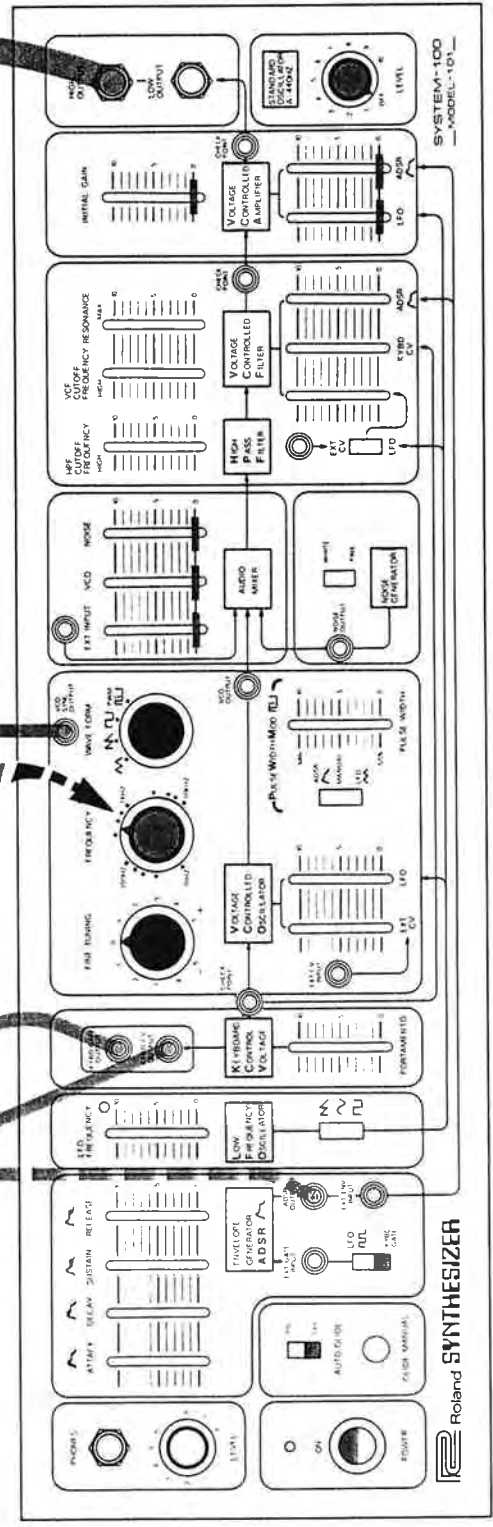
OUT

Tune to unison
(VCO-1と同じ440Hzにセット)



102

Set at 440Hz.
(440Hzにセット)



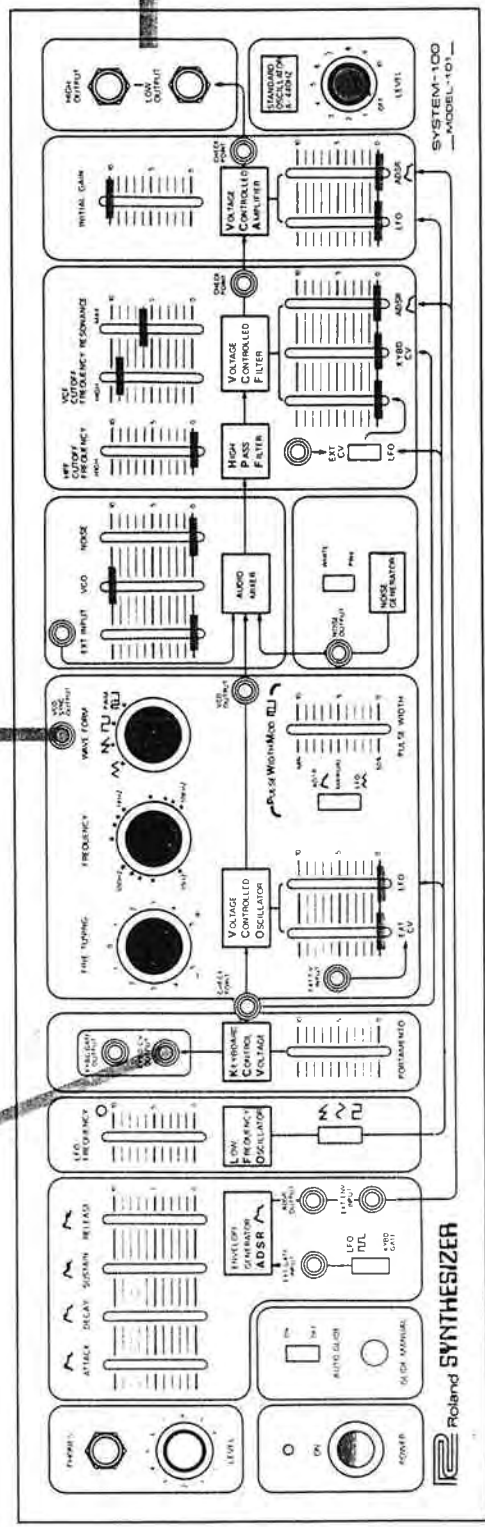
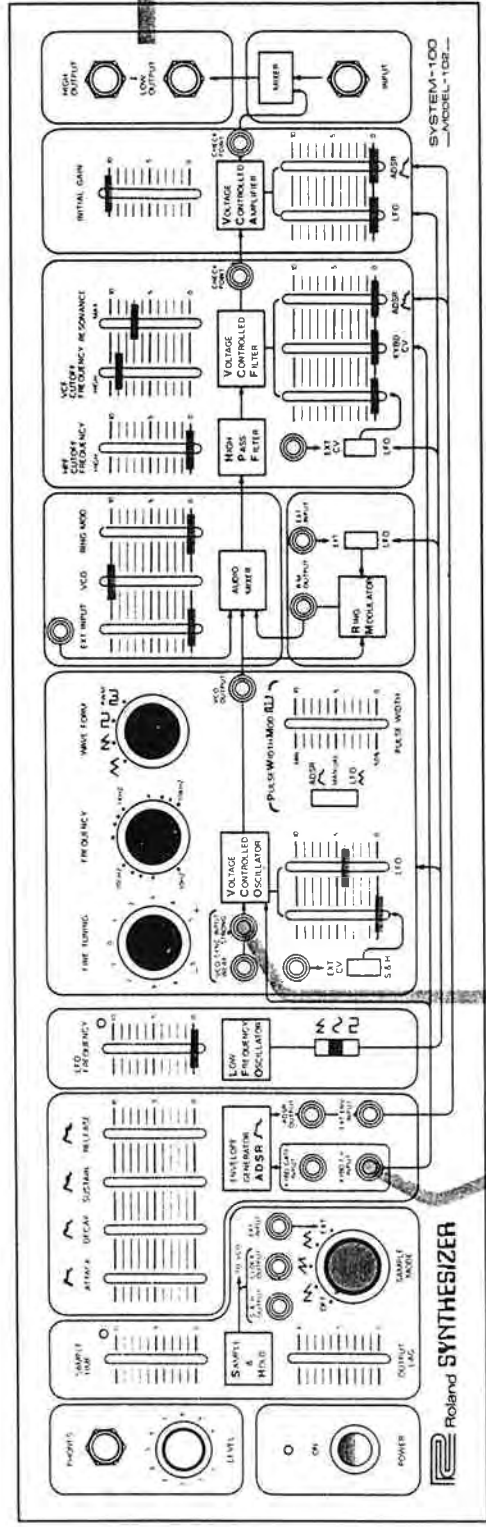
101

Strike a key and hold it until the action stops.
(音色効果が終るまでキーを押して続けてください。)

PATCH 30

VIDEO PATCH

(ビデオ用パッチ)



This patch produces interesting visual patterns on an oscilloscope. Experiment with the VCO controls. (オシロスコープの画面で面白い映像を映し出すことのできるパッチです。VCOをさまざまにコントロールしてみてください。)

THE LAST WORD.....

In your experimenting, if you find some wild sound you'd like to share with us, please send it along; we'd be very glad to receive it. Or, if you have any special problems in making patches, please let us know and we'll try to help you out.

Synthesizer Project Manager

Roland Corporation
3-2-26, Shinkitajima
Suminoe-ku
Osaka, JAPAN

Copyright © 1976 by ROLAND CORPORATION

All rights reserved. No part of this publication may be reproduced in any form without prior written permission from ROLAND CORPORATION

Copyright © 1976 by ROLAND CORPORATION
無断の複製・転載を禁じます。



Holland

1954-1955

THE UNIVERSITY OF CHICAGO
LIBRARY
540 EAST 57TH STREET
CHICAGO, ILL. 60637