

Owner's Manual

This manual explains how to use an MV-8000 in which "System Program Version 3.50 is installed.

About the symbols and icons in this manual

- **Text in square brackets [] refers to buttons on the panel of the MV-8000.**
Buttons indicated as [F1 (sample)] refer to the F1 (function 1) button when the F1 function shown in the LCD is "Sample."
- **Where a range of values is shown, the default value is printed in bold type.**

For example, an indication of
Range: **60**, 67, 72, 75 (Hz)
means that 60 Hz is the default value.



Indicates information that you should be aware of when using the MV-8000.



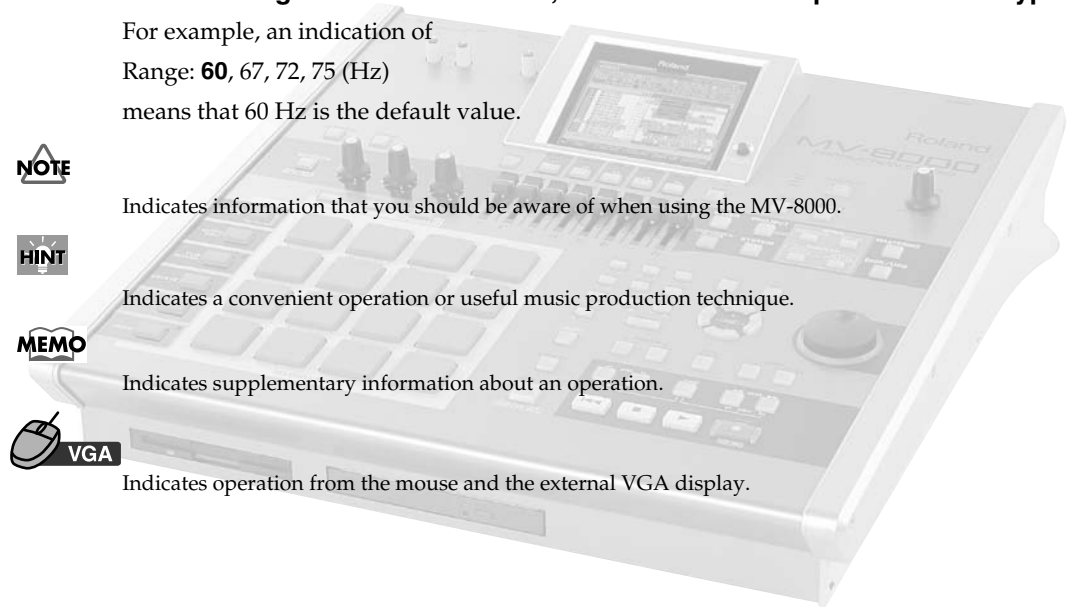
Indicates a convenient operation or useful music production technique.



Indicates supplementary information about an operation.



Indicates operation from the mouse and the external VGA display.



- Before using this unit, carefully read the sections entitled: "IMPORTANT SAFETY INSTRUCTIONS" (Owner's Manual p. 2), "USING THE UNIT SAFELY" (Owner's Manual p. 3), and "IMPORTANT NOTES" (Owner's manual p. 5). These sections provide important information concerning the proper operation of the unit. Additionally, in order to feel assured that you have gained a good grasp of every feature provided by your new unit, Quick Start and Owner's Manual should be read in its entirety. The manual should be saved and kept on hand as a convenient reference.
- The explanations in this manual include illustrations that depict what should typically be shown by the display. Note, however, that your unit may incorporate a newer, enhanced version of the system (e.g., includes newer sounds), so what you actually see in the display may not always match what appears in the manual.

©2005 Roland Corporation

All rights reserved. No part of this publication may be reproduced in any form without the written permission of ROLAND CORPORATION.

<http://www.roland.com/>

An overview of version 3.5

Added functionality

- **Mixer automation (p. 3)**
Operations on the MIXER screen can now be recorded and recalled.
- **Track mute automation (p. 5)**
Operations on the TRACK MUTE screen can now be recorded and recalled.
- **C-knob automation (p. 10)**
Operations of the C-knob can now be recorded and recalled.
- **Transmit Program Changes to an external sound module (p. 12)**
MIDI Program Changes can now be transmitted at the beginning of a Song or Pattern.
- **Pencil tool added (p. 13)**
You can now enter note events on the VGA PIANO ROLL EDIT screen.
- **Continuous data generation and modification capability (p. 14)**
You can now enter and edit data that has continuous values. This can be used to enter automation data into MIDI tracks.
- **Three-band equalizer added (p. 16)**
You can now use the equalizer to adjust the tone.
- **Import Patch Preview function added (p. 18)**
You can now preview and audition before importing Patches.

Screens that have been added

- **MUTE CONTROL TRACK screen (p. 8)**
- **TRACK SELECT popup (p. 9)**
- **CREATE CONTINUOUS DATA popup (p. 14)**
- **CHANGE CONTINUOUS DATA popup (p. 15)**
- **MIXER (AUDIO TRACK EQ), MIXER (INSTRUMENTS PART 1-8 EQ), MIXER (INSTRUMENTS PART 9-16 EQ) screen (p. 16)**

Automating mixing operations (Automation)

Automating operations of Mixer Channel

The operations of the mixer parameter on the MIXER screens can be recorded on the sequencer (MIDI track).

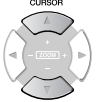
Mixer parameters that can be recorded and played back

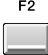
Mixer operation data is recorded on a MIDI track as MIDI Control Change data. The following table shows the data that can be recorded and played back, and the MIDI Control Change numbers used for each type of data.

Parameters	MIDI Control Change Number
Level	7 (Volume)
Pan	10 (Pan)
Reverb Send	91 (Reverb: Effect 1 Depth)
DlyCho Send	93 (Chorus: Effect 3 Depth)

Recording mixer operations for a Mixer Channel

1. Access the SEQUENCE screen or the PATTERN screen.
2. Move the current time to the location at which you want to start recording mixer operations.

3. Use  to select the MIDI track on which you want to record the Mixer Channel operations (movements).

4. Press  (Track Param).

The TRACK PARAMETER popup will appear.



MEMO

You can't record mixer operations for multiple Mixer Channels at the same time.

MEMO

You can't record operations of the Output parameter, Mute parameter, and EQ parameters on the MIXER screens.

MEMO

You can use the SEQUENCE EDIT screen, the PATTERN EDIT screen, or the EVENT LIST screen to edit a MIDI track on which you recorded mixer operations.

Automating mixing operations (Automation)

- Use the Output Assign parameter to select the Mixer Channel for which you want to record/playback mixer operations.

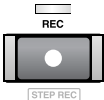
The following table shows the Mixer Channel that can be recorded and played back.

Mixer Channel	Value
AUX1	Mixer AUX1
AUX2	Mixer AUX2
AUX3	Mixer AUX3
AUX4	Mixer AUX4
Delay/Chorus	Mixer DlyCho
Reverb	Mixer Reverb
Audio Phrase	Mixer A.Phrs
Input	Mixer Input
Audio track 1-8	AMix *: (Audio track name) "*" shows Track Number.

Select the "AMix" for which you want to record mixer operation of Audio track.



- Press  and select the MIXER screen for which you want to record the Mixer Channel.

- Press  .

[REC] (red) indicator will blink, and the RECORDING PARAMETER (MIDI) popup will appear. Make recording settings as necessary.

- Press  .

[REC] (red) and [PLAY] (green) will light, and the RECORDING PARAMETER (MIDI) popup will close. Use the sliders or VALUE dial to adjust the mixer parameter values for the Mixer Channel you selected in step 5. The value changes will be recorded on the MIDI track.

- Press  to stop recording.

[REC] and [PLAY] will go dark, and recording will stop.

MEMO

When you delete an Audio track, the Output Assign parameter will be switched Off for the MIDI track on which you recorded the mixer automation operations for that track.

Playback mixer movements

- Move the current time to the location at which the mixer operations were recorded.

- Press  .

[PLAY] (green) will light. The Mixer parameters will change according to the data recorded on the MIDI track.

- Press  to stop playback.

[PLAY] will go dark, and playback will stop.



HINT

By changing the Output Assign parameter setting for the MIDI track on which you recorded the mixer operations to other Mixer Channel, you can playback those same mixer operations on a different Mixer Channel.

Automating mute operations for each track

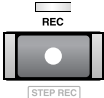
Mute settings for each track can be recorded on the Mute Control Track and played-back.

Recording mute operations

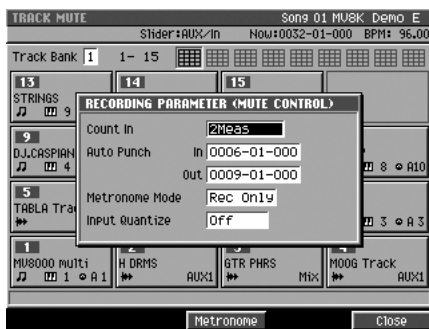
1. Hold down , and press .

The TRACK MUTE screen will appear.

2. Move the current time to the location at which you want to start recording mute operations.

3. Press .

[REC] (red) indicator will blink, and the RECORDING PARAMETER (MUTE CONTROL) popup will appear. Make recording settings as necessary.



- **Count In**

Specifies how recording will begin.

Value	Explanation
Off	Recording will begin the moment you press [PLAY].
1 Meas	When you press [PLAY], a count-in will sound from one measure earlier than the record-start location, and recording will begin at the record-start location.
2 Meas	When you press [PLAY], a count-in will sound from two measures earlier than the record-start location, and recording will begin at the record-start location.
Wait Note	Recording will begin the moment you press [PLAY].

- **Auto Punch**

Recording will begin (punch-in) and end (punch-out) automatically at the time locations you specify beforehand.

Parameter	Value
In	0001-01-000 – 9999-**-***
Out	0001-01-000 – 9999-**-***

- **Metronome Mode**

Specifies when the metronome signal will be output.

Value	Explanation
Off	The metronome will not sound.
Rec Only	The metronome will sound only during recording.
Play&Rec	The metronome will sound during playback and recording.
Always	The metronome will always sound.

Automating mixing operations (Automation)

- **Input Quantize**

You can record into the sequencer while applying quantization.

Value: Off, ♩ (60), ♪₃ (80), ♪ (120), ♪₃ (160), ♪ (240), ♪₃ (320), ♪ (480)



[REC] (red) and [PLAY] (green) will light, and the RECORDING PARAMETER (MUTE CONTROL) popup will close. Strike the velocity pads to perform track mute operations. Mute operations will be recorded on the Mute Control Track.



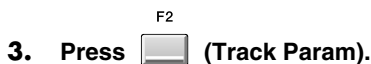
[REC] and [PLAY] will go dark, and recording will stop.



Recording will end automatically if you access any screen other than the TRACK MUTE screen (for example by pressing [EXIT]) while recording.

Playback mute operations

1. Access the SEQUENCE screen or the PATTERN screen.



The TRACK PARAMETER popup will appear.



4. Use the Mute Control parameter to specify whether mute operations are to be played-back or not.

- **Mute Control**



Tracks will be muted/unmuted according to the track mute data recorded on the Mute Control Track.

Value	Explanation
Off	The recorded mute data will be disabled. Mute operations will not be played back.
On	The recorded mute data will be enabled.
On (Default=Off)	The recorded mute data will be enabled. With this setting, mute will automatically be disabled when you move the time location to the beginning of the track.
On (Default=On)	The recorded mute data will be enabled. With this setting, mute will automatically be applied when you move the time location to the beginning of the track.



The TRACK PARAMETER popup will close. If you want to enable/disable mute

operations for other tracks, repeat steps 2–5.

6. Hold down , and press .

7. Press .

8. Use  to select “Track Mute Setup” and press  (Select).

The TRACK MUTE SETUP popup will appear.



9. Set the Mute Control Track parameter to On.

10. Press .

The TRACK MUTE SETUP popup will close.

11. Move the current time to the location at which the mute operations were recorded.

12. Press .

[PLAY] (green) will light. The mute settings of each track will change according to the mute data recorded on the Mute Control Track.

13. Press  to stop playback.

[PLAY] will go dark, and playback will stop.

MEMO

The on/off status of the Mute Control Track parameter can be set for each Song and each Pattern.

MEMO



The on/off status of the Mute Control Track parameter for a Song can also be set from the SONG PARAMETER screen.

MEMO

The on/off status of the Mute Control Track parameter for a Pattern can also be set from the PATTERN PARAMETER screen.

Editing the recorded mute data

In the MUTE CONTROL TRACK screen, you can edit the mute data that is recorded on the Mute Control Track. You can adjust the timing (measure-beat-tick) of the recorded mute data, or change the mute on/off status.

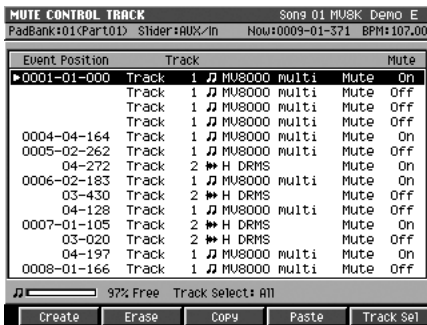
1. Hold down , and press .






The TRACK MUTE screen will appear.


2. Press .

3. Use  to select "Mute Control Track" and press  (Select).

The MUTE CONTROL TRACK screen will appear.



F button	Explanation.
 (Create)	Adds a new Mute data to the current location.
 (Erase)	Erases the Mute data at the cursor location. The erased data will be held in the temporary memory.
 (Copy)	Copies the Mute data at the cursor location into the temporary memory.
 (Paste)	The PASTE EVENT popup will appear. Adds the Mute data held in the temporary memory to the specified time.
 (Track Sel)	The TRACK SELECT screen (p. 9) will appear.

4. Use  or VALUE dial to select the mute data which you want to edit.

5. Use  to select the parameter which you want to change.

6. Use VALUE dial or  /  to change the value.

HINT



You can access the MUTE CONTROL TRACK screen from the SEQUENCE (or PATTERN) screen. To access this screen, press [MENU], select "Mute Control Track", then press [F5 (Select)].

HINT

To specify the value of a parameter, you can use the VALUE dial or [DEC]/[INC], or use the numeric keys to input the value directly. After using the numeric keys to input a value, press [ENTER] to finalize the input.

Viewing the mute data of only a specific track

You can limit the mute data shown on the MUTE CONTROL TRACK screen so that you see only the single track you're interested in.

1. Hold down , and press .

The TRACK MUTE screen will appear.

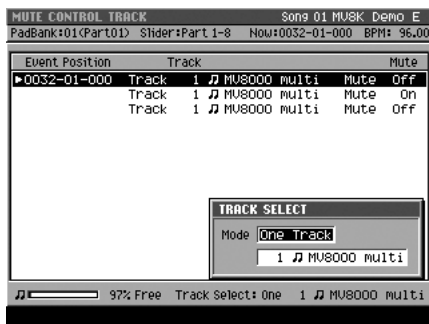
2. Press .

3. Use  to select "Mute Control Track" and press  (Select).

The MUTE CONTROL TRACK screen will appear.

4. Press  (Track Sel).

The TRACK SELECT popup will appear.



5. Specify the track number you want to view.

- **Mode**

Value	Explanation
All	The mute data of the all tracks will be shown.
One Track	Mute data of the single track you specify will be shown. Use the parameter below to select the track you want to view.

6. Press .

The TRACK SELECT popup will close.


Automating operations for each C (Control) knob

The operations of the C1–C3 knobs assigned to MFX (multi-effects) parameters can be recorded on a MIDI track.

Recording C (Control) knob operations

1. Assign the C (Control) knobs to the effect parameters you want to control, as described in “KNOB ASSIGN popup” in the MV-8000 owner’s manual.
2. Access the SEQUENCE screen or the PATTERN screen.

3. Use  to select the MIDI track on which you want to record the C knob operations (movements).

4. Press  (Track Param).

The TRACK PARAMETER popup will appear.



5. Set the Output Assign parameter to MFX.



6. Move the current time to the location at which you want to start recording the C knob operations.

7. Press  .

[REC] (red) indicator will blink, and The RECORDING PARAMETER (MIDI) popup will appear. Make recording settings as necessary.

8. Press  .

[REC] (red) and [PLAY] (green) will light, and the RECORDING PARAMETER (MIDI) popup will close. Use the C1–C3 knob to change effect parameters. Operations of the C1–C3 knobs will be recorded.

9. Press  to stop recording.

[REC] and [PLAY] will go dark, and recording will stop.

Playback C (Control) knob operations to control effect parameters

1. Move the current time to the location at which the C knob operations were recorded.

2. Press  .

[PLAY] (green) will light. The C1–C3 knob operation data recorded on the MIDI track will control the effect parameters.

3. Press  to stop playback.

[PLAY] will go dark, and playback will stop.

About the data recorded on the MIDI track

Data for the C-knob operations is recorded on the current MIDI track as MIDI Control Changes. The following table shows the recorded C-knob data and the MIDI Control Change numbers that are used.

Knob	MIDI Control Change Number
C1	16 (General 1)
C2	17 (General 2)
C3	18 (General 3)

MEMO

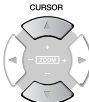
Automation only playback the operations of the C1–C3 knobs. It does not directly record the values of the effect parameters themselves. This means that if different effect parameters are assigned to the C1–C3 knobs when you play back the automation, the played back result will be different.


Added Functionality in Sequencer

Transmitting MIDI Program Changes at the beginning of a Pattern or Song

You can transmit MIDI Program Change at the time you start playback Song or Pattern from the beginning (0001-01-000). You can select the correct Patches (sounds) of external MIDI sound module at the beginning of playback when you are using an external MIDI sound modules.

1. **Select the Song (or Pattern) which you want to transmit MIDI Program Changes at the beginning, and access the SEQUENCE (or the PATTERN) screen.**

2. Use  to select the MIDI track on which you want to transmit the MIDI Program Change.

3. Press  (Track Param).

The TRACK PARAMETER popup will appear.



4. **Specify the parameters.**

Parameter	Value	Explanation
Prog	Off, 1-128	The Program Change Number you want to transmit.
BankH	---, 0-127	Value of the Bank Select MSB (CC #0).
(Bank) L	---, 0-127	Value of the Bank Select LSB (CC #32).

5. Press .

The TRACK PARAMETER popup will close.

6. Press .

The current time will return to the beginning of the Song (or Pattern).

7. Press .

[PLAY] (green) will light. The MIDI Program Change message and Bank Select message will be transmitted, playback will begin.

8. Press  to stop playback.

[PLAY] will go dark, and playback will stop.

MEMO

Program Change message will not be transmitted if the Prog parameter is turned Off.

MEMO

Bank Select messages will not be transmitted if Bank H or L is set to ---.



Using the Pencil tool to enter note events on the VGA PIANO ROLL EDIT screen

When you click the Pencil button, the mouse pointer will change shape (). You can use the Pencil tool to enter note events.

1. Click the Pencil button.

You can enter the note event by clicking the mouse.



2. Use the Step Time parameter to select the length (note value) of the note events you want to enter.

3. Use the Duration and Velocity parameters to specify the duration (the time that the note will actually sound, relative to the Step Time) and velocity (the strength of the note) of the note event.

4. Click the position that corresponds to the pitch you want to enter.

A note event of the specified length will be entered where you click.

5. Press .

The VGA PIANO ROLL EDIT screen will close.

HINT

Click this bar, you can move the displayed portion of the range of sound (note number).

HINT

Click , expand (+) or shrink (-) the time axis of the display area (zoom).

The direction will narrow (zoom-in) the displayed area. It's convenient to zoom-in on a specific area if you've input numerous closely-spaced notes.

The direction will wide (zoom-out) the displayed area. Zoom out to view more data.

HINT

The value of each parameter will maintain the setting that was entered most recently. If the next note you want to enter is to have the same values, you can simply leave these parameters unchanged. In other words, once you have specified the Duration parameter or Velocity parameter, you can often leave them unchanged while you enter the rest of the notes; simply click the mouse successively on the pitches at which you want to enter notes.

Note length (Step time) and the number of ticks

The MV-8000's sequencer divides each quarter note into 480 "ticks." The following table shows the number of ticks in each note value.

Note	Number of ticks	Note	Number of ticks
(64th note)	30	(quarter note)	480
(32nd note triplet)	40	(half-note triplet)	640
(32nd note)	60	(half note)	960
(16th note triplet)	80	(whole note)	1920
(16th note)	120	(double whole note)	3840
(8th note triplet)	160	Phrase	The length of an Audio Phrase.
(8th note)	240	Pattern	The length of a Pattern.
(quarter note triplet)	320		

MEMO

The length that a recorded note will actually continue sounding will be the number of ticks in the note value multiplied by the Duration parameter. For example if the Duration parameter is "80%", a quarter note will actually sound for a length of 480 x 0.80 = 384 ticks.

MEMO

You can choose Phrase for the Step Time parameter only if you're on the STEP REC (AUDIO) screen. You can choose Pattern for the Step Time parameter only if you're on the STEP REC (PATTERN) screen.

MEMO

The parameter located at the right of the Step Time parameter lets you specify a dotted note.

Dot	The specified the proportion of the note
none	1 time (The length is same as the Step Time).
one (.)	1.5 times (a dotted note).
two (..)	1.75 times (a double dotted note)

Entering data with a smooth succession of values (Create Continuous Data)

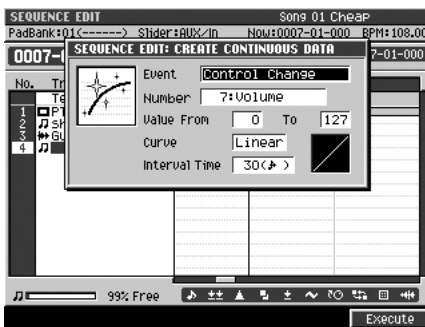
You can enter automation data (p. 3) containing values that change continuously over time, such as Volume data or Pan data.

- As described in steps 1–6 of “Using the SEQUENCE EDIT screen to edit” in the MV-8000 owner’s manual, select the region for which you want to enter data.

- Press  (Command), select “Create Continuous Data...” and press

 (Select).

The CREATE CONTINUOUS DATA popup will appear.



- Specify the parameters.

- Event**

Specify the type of data that you want to enter.

Value: **Control Change**, Channel Aftertouch, Poly Aftertouch, Pitch Bend

- Number**

If you specified Control Change as the Event, you can also specify the Control Change number that you want to enter.

Value: 0:BankSel MSB - **7:Volume** - 119:

- Note**

If you specified Poly Aftertouch as the Event, you can also specify the Note number that you want to enter.

Value: 0 (C -) - **60 (C 4)** - 127 (G 9)

- Value From**

Specify the initial value at the starting point of the continuous data.

Value (Control Change, Channel Aftertouch, Poly Aftertouch): **0** - 127

Value (Pitch Bend): -8192 - **0** - 8191

- To**

Specify the destination value at the ending point of the continuous data.

Value (Control Change, Channel Aftertouch, Poly Aftertouch): 0 - **127**

Value (Pitch Bend): -8192 - **0** - 8191

- Curve**

Specifies the kind of the change in data.

Value: -3, -2, -1, **Linear**, +1, +2, +3

- Interval Time**

Specify the spacing (in ticks) between events of the continuous data.

Value: 1 - **30** - 999

- Press  (Execute).

The continuous data will be created on the MIDI track.

MEMO

The Number parameter is shown only if you choose Control Change as the Event parameter.

The Note Parameter is shown only if you choose Poly Aftertouch as the Event parameter.

Modifying data in a selected region (Change Continuous Data)

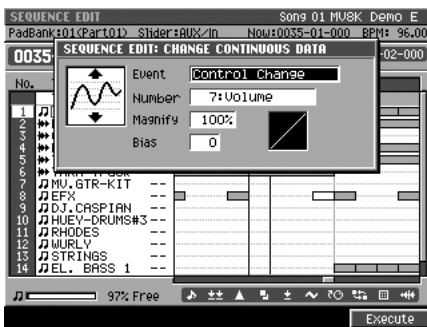
You can modify data such as volume and pan changes for automation in a selected region.

- As described in steps 1–6 of “Using the SEQUENCE EDIT screen to edit” in the MV-8000 owner’s manual, select the region for which you want to edit data.

- Press  (Command), select “Change Continuous Data...” and press

-  (Select).

The CHANGE CONTINUOUS DATA popup will appear.



- Specify the parameters.

- Event**

Specify the type of data that you want to edit.

Value: Control Change, Channel Aftertouch, Poly Aftertouch, Pitch Bend

- Number**

If you specified Control Change as the Event, you can also specify the Control Change number that you want to edit.

Value: 0:BankSel MSB - **7:Volume** - 119:

- Note Range**

If you specified Poly Aftertouch as the Event, you can also specify the range of Note number that you want to edit.

Value (Lower limit): **0 (C -)** - 127 (G 9)

Value (Upper limit): 0 (C -) - **127 (G 9)**

- Magnify**

Use this to increase or decrease the upper limit or lower limit of the selected values. With a setting of 100%, no change will occur. Use a setting of 101% or above to make the changes greater, and a setting of 99% or below to make the changes smaller. For example, a setting of 50% would halve the values and a setting of 200% would double the values. Negative “-” settings will invert the upper and lower limit values.

Value: -200% - **100%** - 200%

- Bias**

This parameter specifies the amount by which the data will be increased or decreased.

Value (Control Change, Channel Aftertouch, Poly Aftertouch): -99 - **0** - 99

Value (Pitch Bend): -999 - **0** - 999

- Press  (Execute).

The data you selected will be modified.

MEMO

The Number parameter is shown only if you choose Control Change as the Event parameter.
The Note Range Parameter is shown only if you choose Poly Aftertouch as the Event parameter.

Added Functionality in Mixer

Adjusting the tone of an Instruments or Audio track

Each Part of Instruments and the mixer section of each Audio track has a 3-band EQ (equalizer).




You can use this equalizer to adjust the tone.

MIXER

1. Press .

The MIXER screen will appear.

2. Press the function buttons to switch the mixer you want to adjust tones by equalizer.


F button	Screen displayed
F1  (Audio track)	MIXER (AUDIO TRACK) screen
F2  (Part 1-8)	MIXER (INSTRUMENTS PART 1-8) screen
F3  (Part 9-16)	MIXER (INSTRUMENTS PART 9-16) screen

3. Press  (→EQ).

The screen will show the EQ screen for the mixer you selected in step 2.



Mixer selected	Screen displayed
Audio track	MIXER (AUDIO TRACK EQ) screen
Part 1-8	MIXER (INSTRUMENTS PART 1-8 EQ) screen
Part 9-16	MIXER (INSTRUMENTS PART 9-16 EQ) screen

4. Use  to move the cursor to the equalizer parameters on which you want to adjust.

HINT

While the EQ screen is displayed, repeatedly pressing the [MIXER] button will cycle through the screens in the following order:

MIXER (AUDIO TRACK)

↓

MIXER (INSTRUMENTS PART 1-8)

↓

MIXER (INSTRUMENTS PART 9-16)

↓

MIXER (AUDIO TRACK)



MEMO

The MIXER screen accessed by pressing [F4 (AUX/Phrs/In)] does not have an equalizer function.

MEMO

Pressing [F5 (→EQ)] will display the EQ screen, and pressing [F5 (→Level/Pan)] will display the MIXER screen. The [F5 (→EQ)] and [F5 (→Level/Pan)] functions will alternate each time you press the button.

Parameter	Value	Explanation
EQ Sw	Off, On	Switches the status (On/Off) of equalizer.
EQ High	Gain [dB]	-15 - 0 - +15
	Freq [Hz]	1000, 1120, 1250, 1400, 1600, 1800, 2000, 2240, 2500, 2800, 3150 , 3550, 4000, 4500, 5000, 5600, 6300, 7100, 8000, 9000, 10k
EQ Mid	Gain [dB]	-15 - 0 - +15
	Freq [Hz]	100, 112, 125, 140, 160, 180, 200, 224, 250, 280, 315, 355, 400, 450, 500, 560, 630, 710, 800, 900, 1000 , 1120, 1250, 1400, 1600, 1800, 2000, 2240, 2500, 2800, 3150, 3550, 4000, 4500, 5000, 5600, 6300, 7100, 8000, 9000, 10k
	Q	0.5 , 0.6, 0.7, 0.8, 0.9, 1.0, 1.1, 1.2, 1.4, 1.6, 1.8, 2.0, 2.2, 2.5, 2.8, 3.1, 3.5, 4.0, 4.5, 5.0, 5.6, 6.3, 7.1, 8.0, 9.0, 10.0, 11.2, 12.5, 14.0, 16.0
EQ Low	Gain [dB]	-15 - 0 - +15
	Freq [Hz]	100 , 112, 125, 140, 160, 180, 200, 224, 250, 280, 315, 355, 400, 450, 500, 560, 630, 710, 800, 900, 1000

5. Use the VALUE dial or  /  to adjust.

The value of the selected parameter will change.

Added Functionality in Import

Auditioning or previewing before you import

You can audition a Patch before actually loading and using it.

Let's try auditioning a pre-installed Patch before actually loading it for use.

Types of Patches that can be auditioned/previewed

- MV-8000 Patches (File extension “.MV0”)
- Roland S-7x0 series Patches
- AKAI MPC2000/2000XL series program (File extension “.PGM”)
- AKAI S1000/S3000 series program (File extension “.A1P”, “.A3P”)

1. Insert the disk (floppy disk or CD-ROM) containing the Patch data you want to import into the drive.

2. Press  .

The IMPORT screen will appear.

3. Press  (Select Drive).

The SELECT DRIVE popup will appear.

4. Use  to select disk containing the Patch data you want to import,

and press  (Select).

The contents of the disk will be displayed.

5. Use  to select the Patch data you want to import.

6. Press  (Preview).

The IMPORT PREVIEW popup will appear.

The screen will indicate “Reading patch for preview...” and loading will begin.

When all the data has been loaded, the IMPORT PREVIEW popup window will show the name of the Patch that was loaded.



MEMO

MV-8000 Patches (filename extension “.MV0”) can also be auditioned/previewed from the LOAD PATCH screen.


MEMO

Depending on the Patch being loaded, it may take some time until you can preview or audition the Patch.

MEMO

Only the Patch that is highlighted in step 5 can be auditioned/previewed/imported on the IMPORT PREVIEW popup.

7. Strike  to audition the Patch.

8. If you decided to import the Patch, press  (Import). If you're finished auditioning/previewing, press  (Stop).

When you press [F5 (Import)], the ASSIGN TO PART/LIBRARY popup window will appear. Specify the parameter "Part" and "Library," then press [F5 (Execute)].

If the display indicates "Wave memory is not enough to preview."

The MV-8000's wave memory is not enough. No further audio data can be auditioned or previewed, and therefore this Patch data could not be auditioned or previewed.

MEMO

You can change the range of key (partial) if you switch the pad bank

MEMO

You can audition the sound from the connected external MIDI keyboard.

