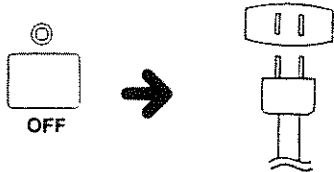


Let's play
Piano Plus
HP-30

 **Roland**

First of all

- 1 Make sure that the Power switch is off, then plug the cord into the wall outlet.



- 2 Connect the Pedal Switch to the jack on the rear panel of the HP-30.



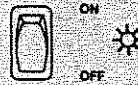
- 3 Set the Volume to '0'.



Let's Play the HP-30.

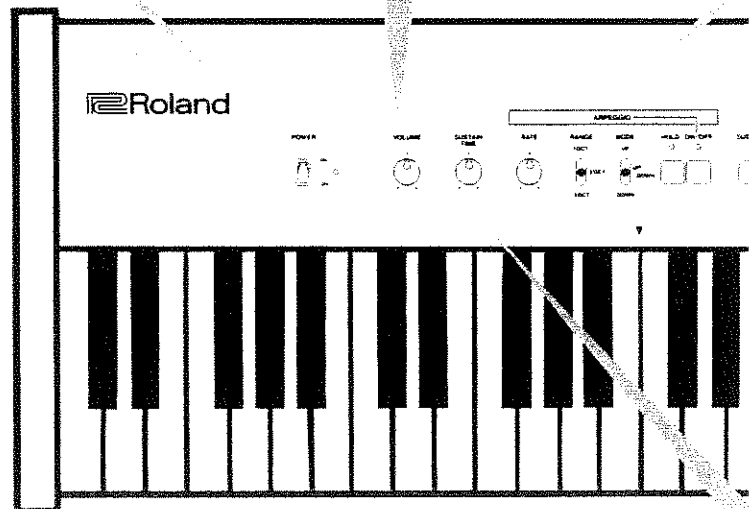
- 1 Turn the Power switch on.

POWER



- 2 Set the Volume to '5'.

VOLUME



- 3 Now, begin to play!

- ♪ You can play up to 8 notes at the same time.
- ♪ Adjust the volume by using the Volume control knob.

VOLUME



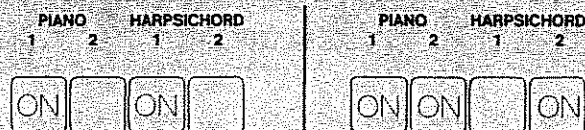
Lower Higher

HP-30

4 What's your favorite tone color? TONE SELECTORS

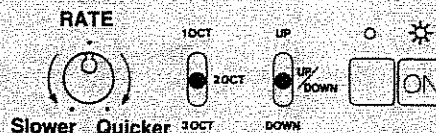
There are 4 types of tone colors:
PIANO 1, 2, HARPSICHORD 1, 2.

You can combine one tone color with the others.



* Press the buttons you select at the same time.

6 Play with a soft touch ARPEGGIO

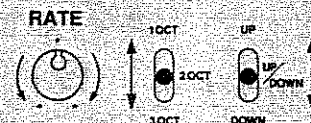


Play a chord within the lower 2 octaves.

* Press each note of the chord at the precisely same time.

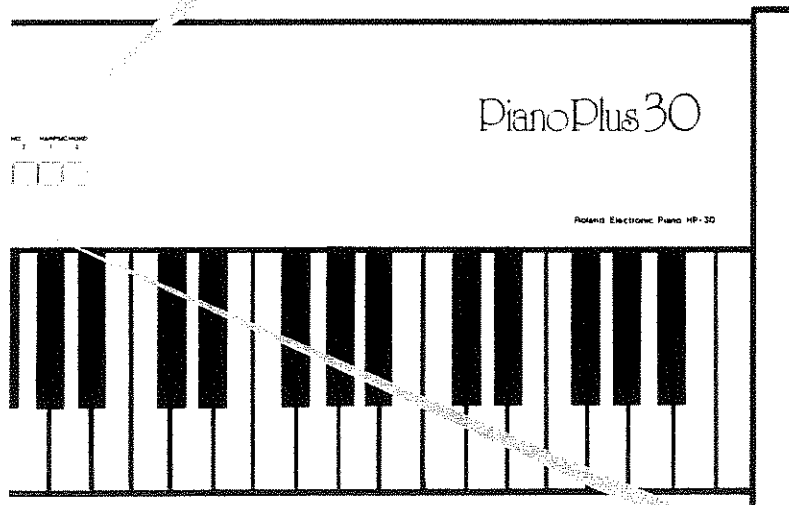
* Do not start playing before turning the ARPEGGIO switch on.

The wide variation of the Arpeggio patterns.



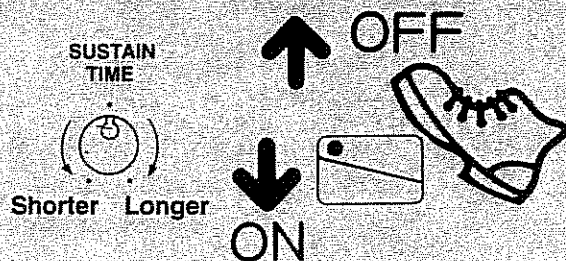
* If you step on the Pedal Switch after pressing a chord, the Arpeggio continues playing even after you release the keys.

Refer to the next page.



5 Enjoy playing with natural expressions SUSTAIN

Play a slow ballad with a long sustain.

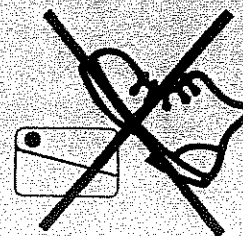


* Adjust the knob depending on the music you play.

7 Use this switch when the Pedal Switch is not being connected.

A sustain effect is obtained just like by pressing the Pedal Switch.

The Pedal Switch does not function when this switch is on.

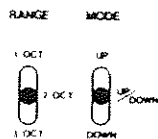


How to use the Arpeggio function.






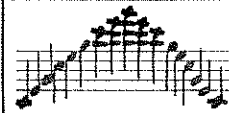



● An Arpeggio is played one octave higher than the actual key.

● You can enjoy wide variations of the Arpeggio patterns.

● Arpeggio Patterns as a result of 

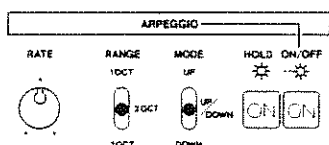


Combination →

RANGE \ MODE	1 oct	2 oct	3 oct
UP			
UP/DOWN			
DOWN			

※The patterns differ depending on the number of the notes in the chord. Please refer to 'ARPEGGIO SAMPLES'.

● Press the HOLD switch, and it will be turned on.



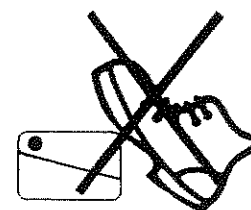
Press a certain chords, then release the keys.



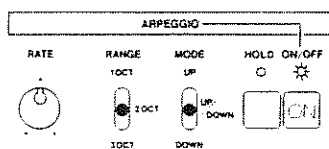
* When the HOLD switch is on, the Pedal Switch does not function whether it is on or off, as long as the SUSTAIN switch is turned off.

● An Arpeggio will be repeated until the new key are pressed.

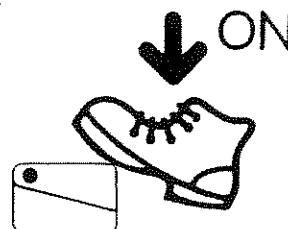
● If you wish to change chords, release all the keys you have been pressing and play a new chord.



● The HOLD function by using the Pedal Switch.



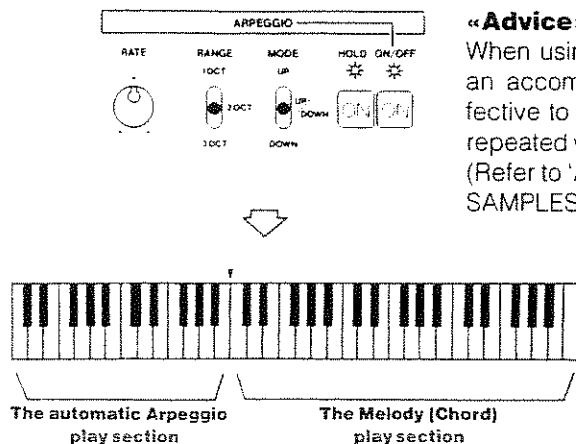
- Turn the HOLD switch off.
- Play a chord.



● Release the Keys

- An Arpeggio will be repeated as long as the pedal is pressed. (This function applies only to the Arpeggio play section.)
- A sustain effect can be obtained while the pedal is pressed. (This function applies only to the Melody play section.)

●Playing a melody with the accompaniment of the automatic Arpeggio play.



«Advice»

When using an Arpeggio as an accompaniment, it is effective to have the Arpeggio repeated within one measure. (Refer to 'ARPEGGIO SAMPLES')

●CAUTIONS

- Never fail to turn the Arpeggio ON/OFF switch on before pressing any key, or the Arpeggio might stop.
- * Follow these instructions when it stops.
1. Take your fingers off the keys.
 2. Press the ON/OFF switch. (OFF)
 3. Press it again. (ON)
 4. Press the keys again.

⚡ The volume of the automatic Arpeggio should be set a little lower to match the melody play.

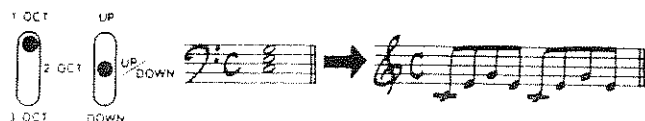
Arpeggio Samples

When using an Arpeggio as an accompaniment, adopt a pattern that is completed within one measure. Select the appropriate range and

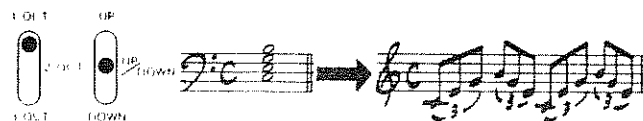
mode according to the number of notes in the chord, and beats in the bar.

⚡ The sample scores show examples of when you press each note of the chord simultaneously. If there is a time gap in pressing each note, the scores would be different.

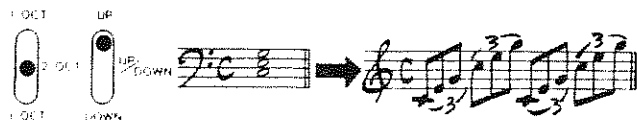
1 Three note Arpeggio (1 oct, UP/DOWN)



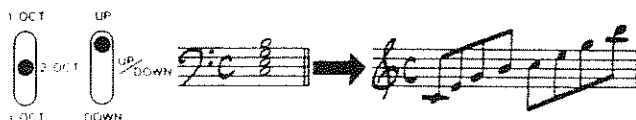
4 Four note Arpeggio (1 oct, UP/DOWN)



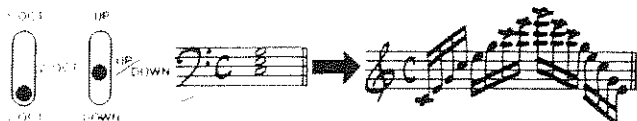
2 Three note Arpeggio (2oct, UP)



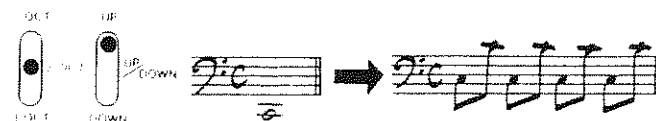
5 Four note Arpeggio (2oct, UP)



3 Three note Arpeggio (3oct, UP/DOWN)



6 Special use of Arpeggio (Bass pattern)



Location

- Keep this unit as far away as possible from fluorescent lamps, neon lights and transformers.

- Avoid using this unit in the place of dust, heat or humidity.

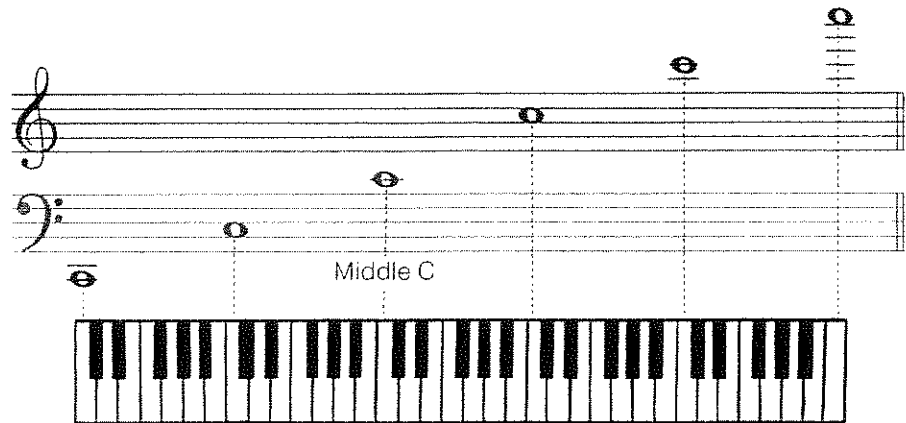
Cleaning

- Clean the control panel with neutral detergent, then wipe it with a dry, soft cloth.

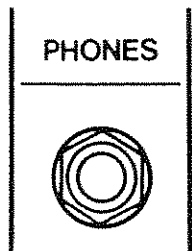
- Clean the wooden parts with a dry, soft cloth.

- Do not use solvents such as paint thinner.

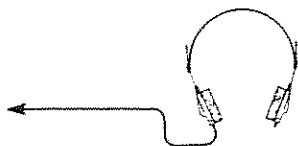
Diagram of Sound Compass



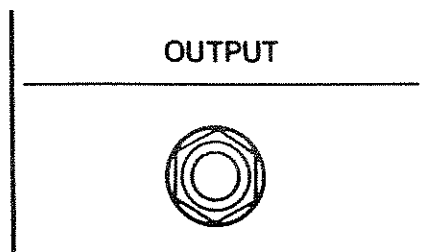
Rear Panel



Headphone jack



- * Stereo headphones can be connected to.
- * Control the volume with the Volume adjust knob.
- * Connecting the headphones will automatically cut off the sound from the built-in speakers.



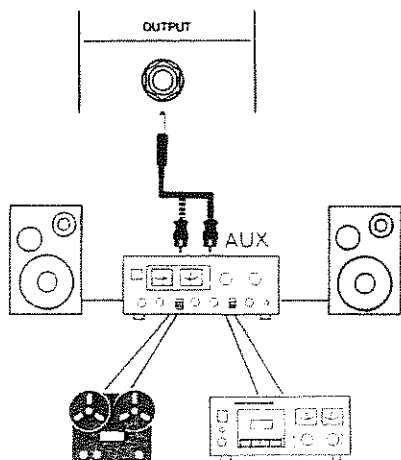
Output jack

Keyboard amplifier
Audio amplifier
P.A., Mixer
Recording unit

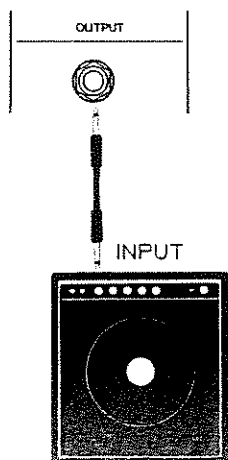
- * Connecting the cord automatically cuts off the sound from the built-in speakers.
- * Adjust the volume of the HP-30 according to the connected unit.

Setting-up

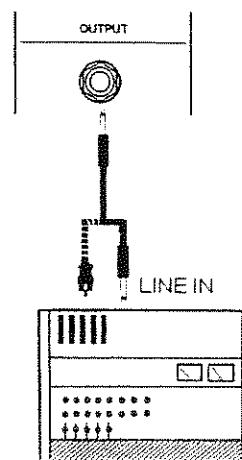
Audio amplifier



Keyboard amplifier or Guitar amplifier



P.A., Mixer



Tuning

- * This piano is tuned at A = 442 Hz, but adjust the TUNE adjuster on the rear panel if you need to change the pitches to play with other instrument in tune

TUNE



Specifications

- **Keyboard (61 keys, 5 octaves)**
- **Tone Selectors**
PIANO 1
PIANO 2
HARPSICHORD 1
HARPSICHORD 2
- **ARPEGGIO**
RATE
RANGE (1 oct, 2 oct, 3 oct)
MODE (UP, UP/DOWN, DOWN)
ON/OFF
HOLD

- **SUSTAIN**
SUSTAIN (ON, OFF)
SUSTAIN TIME
- **VOLUME**
- **TUNE**
- **POWER switch**
- **SPEAKERS (12 × 8 cm 2W)**
- **REAR PANEL**
Output jack
Headphone jack
Sustain pedal jack
TUNE

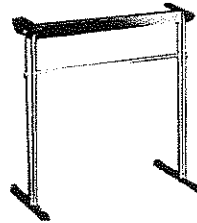
- **Consumption** 15 W
 - **Dimensions**
880(W) × 295(D) × 117(H)mm
34⁵/₈(W) × 11⁵/₈(D) × 4⁵/₈(H) in
 - **Weight** 7.5kg 16lb 8oz
 - **Accessories**
Music rack
Pedal switch (DP-2)
Cover
- ‡ **Specifications are subject to change without notice.**

Options

● **Headphones** RH-10



● **Stand** KS-2



● **Soft-case** SC-60



 Roland®

10158

UPC 10158



10158

 Roland®