

M-AUDIO

MIDAIR 25/37

English



Quick Start Guide

Quick Installation - Windows XP / Mac OS X

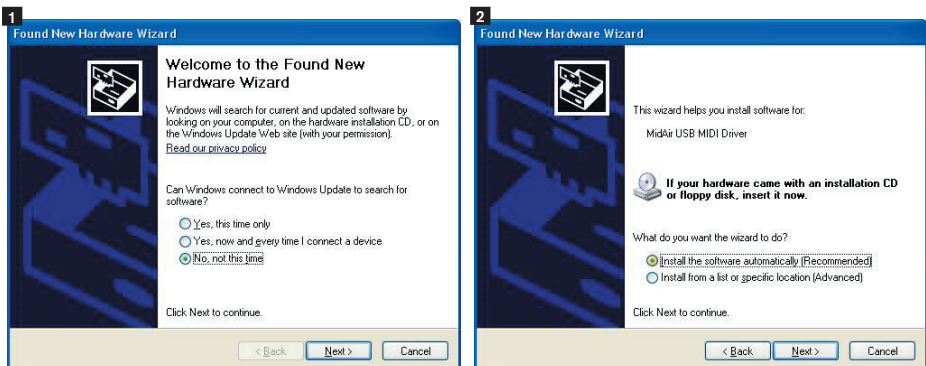
Your M-Audio MidAir 25/37 wireless MIDI controller is class-compliant. This means that if you are using Windows XP or Mac OS X, you can simply connect the MidAir receiver to your computer, power up the computer and keyboard controller, and you're ready to go—no drivers required.

However, we recommend that Windows users install M-Audio drivers when they intend to: (1) use MidAir 25/37 with more than one application at the same time, (2) use long SysEx (system exclusive) commands, or (3) simultaneously use other class-compliant USB devices with audio capabilities. These drivers can be downloaded from www.m-audio.com under the Support > Drivers page.

Installation Instructions for Windows XP (optional)

PLEASE NOTE: Make sure the MidAir receiver is disconnected from your computer when the M-Audio drivers are being installed. The following instructions will indicate when you should connect the receiver to your computer.

1. Download the latest Windows XP driver for MidAir 25/37 from www.m-audio.com under the Support > Drivers page.
2. Once the driver has finished downloading, double-click the file to run it.
3. Follow the driver installer's on-screen instructions.
4. At various points in this installation process, you may be notified that the driver being installed has not passed Windows Logo Testing. Click "Continue Anyway" to proceed with the installation.
5. Click "Finish" once the installer has completed the installation.
6. Connect your MidAir receiver to an available USB port using the supplied cable.
7. Windows will identify the receiver and will ask if you want to search the Internet for a driver. Select "No, not this time" and press "Next" (**1**).
8. Windows will display a "Found New Hardware" Wizard (**2**).
9. Choose "Install software automatically" and click "Next."
10. Once the Wizard has completed, click "Finish."
11. Once the installation is complete, you will see a message pop up stating, "Your new hardware is installed and ready to use."



Linking the Keyboard and Receiver

Your MidAir keyboard and receiver are linked at the factory and should be ready to use right out of the box. In a small number of cases, the keyboard and the receiver may not automatically connect when both are powered on for the first time. If this happens, the Wireless Connection Status LED found on each of the two units will flash and eventually turn off.

To resolve this issue, simply press the wireless connect buttons on the receiver and the keyboard and allow the two units to connect wirelessly. Once a link is established, the Wireless Connect Status LEDs will stay illuminated, and you'll be ready to go.

Using MidAir in Host and Standalone Modes

Standalone Mode

When using the MidAir system in standalone mode (without a computer), you must make sure the receiver's Standalone Mode switch is set properly. The default setting "auto" works best for most purposes. However, you can manually configure the receiver to use only the physical MIDI input jack or only the wireless MIDI port by setting the Standalone Mode switch accordingly.

Refer to the User Manual found on the MidAir Series CD-ROM for more information about using MidAir in standalone mode.

Host Mode

When operating your MidAir system in host mode (with a computer), you'll need to configure your audio software to receive MIDI data from the MidAir receiver. Your software will detect two MidAir MIDI input ports:

- The first port is the wireless MIDI input. Select this input to receive MIDI data from your MidAir keyboard.
- The second port is the wired 5-pin MIDI input. Select this input to receive data from any MIDI device that is connected to the receiver's 5-pin MIDI input.

Note that in host mode, the Standalone Mode switch does not affect the MidAir receiver's operation in any way (the switch is only active in standalone mode). For more detailed information about computer-based operation, refer to the User Manual found on the MidAir Series CD-ROM.

Additional Information and Support

The M-Audio website (www.m-audio.com) contains the latest drivers as well as useful links to news stories, FAQs, and technical support. We recommend checking this site regularly to ensure you have the latest drivers and most up-to-date information about your M-Audio products.

© 2006 Avid Technology, Inc. All rights reserved. Product features, specifications, system requirements and availability are subject to change without notice. Avid, M-Audio and MidAir 25/37 are either trademarks or registered trademarks of Avid Technology, Inc. All other trademarks contained herein are the property of their respective owners.

M-Audio USA 5795 Martin Rd., Irwindale, CA 91706	
Technical Support	
web:	www.m-audio.com/tech
tel (pro products):	(626) 633-9055
tel (consumer products):	(626) 633-9066
fax (shipping):	(626) 633-9032
Sales	
e-mail:	sales@m-audio.com
tel:	1-866-657-6434
fax:	(626) 633-9070
Web	www.m-audio.com

M-Audio U.K. Floor 6, Gresham House, 53 Clarendon Road, Watford WD17 1LA, United Kingdom	
Technical Support	
e-mail:	support@maudio.co.uk
tel:(Mac support):	+44 (0)1765 650072
tel:(PC support):	+44 (0)1309 671301
Sales	
tel:	+44 (0)1923 204010
fax:	+44 (0)1923 204039
Web	www.maudio.co.uk

M-Audio France Floor 6, Gresham House, 53 Clarendon Road, Watford WD17 1LA, United Kingdom	
Renseignements Commerciaux	
tel :	0 810 001 105
e-mail :	info@m-audio.fr
Assistance Technique	
PC :	0 820 000 731
MAC :	0 820 391 191
Assistance Technique	
e-mail :	support@m-audio.fr mac@m-audio.fr
fax :	+33 (0)01 72 72 90 52
Site Web	www.m-audio.fr

M-Audio Germany Kuhallmand 34, D-74613 Ohringen, Germany	
Technical Support	
e-mail:	support@m-audio.de
tel:	+49 (0)7941 - 9870030
fax:	+49 (0)7941 98 70070
Sales	
e-mail:	info@m-audio.de
tel:	+49 (0)7941 98 7000
fax:	+49 (0)7941 98 70070
Web	www.m-audio.de

M-Audio Canada 1400 St-Jean Baptiste Ave. #150, Quebec City, Quebec G2E 5B7, Canada	
Technical Support	
email:	techcanada@m-audio.com
phone:	(418) 872-0444
fax:	(418) 872-0034
Sales	
e-mail:	infocanada@m-audio.com
phone:	(866) 872-0444
fax:	(418) 872-0034
Web	www.m-audio.ca

M-Audio Japan アビッドテクノロジー株式会社 エムオーディオ事業部 〒460-0002 愛知県名古屋市中区丸の内 2-18-10 Avid Technology K.K. 2-18-10 Marunouchi, Naka-Ku, Nagoya, Japan 460-0002	
カスタマーサポート (Technical Support)	
e-mail :	win-support@m-audio.jp
e-mail(Macintosh 環境専用) :	mac-support@m-audio.jp
tel :	052-218-0859 (10:00~12:00/13:00~17:00)
セールスに関するお問い合わせ (Sales)	
e-mail:	info@m-audio.jp
tel:	052-218-3375
fax:	052-218-0875
Web	www.m-audio.jp