

**POWER**

The Fat Sandwich Distortion can be powered by a single 9V battery or with a Dunlop ECB-003 external DC power supply. The power input is a 5.5mm x 2.1mm jack with the positive voltage on the outer sleeve. Using an external power supply will disconnect the battery. Disconnect the input jack to preserve battery life when not in use. The pedal will lock into bypass mode when it is time to change the battery. It also includes power protection circuitry to prevent damage from AC power supplies.

**SPECIFICATIONS**

- INPUT IMPEDANCE.....> 15kΩ
- OUTPUT IMPEDANCE.....< 25kΩ
- SIGNAL TO NOISE RATIO
- (all controls at MID position).....> 74dBV 'A' Weighted
- BYPASS.....True Bypass
- DIMENSIONS...4-25/32" x 3-3/4" x 1-3/4"
- WEIGHT.....14oz.
- CURRENT DRAW.....8.7mA (9V DC)
- POWER SUPPLY.....Standard 9V battery, Dunlop ECB-03 AC Adapter, Dunlop DC Brick, or CAE MC-403.
- \*0dBV = 1Vrms

Features: heavy-duty footswitch with quiet relay-based true bypass, blue LED indicator, 5.5mm x 2.1mm power jack with AC protection, easy access non-detachable battery door, super-duty 0.09" aluminum anodized chassis, high grade components, great tone and cool name.



LIVE TO PLAY LIVE®

JIMDUNLOP.COM wayhuge.com

DUNLOP MANUFACTURING, INC. P.O. BOX 846 BENICIA, CA 94510 U.S.A.  
TEL: 1-707-745-2722 FAX: 1-707-745-2658 WWW.JIMDUNLOP.COM

© 2008 DUNLOP MFG. INC.

92503006785



**FAT SANDWICH™**

**WAY HUGE**  
ELECTRONICS

WHE-301

**Fat Sandwich**  
instruction manual

**Way Huge Electronics: bringing a new age of sweltering saturation to the people...**

The Fat Sandwich is versatile and over-the-top. The consummate distortion pedal for any genre or playing style.

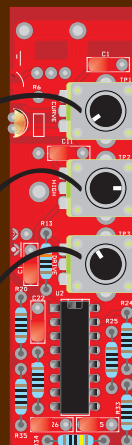
Designed to be used with an amp set clean, the Fat Sandwich delivers heaps of crunchy distortion goodness via its innovative multi-stage clipping circuit. Meticulously designed from the ground up, the passive tone stack was tuned to bring out the "sweet spot" with any guitar and amp combination. The VOLUME control produces tons of output, while the DRIVE knob goes from mild crunch to full tilt saturation. Additionally, the Fat Sandwich has three internal mini controls for fine-tuning the pedal to your guitar rig.

FAT SANDWICH INTERIOR DRAWING: (RIGHT)  
(UNSCREW THE 4 RUBBER FEET TO ADJUST THE INTERNAL TONE CONTROLS)

**CURVE** — FOR FINE-TUNING CORNER FREQUENCIES OF THE 1ST STAGE OF DISTORTION

**HIGHS** — TWEAKS THE HIGH END BETWEEN THE 2 DRIVE STAGES

**DRIVE** — ADJUSTS THE GAIN OF THE 2ND STAGE OF DISTORTION



**VOLUME** — PRODUCES TONS OF OUTPUT

**TONE** — ADJUSTS THE TONAL MIXTURE IN TANDEM WITH THE PRES & RESO CONTROLS

**DISTORTION** — DELIVERS HEAPS OF CRUNCHY DISTORTION GOODNESS

**PRESENCE** — VARIES THE HIGH FREQUENCY RESPONSE

**FOOTSWITCH** — TOGGLES THE EFFECT ON / BYPASS (BLUE LED INDICATES EFFECT IS ON)

**RESONANCE** — MANIPULATES THE LOW FREQUENCIES

