

**POWER**

The Pork Loin can be powered by a single 9V battery or with a Dunlop ECB-003 external DC power supply. The power input is a 5.5mm x 2.1mm jack with the positive voltage on the outer sleeve. Using an external power supply will disconnect the battery. Disconnect the input jack to preserve battery life when not in use. The pedal will lock into bypass mode when it is time to change the battery. It also includes power protection circuitry to prevent damage from AC power supplies.

**SPECIFICATIONS**

INPUT IMPEDANCE.....> 1MΩ

OUTPUT IMPEDANCE.....< 25kΩ

**SIGNAL TO NOISE RATIO**

(all controls at MID position).....> 90dBV 'A' Weighted

BYPASS.....True Bypass

DIMENSIONS...4-25/32" x 3-3/4" x 1-3/4"

WEIGHT.....14oz.

CURRENT DRAW.....16.5mA (9V DC)

POWER SUPPLY.....Standard 9V battery,  
Dunlop ECB-03 AC Adapter, Dunlop DC Brick,  
or CAE MC-403.

\*0dBV = 1Vrms

Features: heavy-duty footswitch with quiet relay-based true bypass, blue LED indicator, 5.5mm x 2.1mm power jack with AC protection, easy access non-detachable battery door, super-duty 0.09" aluminum anodized chassis, high grade components, great tone and cool name.



LIVE TO PLAY LIVE®

JIMDUNLOP.COM wayhuge.com

DUNLOP MANUFACTURING, INC. P.O. BOX 846 BENICIA, CA 94510 U.S.A.  
TEL: 1-707-745-2722 FAX: 1-707-745-2658 WWW.JIMDUNLOP.COM

© 2008 DUNLOP MFG. INC.

92503006784



**pork  
loin™**

**WAY HUGE**  
ELECTRONICS

WHE-201

Pork Loin instruction  
manual

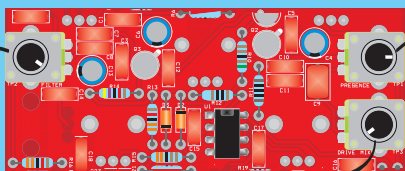
**With a wide range of dynamic tones from supple and clear to warm and punchy!**

The Pork Loin's amazing features and superior functionality distinguish it from the mass of clones on the market today!

The Pork Loin incorporates two distinct tonal pathways that are blended together—a modern soft clipping overdrive and a modified classic British preamp for clean. At the heart of the Pork Loin's overdrive path is a soft clipped BiFET gain stage with a low pass filter TONE control, rounded out by a CURVE function that gives the user freedom to fine-tune corner frequencies. The VOLUME control regulates the masses of pork power that exude from its space age circuitry, leaving room for the CLEAN control to blend in its warm glistening clean tones. Additionally, the Pork Loin has three internal mini controls for fine-tuning the pedal to your guitar rig.

**PORK LOIN INTERIOR DRAWING:**

(UNSCREW THE 4 RUBBER FEET TO ADJUST THE INTERNAL TONE CONTROLS)



**FILTER** -  
ADJUSTS THE  
CLEAN PREAMP  
TONAL SPECTRUM

**PRESENCE** -  
TWEAKS THE  
HIGH END ON  
THE OVERDRIVE

**DRIVE MIX** - CONTROLS THE MIX OF THE OVERDRIVE.  
TURN THIS ALL THE WAY DOWN TO GET ONLY CLEAN  
BRITISH PREAMP TONES WITH NO OVERDRIVE.

**VOLUME** - REGULATES THE  
MASSES OF PORK POWER  
THAT EXUDE FROM ITS  
SPACE AGE CIRCUITRY

**TONE** - LPF THAT ROLLS OFF  
HIGH END. SETTING IT FULL  
CLOCKWISE REMOVES IT  
FROM THE SIGNAL PATH.

**OVERDRIVE** -  
EMANATES SMOOTH SOFT  
CLIPPED OVERDRIVE  
WAVES



**CLEAN** -  
BLENDS IN WARM  
BRITISH PREAMP  
GLISTENING  
CLEAN TONES

**FOOTSWITCH** - TOGGLES THE  
EFFECT ON / BYPASS  
(BLUE LED INDICATES EFFECT IS ON)

**CURVE** - FOR FINE-TUNING  
CORNER FREQUENCIES OF  
THE OVERDRIVE